

5440 Naiman Parkway

Solon, OH 44139



FOR LEASE

[www.lee-associates.com](http://www.lee-associates.com)



FOR MORE INFORMATION  
PLEASE CONTACT:

**ABRAM SCHWARZ**

VICE PRESIDENT

216.282.2210

[aschwarz@lee-associates.com](mailto:aschwarz@lee-associates.com)

**JOSEPH GREENBERG**

PRESIDENT

216.401.6640

[jgreenberg@lee-associates.com](mailto:jgreenberg@lee-associates.com)

30100 Chagrin Blvd.  
Suite 120  
Cleveland, OH 44124

### BUILDING FEATURES:

- 48,690 SF Available Warehouse Space
- 223,857 SF Building
- 25'8" Clear
- 4 Docks, 5 Drive in Doors (1-10' x 14', 4 - 14' x 14')
- 29' x 34'6" Column Spacing
- 200 Amp - 277/480V 3 Phase
- Convenient Access to I-271, I-480, & Route 422
- Many nearby amenities, such as restaurants, gas stations, and the Shoppes of North Solon

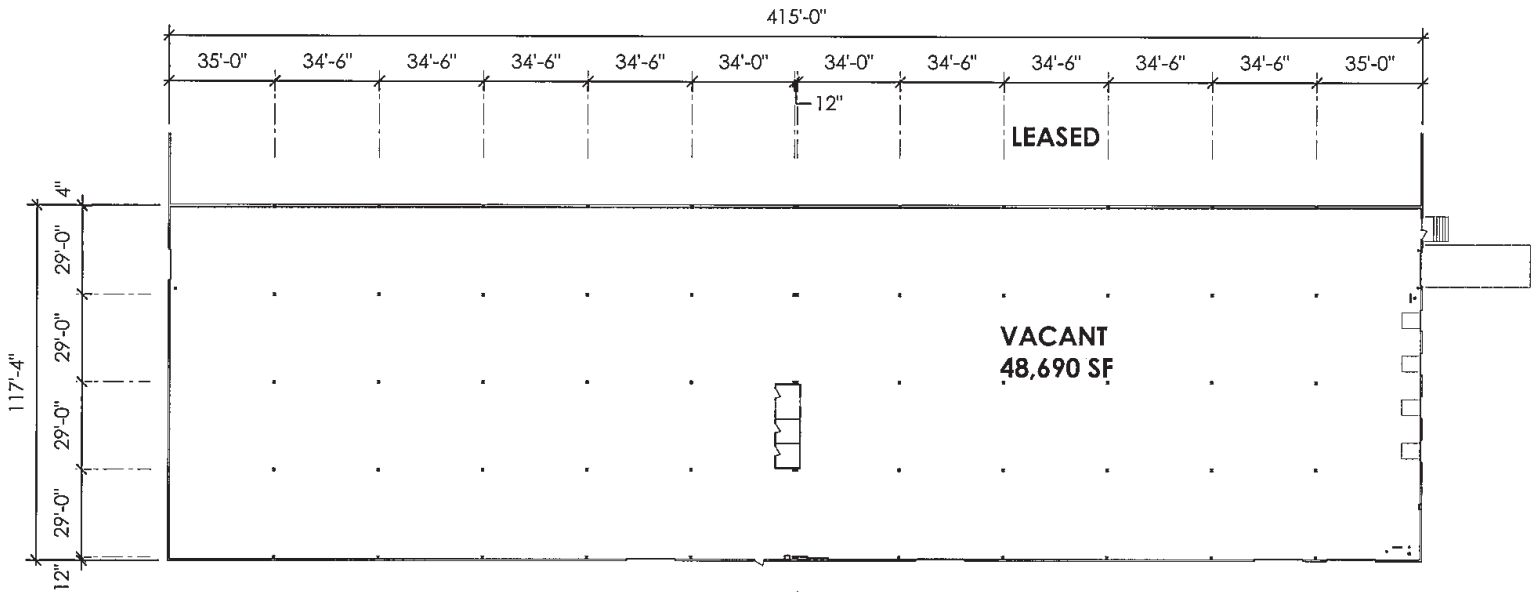
All information furnished regarding property for sale, rental or financing is from sources deemed reliable, but no warranty or representation is made to the accuracy thereof and same is submitted to errors, omissions, change of price, rental or other conditions prior to sale, lease or financing or withdrawal without notice. No liability of any kind is to be imposed on the broker herein.

# 5440 Naiman Parkway

Solon, OH 44139

## FOR LEASE

www.lee-associates.com



FLOOR PLAN  
1" = 50'-0"



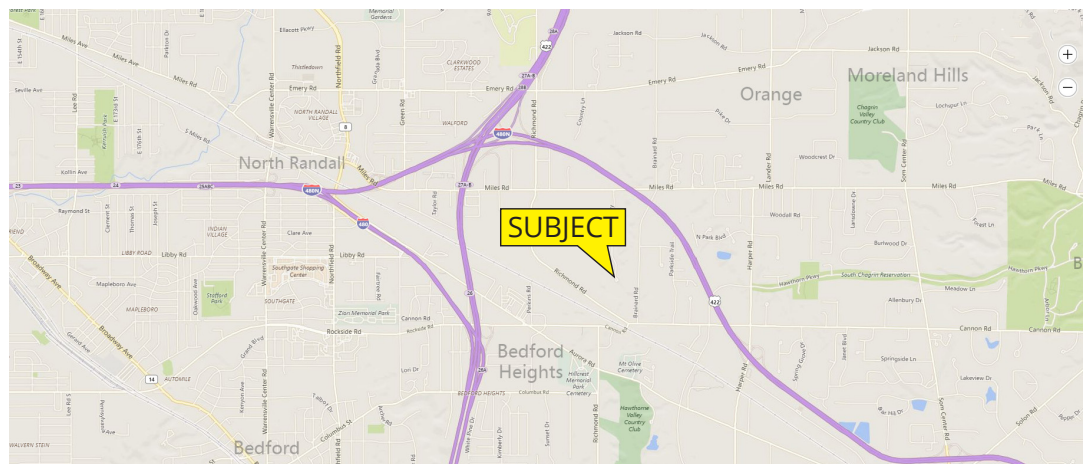
### 48,690 SF Available Warehouse Space

FOR MORE INFORMATION  
PLEASE CONTACT:

**ABRAM SCHWARZ**  
VICE PRESIDENT  
216.282.2210  
aschwarz@lee-associates.com

**JOSEPH GREENBERG**  
PRESIDENT  
216.401.6640  
jgreenberg@lee-associates.com

30100 Chagrin Blvd.  
Suite 120  
Cleveland, OH 44124



All information furnished regarding property for sale, rental or financing is from sources deemed reliable, but no warranty or representation is made to the accuracy thereof and same is submitted to errors, omissions, change of price, rental or other conditions prior to sale, lease or financing or withdrawal without notice. No liability of any kind is to be imposed on the broker herein.