

3900 AUTOMATION AVE.
AUBURN HILLS, MICHIGAN

HI-TECH FOR SALE OR LEASE
98,356 Square Feet Available Immediately



**SIGNATURE
ASSOCIATES**
KNOW SIGNATURE | KNOW RESULTS



PROPERTY FEATURES

- 98,356 square feet available
- 51,080 square feet of office
- 26' clear height
- (1) 12x14 grade level door, (2) truckwells
- Zoned Light Industrial
- 255 parking spaces
- 3,000 amps, 480 volts power
- State-of-the-art office floor system with heat, air-conditioning, and cable throughout floor
- Lease Rate: \$11.25/sq.ft. NNN
- Sale Price: \$11,250,000 (\$114.38/sq.ft.)



For more information, please contact:

JOHN BOYD
(248) 948 0102
jboyd@signatureassociates.com

GARY STEPHENS
(248) 948 0104
gstephens@signatureassociates.com

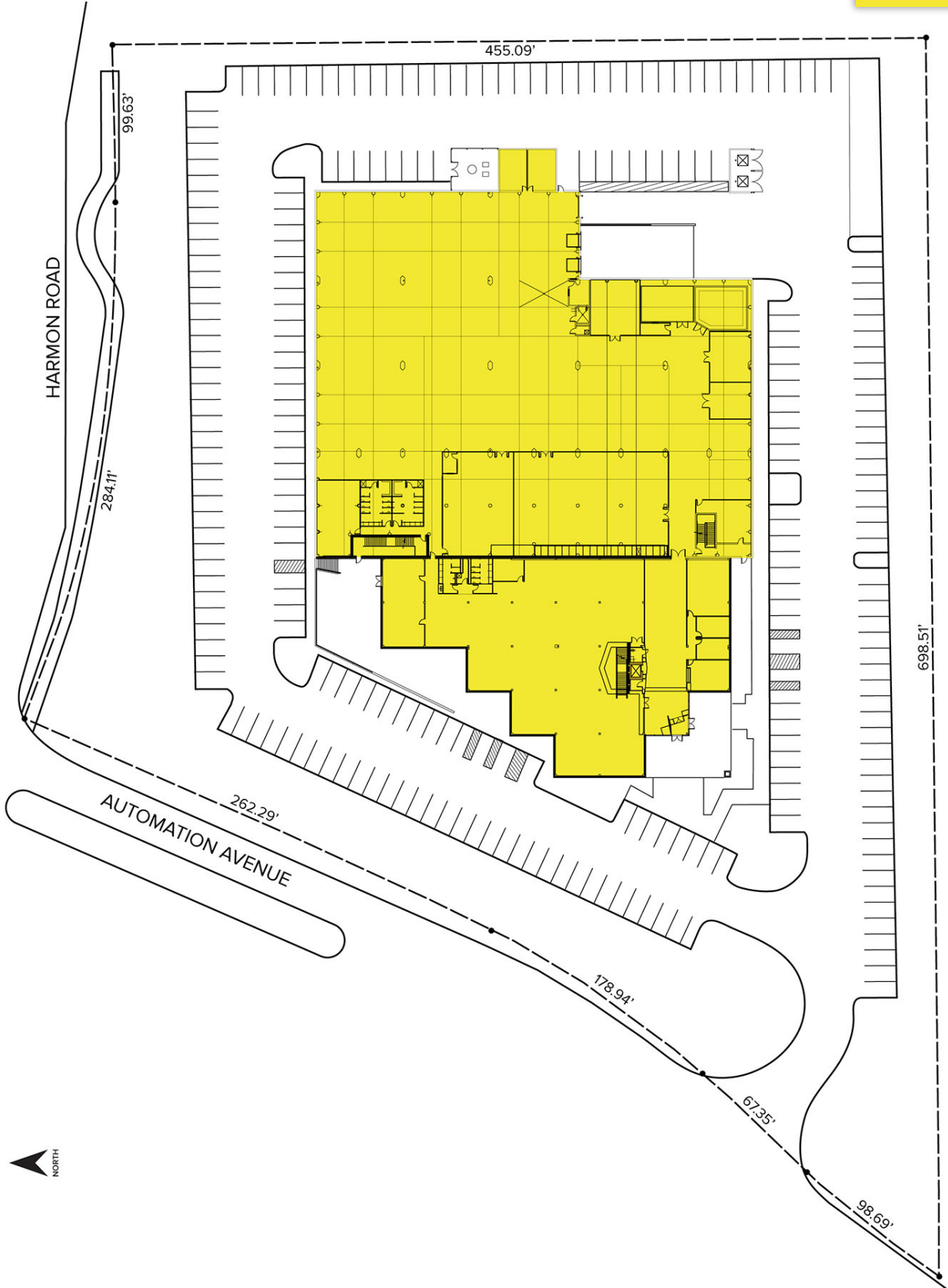
SIGNATURE ASSOCIATES
One Towne Square, Suite 1200
Southfield, MI 48076
www.signatureassociates.com

3900 Automation Avenue – Auburn Hills, Michigan

Hi-Tech For Sale or Lease

98,356
Square Feet
AVAILABLE

Site Plan



For more information, please contact:

JOHN BOYD
(248) 948 0102
jboyd@signatureassociates.com

GARY STEPHENS
(248) 948 0104
gstephens@signatureassociates.com

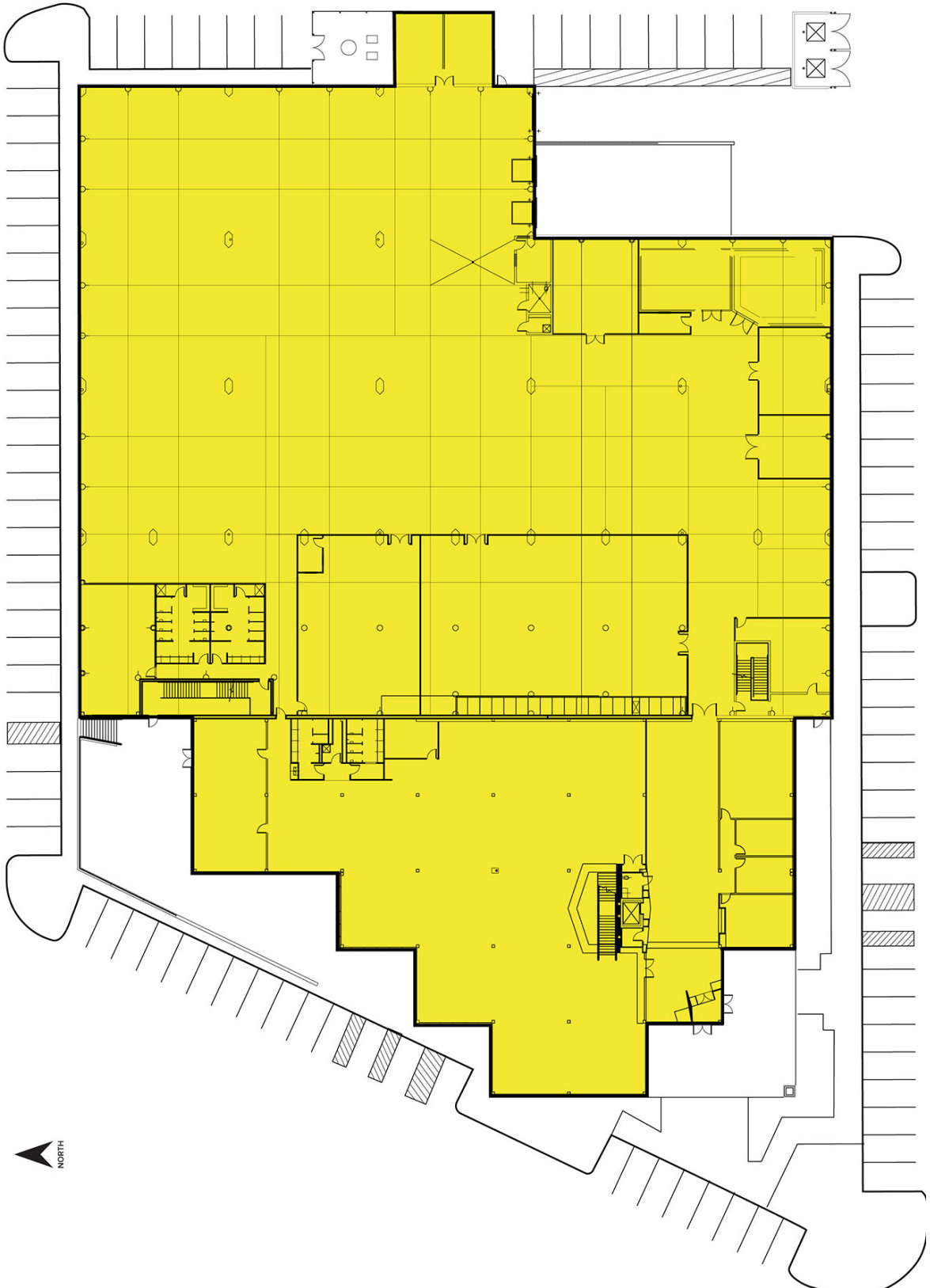
SIGNATURE ASSOCIATES
One Towne Square, Suite 1200
Southfield, MI 48076
www.signatureassociates.com

3900 Automation Avenue – Auburn Hills, Michigan

Hi-Tech For Sale or Lease

98,356
Square Feet
AVAILABLE

Site Plan



For more information, please contact:

JOHN BOYD
(248) 948 0102
jboyd@signatureassociates.com

GARY STEPHENS
(248) 948 0104
gstephens@signatureassociates.com

SIGNATURE ASSOCIATES
One Towne Square, Suite 1200
Southfield, MI 48076
www.signatureassociates.com

Information is subject to verification and no liability for errors or omissions is assumed. Price is subject to change and listing withdrawal.

3900 Automation Avenue – Auburn Hills, Michigan

Hi-Tech For Sale or Lease

98,356
Square Feet
AVAILABLE

Aerial



For more information, please contact:

JOHN BOYD
(248) 948 0102
jboyd@signatureassociates.com

GARY STEPHENS
(248) 948 0104
gstephens@signatureassociates.com

SIGNATURE ASSOCIATES
One Towne Square, Suite 1200
Southfield, MI 48076
www.signatureassociates.com