

LAKESHORE PLAZA

22800-22840 Lake Shore Blvd , Euclid , OH 44123-1321

RETAIL PROPERTY FOR LEASE



Noah Yoder
Senior Associate
614.285.6505
Noah@MEREIG.com

Ben Collier
Senior Vice President
614.285.6505
Ben@MEREIG.com

4300 E Broad St, Suite A
Columbus, OH 43213
614.285.6505
mereig.rent



PROPERTY SUMMARY

LAKESHORE PLAZA | 22800-22840 LAKE SHORE BLVD , EUCLID , OH 44123-1321



VIDEO

PROPERTY DESCRIPTION

Lakeshore Plaza is a vibrant and bustling shopping center nestled in the heart of Euclid, Ohio. This premier retail destination features a diverse mix of local and national tenants, offering visitors a unique shopping experience. Located just minutes from the scenic shores of Lake Erie and Euclid's historic downtown, Lakeshore Plaza benefits from its proximity to major highways and public transportation, providing easy access for both local residents and tourists alike.

The shopping center boasts ample parking, ensuring convenience for your customers, while the beautifully landscaped grounds and inviting atmosphere create an enjoyable environment for shoppers to explore. With a wide variety of businesses, including popular eateries, boutique shops, and essential services, Lakeshore Plaza caters to the diverse needs of the thriving Euclid community.

OFFERING SUMMARY

Lease Rate:	\$7.50 - 15.00 SF/yr (NNN)
Number of Units:	30
Available SF:	1,081 - 9,980 SF
Building Size:	85,319 SF

DEMOGRAPHICS

	1 MILE	3 MILES	5 MILES
Total Households	7,477	33,625	73,805
Total Population	13,359	64,040	138,298
Average HH Income	\$46,178	\$49,662	\$51,527

Noah Yoder
Senior Associate
614.285.6505
Noah@MEREIG.com

Ben Collier
Senior Vice President
614.285.6505
Ben@MEREIG.com

4300 E Broad St, Suite A
Columbus, OH 43213
614.285.6505
mereig.rent



PLANS

LAKESHORE PLAZA | 22800-22840 LAKE SHORE BLVD , EUCLID , OH 44123-1321



LEGEND

- Available
- Available Soon
- Unavailable

AVAILABLE SPACES

SUITE	TENANT	SIZE	TYPE
■ Suite #22804 (Metro Back)	-	2,425 SF	NNN
■ Suite 199	Available Soon	1,616 SF	NNN
■ Suite 203	Available	4,424 SF	NNN
■ 205A (Upstairs Office)	Available	2,000 SF	NNN
■ Suite 205B (Upstairs Office)	Available	1,081 SF	NNN
■ Suite 201	Available	3,800 SF	NNN

Noah Yoder
Senior Associate
614.285.6505
Noah@MEREIG.com

Ben Collier
Senior Vice President
614.285.6505
Ben@MEREIG.com

4300 E Broad St, Suite A
Columbus, OH 43213
614.285.6505
mereig.rent



PLANS

LAKESHORE PLAZA | 22800-22840 LAKE SHORE BLVD , EUCLID , OH 44123-1321

	SUITE	TENANT	SIZE	TYPE
■	Suite 22810	Available	3,425 SF	NNN
■	Suite 22824	Available Soon	9,980 SF	NNN

Noah Yoder
Senior Associate
614.285.6505
Noah@MEREIG.com

Ben Collier
Senior Vice President
614.285.6505
Ben@MEREIG.com

4300 E Broad St, Suite A
Columbus, OH 43213
614.285.6505
mereig.rent



RETAILER MAP

LAKESHORE PLAZA | 22800-22840 LAKE SHORE BLVD , EUCLID , OH 44123-1321



Noah Yoder
Senior Associate
614.285.6505
Noah@MEREIG.com

Ben Collier
Senior Vice President
614.285.6505
Ben@MEREIG.com

4300 E Broad St, Suite A
Columbus, OH 43213
614.285.6505
mereig.rent



SUITE 201

LAKESHORE PLAZA | 22800-22840 LAKE SHORE BLVD , EUCLID , OH 44123-1321



SUITE 201: 3,800 SQ. FT.

Grocery anchored End-cap with 6 garage doors and ample parking. Ideal for auto users, food users, and light retail.



Noah Yoder
Senior Associate
614.285.6505
Noah@MEREIG.com

Ben Collier
Senior Vice President
614.285.6505
Ben@MEREIG.com

4300 E Broad St, Suite A
Columbus, OH 43213
614.285.6505
mereig.rent



SUITE 203

LAKESHORE SHOPPING CENTER | 22800-22840 LAKE SHORE BLVD , EUCLID , OH 44123-1321



SUITE 203: 4,424 SQ. FT.

Exceptional retail space in the bustling Lake Shore Shopping Center located in the expanding Lake Shore community. With a spacious 4,424 sqft, this unit offers an ideal location for a wide range of businesses looking to benefit from the diverse tenant mix and the surrounding neighborhood.

Highlights include:

- Grocery Anchored Plaza
- Street visibility
- Exceptional Parking
- Open layout



Noah Yoder
Senior Associate
614.285.6505
Noah@MEREIG.com

Ben Collier
Senior Vice President
614.285.6505
Ben@MEREIG.com

4300 E Broad St, Suite A
Columbus, OH 43213
614.285.6505
mereig.rent



SUITE 199

LAKESHORE PLAZA | 22800-22840 LAKE SHORE BLVD , EUCLID , OH 44123-1321



SUITE 199: 1,616 SQ. FT.

Fantastic retail space featuring dual customer restrooms for enhanced convenience. Take advantage of dedicated parking, ensuring easy accessibility for your clientele. This space is nestled on a bustling sidewalk, this prime location benefits from an abundance of foot traffic, driving visibility and customer engagement. Enjoy the added perk of shared storage space to maximize your business efficiency. Ideally suited for businesses seeking both functionality and prime visibility.



Noah Yoder
Senior Associate
614.285.6505
Noah@MEREIG.com

Ben Collier
Senior Vice President
614.285.6505
Ben@MEREIG.com

4300 E Broad St, Suite A
Columbus, OH 43213
614.285.6505
mereig.rent



SUITE 205B

LAKESHORE SHOPPING CENTER | 22800-22840 LAKE SHORE BLVD , EUCLID , OH 44123-1321



SUITE 205B: 1,108 SQ. FT.

This vacant office space with a shared entrance and stairwell with suite 205A is a must-see. This space has windows and natural light, a roughed-in bathroom, and storage space. It is clean and ready for a business that wants to be in a great location and close to local businesses.

Highlights include:

- Grocery Anchored Plaza
- Street visibility
- Exceptional Parking
- Open layout



Noah Yoder
Senior Associate
614.285.6505
Noah@MEREIG.com

Ben Collier
Senior Vice President
614.285.6505
Ben@MEREIG.com

4300 E Broad St, Suite A
Columbus, OH 43213
614.285.6505
mereig.rent



SUITE 22824

LAKESHORE PLAZA | 22800-22840 LAKE SHORE BLVD , EUCLID , OH 44123-1321



SUITE 22824: 9,980 SQ. FT

In-line junior anchor space with high street visibility, tons of frontage, parking, and windows.



Noah Yoder
Senior Associate
614.285.6505
Noah@MEREIG.com

Ben Collier
Senior Vice President
614.285.6505
Ben@MEREIG.com

4300 E Broad St, Suite A
Columbus, OH 43213
614.285.6505
mereig.rent



SUITE 22810

LAKESHORE SHOPPING CENTER | 22800-22840 LAKE SHORE BLVD , EUCLID , OH 44123-1321

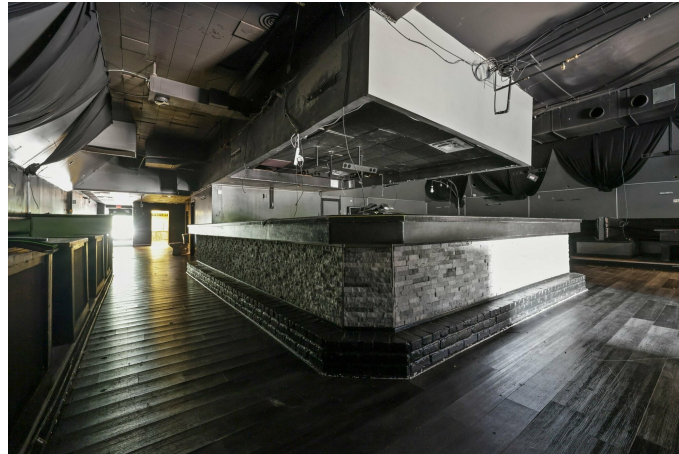
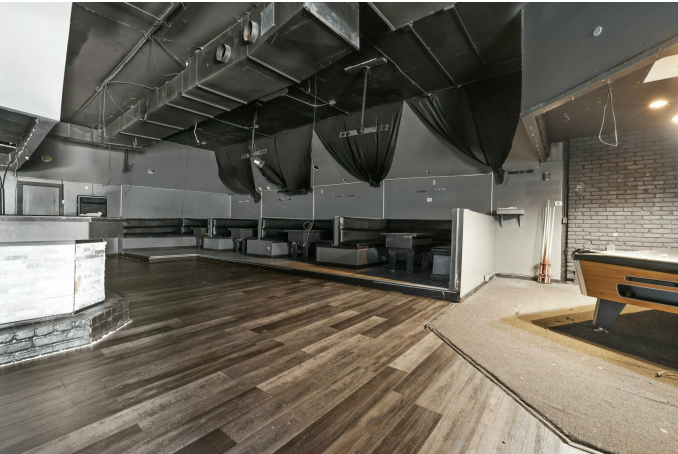


SUITE 22810: 3,425 SQ. FT.

Inline space with great visibility. Neighboring the tenants with the most foot traffic in the center. Would make a great restaurant space

Highlights include:

- Grocery Anchored Plaza
- Street visibility
- Exceptional Parking
- Open layout



Noah Yoder
Senior Associate
614.285.6505
Noah@MEREIG.com

Ben Collier
Senior Vice President
614.285.6505
Ben@MEREIG.com

4300 E Broad St, Suite A
Columbus, OH 43213
614.285.6505
mereig.rent



ADDITIONAL PHOTOS

LAKE SHORE PLAZA | 22800-22840 LAKE SHORE BLVD , EUCLID , OH 44123-1321



Noah Yoder
Senior Associate
614.285.6505
Noah@MEREIG.com

Ben Collier
Senior Vice President
614.285.6505
Ben@MEREIG.com

4300 E Broad St, Suite A
Columbus, OH 43213
614.285.6505
mereig.rent



DEMOGRAPHICS MAP & REPORT

LAKESHORE PLAZA | 22800-22840 LAKE SHORE BLVD , EUCLID , OH 44123-1321

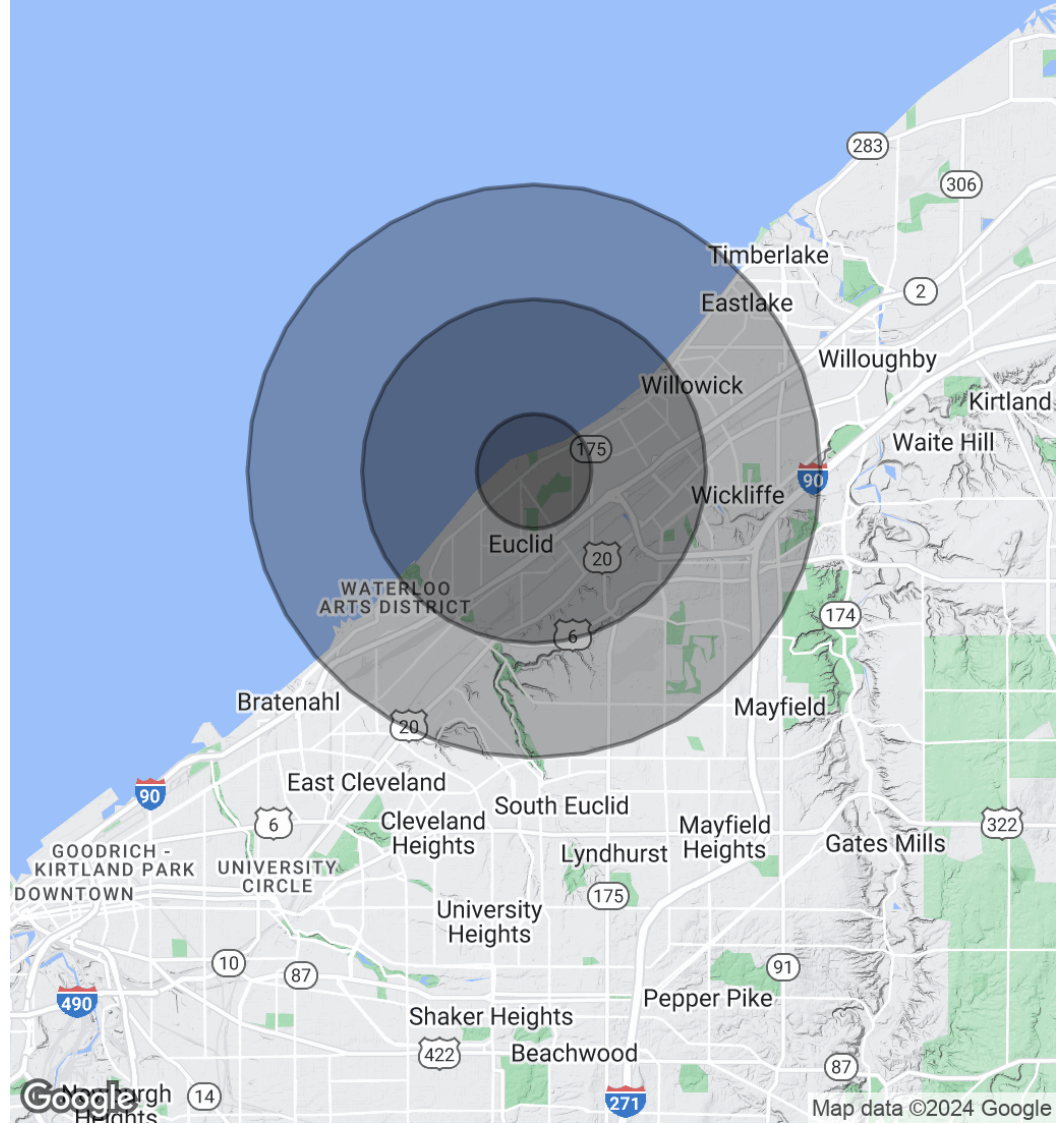
POPULATION

	1 MILE	3 MILES	5 MILES
Total Population	13,359	64,040	138,298
Average Age	40.1	40.4	42.7
Average Age (Male)	37.6	37.8	40.9
Average Age (Female)	44.6	42.8	44.5

HOUSEHOLDS & INCOME

	1 MILE	3 MILES	5 MILES
Total Households	7,477	33,625	73,805
# of Persons per HH	1.8	1.9	1.9
Average HH Income	\$46,178	\$49,662	\$51,527
Average House Value	\$76,118	\$88,467	\$108,864

* Demographic data derived from 2020 ACS - US Census



Noah Yoder
Senior Associate
614.285.6505
Noah@MEREIG.com

Ben Collier
Senior Vice President
614.285.6505
Ben@MEREIG.com

4300 E Broad St, Suite A
Columbus, OH 43213
614.285.6505
mereig.rent



MEET THE TEAM

LAKESHORE PLAZA | 22800-22840 LAKE SHORE BLVD , EUCLID , OH 44123-1321



NOAH YODER

Senior Associate

Direct: 614.285.6505
Noah@MEREIG.com
OH #SAL.2018006269



BEN COLLIER

Senior Vice President

Direct: 614.285.6505
Ben@MEREIG.com
OH #LPR.2022005581

DISCLAIMER

DISCLAIMER

All information deemed reliable but not guaranteed. All property is subject to prior lease, sale, change or withdrawal. Neither listing agent(s)/broker(s) or information provider(s) shall be responsible for any typographical errors, misinformation, misprints and shall be held totally harmless. Listing(s) information is provided for consumers' personal, non-commercial use and may not be used for any purpose other than to identify prospective properties consumers may be interested in purchasing or leasing. The data relating to real estate in this document may have been obtained from third party sources. All information should be independently verified by the user. This document and its data may be syndicated via third parties and may not be current as of the time of viewing; users should contact the listing agent, broker, or information provider for the most current information. The listing agent(s)/broker(s)/company collectively "ME" are affiliated with or have been engaged by the owner of the property to market it and do not represent you, the consumer. Information concerning the property described herein has been obtained from sources other than ME, and neither Owner nor ME, nor their respective equity holders, officers, directors, employees and agents makes any representations or warranties, express or implied, as to the accuracy or completeness of such information. Any and all reference to age, square footage, income, expenses and any other property specific information are approximate. Any opinions, assumptions, or estimates contained herein are projections only and used for illustrative purposes and may be based on assumptions or due diligence criteria different from that used by a consumer. ME and Owner disclaim any liability that may be based upon or related to the information contained herein. Consumers should conduct their own independent investigation and rely on those results. The information contained herein is subject to change. The Property may be withdrawn without notice. By utilizing this document, you agree to hold all parties harmless for the information contained herein in every manner allowed by law. The content of this document, together with any linked or included information or media, is confidential. It is strictly forbidden to share any part of this message with any third party, without written consent of ME. If you received this document by mistake, please notify ME immediately and follow with its permanent deletion, so that we can ensure such a mistake does not occur in the future. Consumers should review their government's approved guide to agency.

Noah Yoder
Senior Associate
614.285.6505
Noah@MEREIG.com

Ben Collier
Senior Vice President
614.285.6505
Ben@MEREIG.com

4300 E Broad St, Suite A
Columbus, OH 43213
614.285.6505
mereig.rent

