

270 PARK AVENUE SOUTH

NORTHWEST CORNER OF EAST 21ST STREET



PROMINENT CORNER FLAGSHIP OPPORTUNITY

DETAILS :

Ground: **1,660 SF** | Mezzanine: **2,281 SF** | Corner Frontage: **90' (30' on Park Ave)**
Term: **Pop Up or Sublease through 2/28/2021** | Possession: **Arranged** | Rent: **Inquire**

COMMENTS :

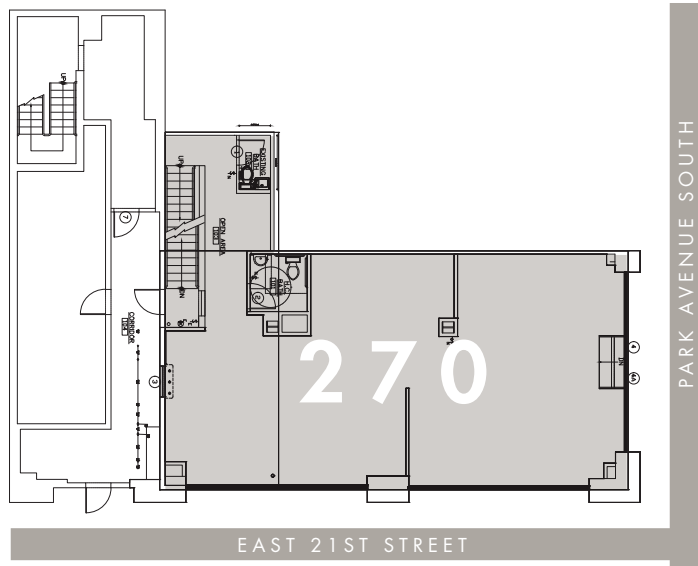
- Available for holiday pop-up on December 1, 2019
- Sublease from Poggenpohl Kitchens
- Double-height frontage
- Opportunity to test the market at a below market rate

NEIGHBORS INCLUDE :

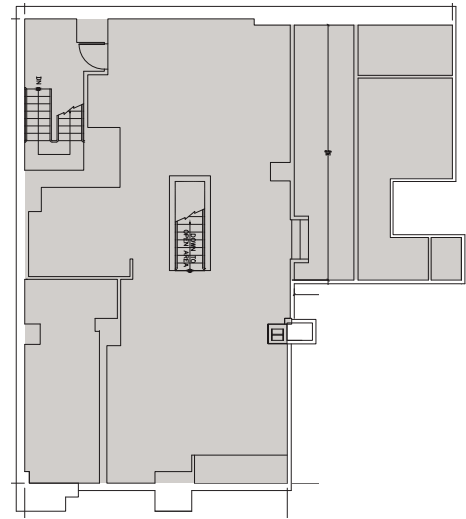
- NY Health & Racquet Club
- Morton Williams
- Bank of America
- Ligne Roset
- Barbounia
- FedEx Office
- Herman Miller
- Fotografiska
- Chase Bank
- TD Bank



Ground Floor



Mezzanine



CONTACT:

Michael Glanzberg

212.604.9004

michael@sinvin.com

Margie Sarway

646.673.8742

margie@sinvin.com

SINVIN
COMMERCIAL REAL ESTATE & ADVISORY

