



S & D Real Estate

27 East Jericho Turnpike– Suite 2, Mineola, New York 11501

516-248-6905 516-741-4587 (Fax)

888 Veterans Memorial Highway– Suite 530, Hauppauge 11788

631-761-9220 631-761-9221 (Fax)

FOR LEASE



LOCATION

**64 SMITHTOWN BLVD
SMITHTOWN, NY 11787**

IDENTIFIED AS

**SECTION 135
BLOCK 5
LOT 7**

PROPERTY TYPE

COMMERCIAL OFFICE

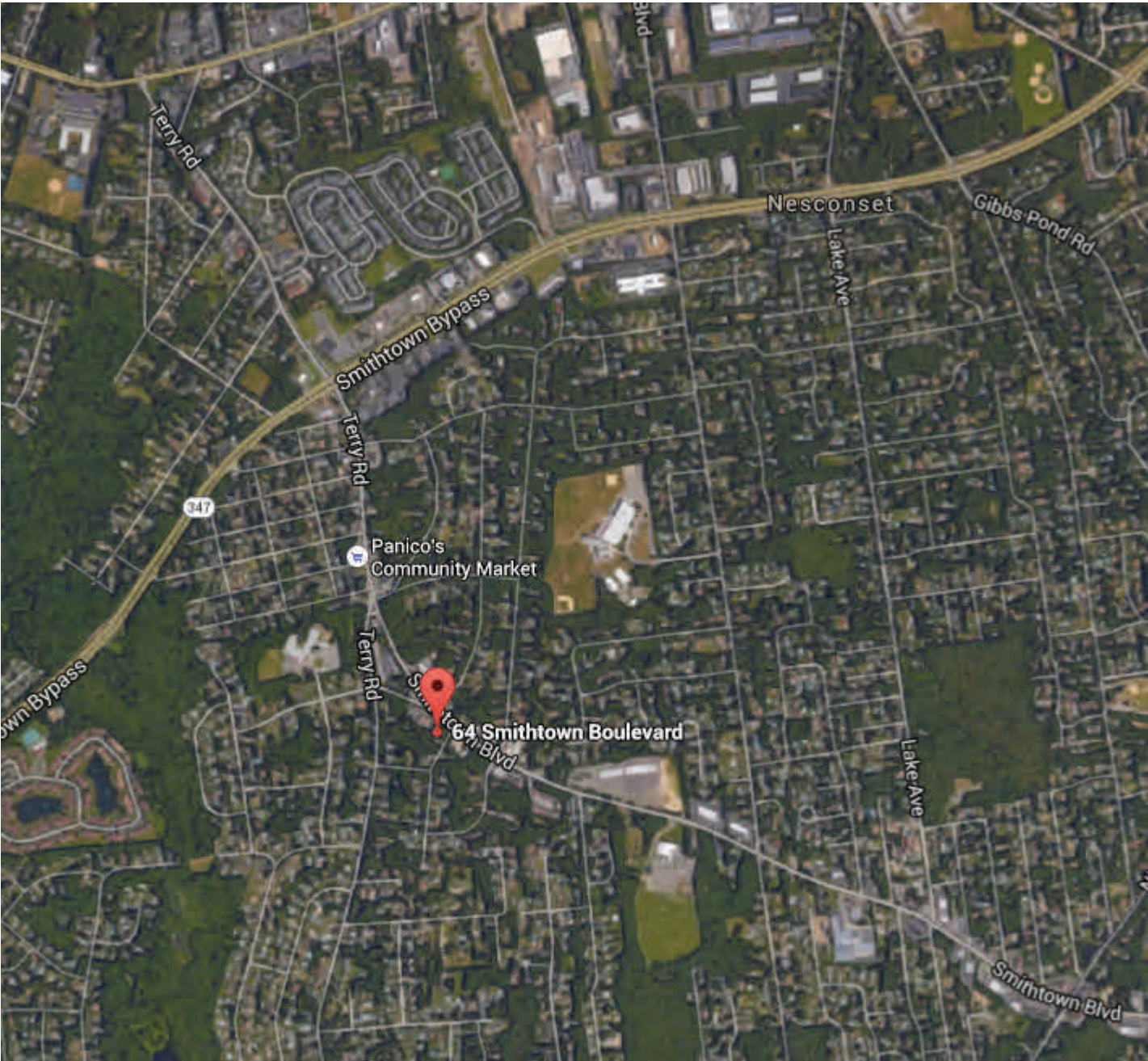
****NEWLY RENOVATED PROFESSIONAL OFFICE****

- CONVENIENTLY LOCATED 1/2 MILE SOUTH OF ROUTE 347 (NESCONSET HIGHWAY & TERRY ROAD INTERSECTION)
- PRIVATE ENTRANCE
- ALARMED OFFICE
- FRESHLY PAINTED WITH NEW FLOORING & LED LIGHTING
- PRIVATE BATHROOMS AND USE OF KITCHENETTE
- USE OF CONFERENCE ROOM UPON REQUEST
- TENANT PAYS FOR CHOICE OF VERIZON OR CABLE
- LANDLORD PAYS UTILITIES

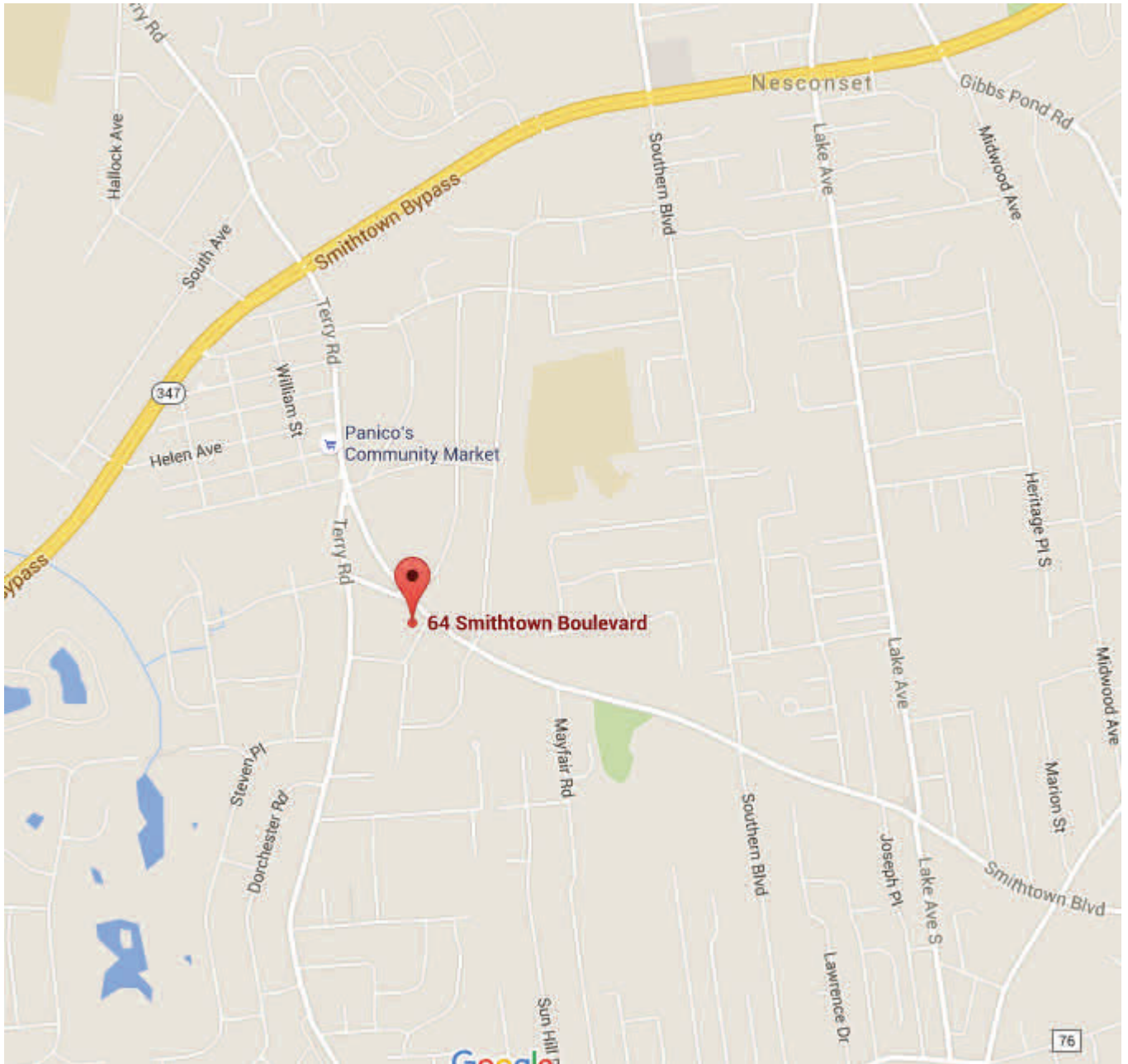
\$800/ MONTH INC. UTILITIES

Contact: Gina Coletti
631-926-5385 (Cell)

AERIAL MAP



LOCATION MAP



EXTERIOR PHOTO



INTERIOR PHOTOS



INTERIOR PHOTOS CONTINUED



INTERIOR PHOTOS CONTINUED

