



77 ACCORD PARK DRIVE

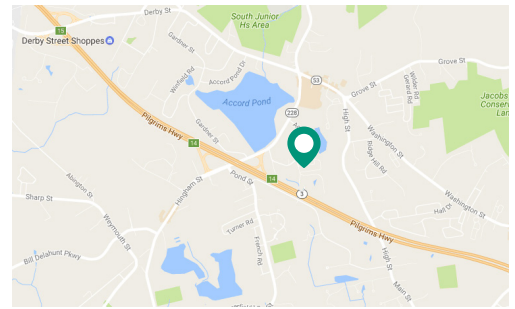
128 SOUTH | NORWELL, MA

FLOOR	SPACE	DATE AVAILABLE
Unit B9 & B10	6,000 SF	Immediately

- Located in a Master-Planned 100,000 SF First Class Office/R&D Park
- On-Site Management
- Landscaped Campus Style Setting
- Ample Parking & Tailboard Loading
- Convenient Access to Rte-3 (Exit 14)

ELLISON PATTEN
617.951.4136
epatten@lpc.com

LINCOLN
PROPERTY
COMPANY



77 ACCORD PARK DRIVE

128 SOUTH | NORWELL, MA

BUILDING SPECIFICATIONS

Building Size	22,000 SF
Year Built	1983
Clear Height	18'
Column Spacing	30' x 100' Column Free Bays
Loading	Tailboard Loading Docks
Parking	Ample

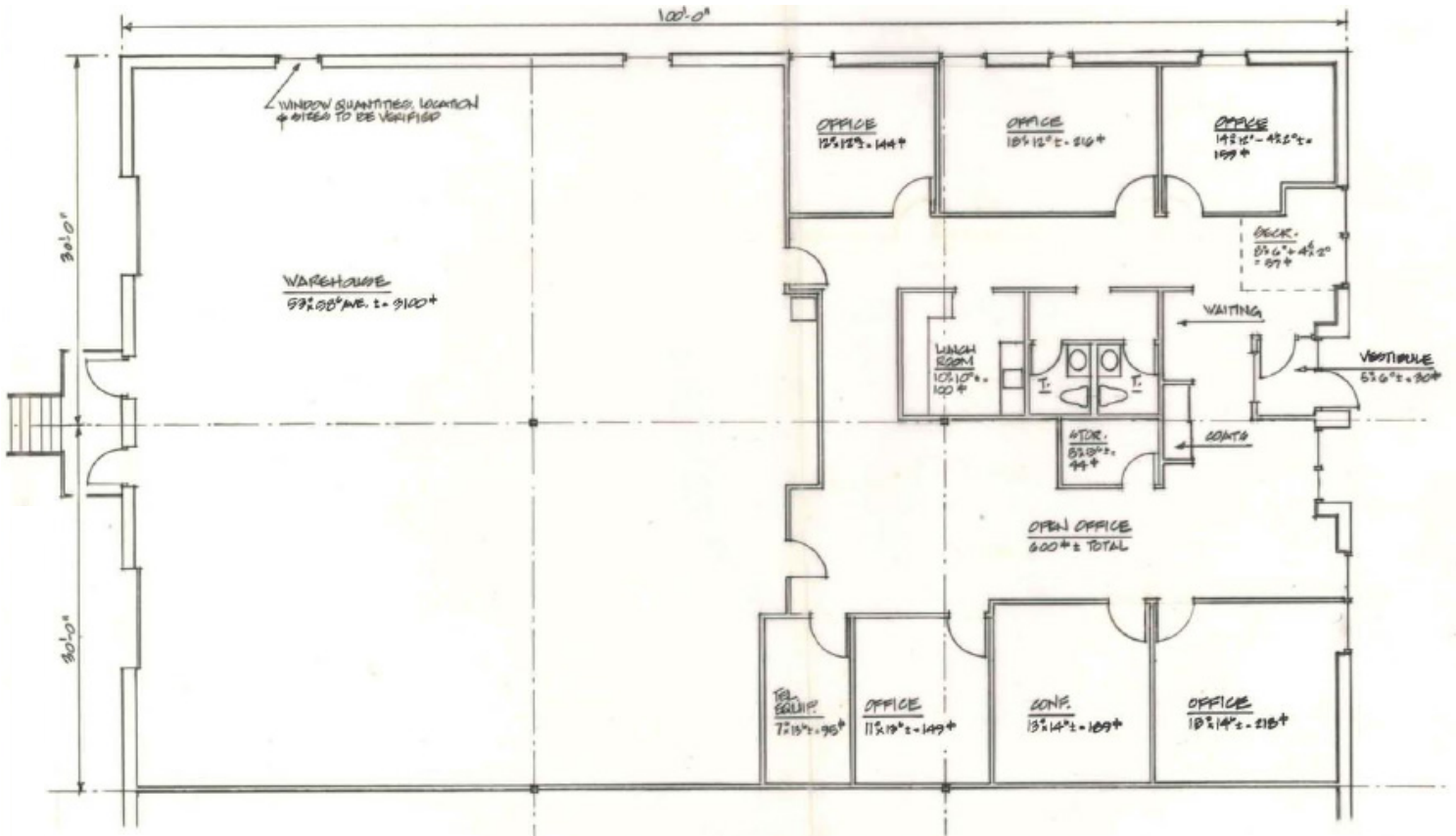
SPACE SPECIFICATIONS

Available Space	Units B9 & B10	6,000 SF
Term	Negotiable	
Rental Rate	Negotiable	
Availability	Immediate	

ELLISON PATTEN
617.951.4136
epatten@ipc.com

LINCOLN
PROPERTY
COMPANY

UNITS B9 & B10 | 6,000 SF



ELLISON PATTEN
617.951.4136
epatten@lpc.com