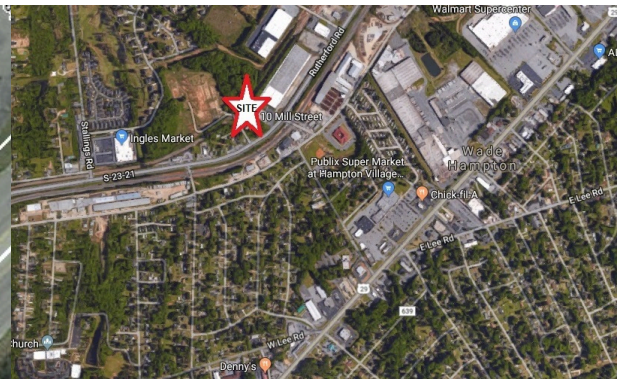


0.5± Acre - Development Potential
Rutherford Rd & Mill St. | Greenville, SC 29609

For Sale
\$64,500



This 0.5± acre of land is located at 10 Mill St.,
frontage on Rutherford Rd. just half mile from
Stallings Rd. and Wade Hampton Blvd.

- 0.5± acre of level land
- Zoning I-1
- Tax Map#:
 - [P019000300700](#)
 - [P019000301100](#)
- Greenville County
- 138± Feet of frontage on Rutherford Rd.
- 127± Feet of frontage on Mill St.
- Traffic Count: 15,000± VPD
- [Demographic Report Link](#)

Graeme Milley
Commercial Sales Professional
GMilley@JoynerCommercial.com
864-986-0195
www.joynercommercial.com/



Michael Joseph
Commercial Broker, Sales and Leasing
MJoseph@joynercommercial.com
(864) 915-4577
www.JoynerCommercial.com



**BERKSHIRE
HATHAWAY**
HomeServices

C. Dan Joyner, REALTORS®

COMMERCIAL DIVISION

24 Vardry Street, Ste. 401 Greenville, SC 29601

©2019 BHH Affiliates, LLC. Real Estate Brokerage Services are offered through the network member franchisees of BHH Affiliates, LLC. Most franchisees are independently owned and operated. Berkshire Hathaway HomeServices and the Berkshire Hathaway HomeServices symbol are registered service marks of HomeServices of America, Inc.® Information not verified or guaranteed. If your property is currently listed with a Broker, this is not intended as a solicitation.