

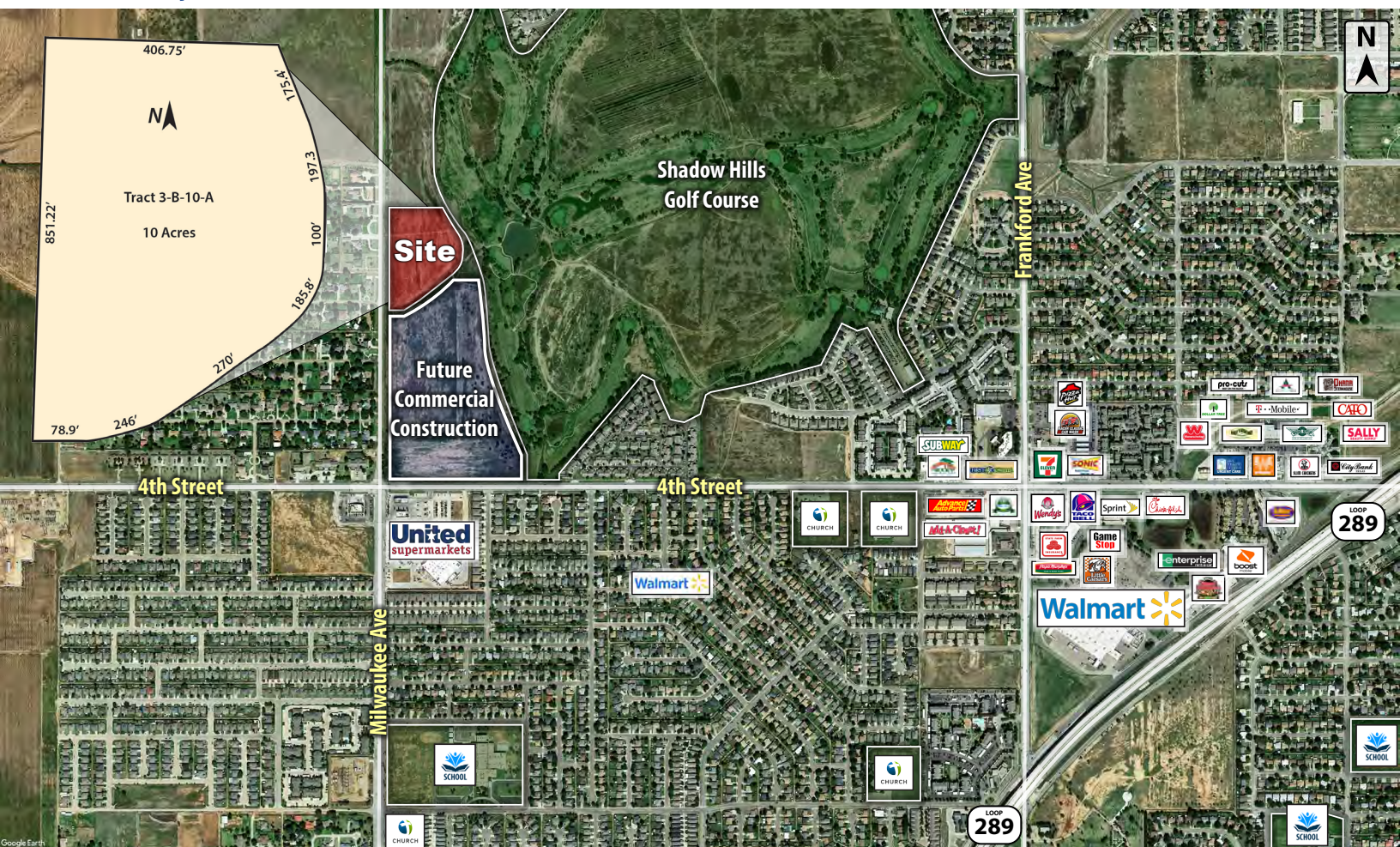
LAND

FOR SALE



CAPITAL ADVISORS

1ST & MILWAUKEE
LUBBOCK, TX 79416



NEARBY TENANTS 1.5 MILES



PROPERTY INFORMATION

LOCATION:

This property sits north of 4th Street on the east side of Milwaukee Avenue just inside the northwest city limits.

DESCRIPTION:

A large development tract in growing northwest Lubbock. Conveniently located in the Frenship School District by a brand new United Supermarket. Also a quick 12-minute drive from Texas Tech University, and only 5-minutes from Lubbock Christian University.

FLOODZONE:

Property is not in the 100-year floodplain.

SIZE:

10 Acres

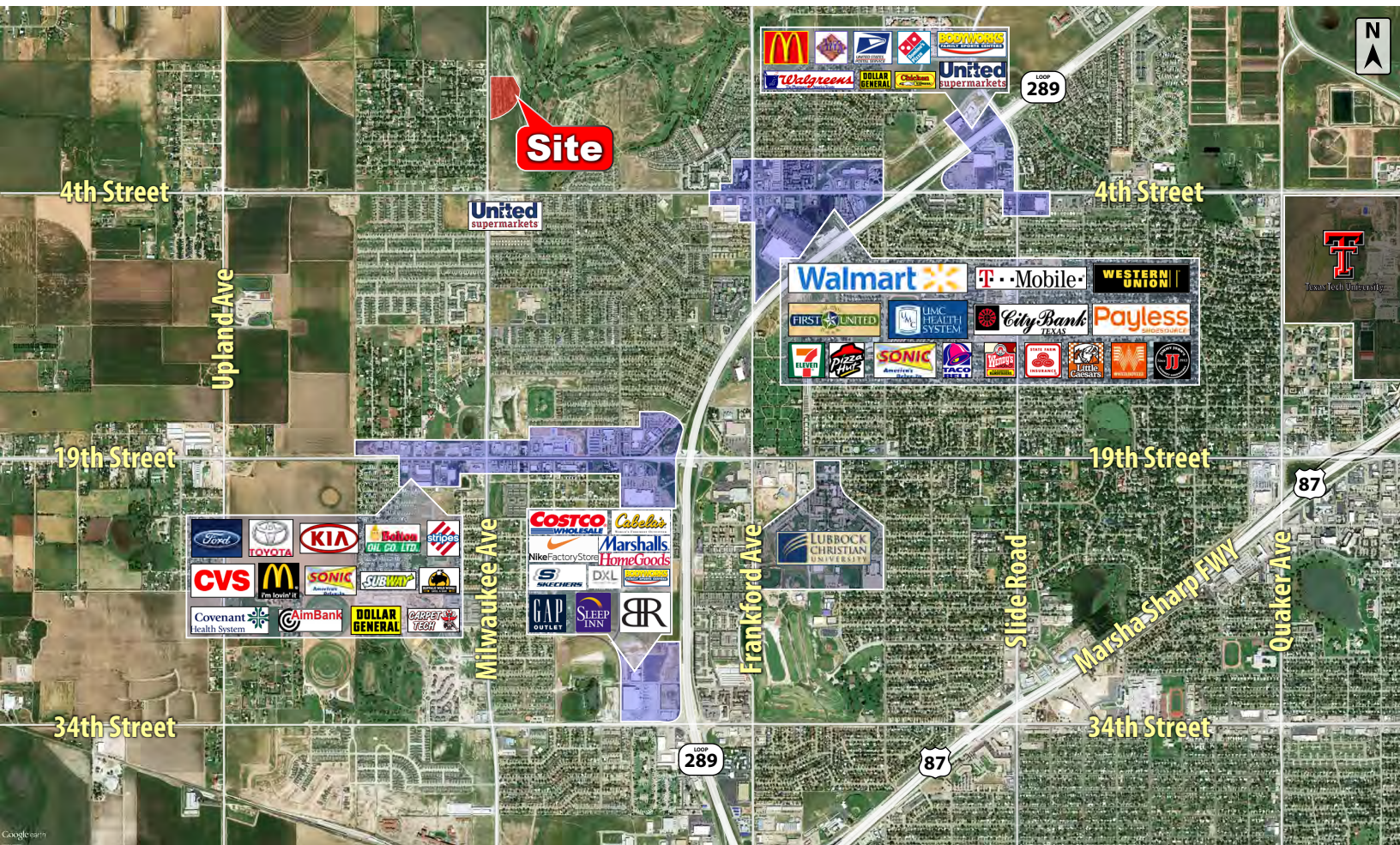
SALES PRICE:

\$2.50 per square foot

CBCCapitalAdvisors.com
CBCWorldwide.com

Coldwell Banker Commercial
CAPITAL ADVISORS

4924 S. Loop 289
Lubbock, TX 79414
806.793.0888

LUBBOCK, TX
CITY MAP


DEMOGRAPHICS

POPULATION	1 MILE	3 MILES	5 MILES
TOTAL POPULATION	3,888	54,515	125,262
MEDIAN AGE	43.4	33.6	34.3
MEDIAN AGE (MALE)	34.2	32.9	33.2
MEDIAN AGE (FEMALE)	35.0	34.5	35.7
HOUSEHOLDS & INCOME	1 MILE	3 MILES	5 MILES
TOTAL HOUSEHOLDS	1,709	22,703	51,874
# OF PERSONS PER HH	2.3	2.4	2.4
AVERAGE HH INCOME	\$67,687	\$64,930	\$70,729
AVERAGE HOUSE VALUE	\$174,673	\$150,550	\$153,928

For Additional
Information Contact:



Beau Tucker, CCIM
The Land Man

806.784.3298 direct

806.470.3944 cell

BTucker@CBCWorldwide.com