

# STANTON STEEL

712 SQUIRE COURT, GRAIN VALLEY, MO 64029



# REECE

COMMERCIAL REAL ESTATE

a Berkshire Hathaway Affiliate



## HIGHLIGHTS

- 8,400 SF Building, Dimensions 140' x 60'
- 2 Manual Overhead Doors 14'H x 12'W
- Office, Reception, Breakroom, 2 Bath
- Warehouse is Heated
- 3 Phase
- Plenty of Parking
- .6 Miles from I-70
- Steel Business and Equipment also for Sale

**FOR SALE**

**\$460,000 (\$54.76/SF)**

## DEMOGRAPHICS

	1 Mile	3 Mile	5 Mile
2019 POPULATION	3,091	20,505	63,727
MED HOUSEHOLD INCOME	\$70,143	\$84,140	\$82,302

### Ryan Schulteis

Office: 913-945-3741  
Mobile: 785-766-6712  
Email: ryans@reececommercial.com  
Main Office: 913-652-4300

The information above has been obtained from sources believed reliable. While we do not doubt its accuracy we have not verified it and make no guarantee, warranty or representation about it. It is your responsibility to independently confirm its accuracy and completeness. Any projections, opinions, assumptions, or estimates used are for example only and do not represent the current or future performance of the property. You and your advisors should conduct a careful, independent investigation of the property to determine to your satisfaction the suitability of the property for your needs.

© 2019

# AERIALS

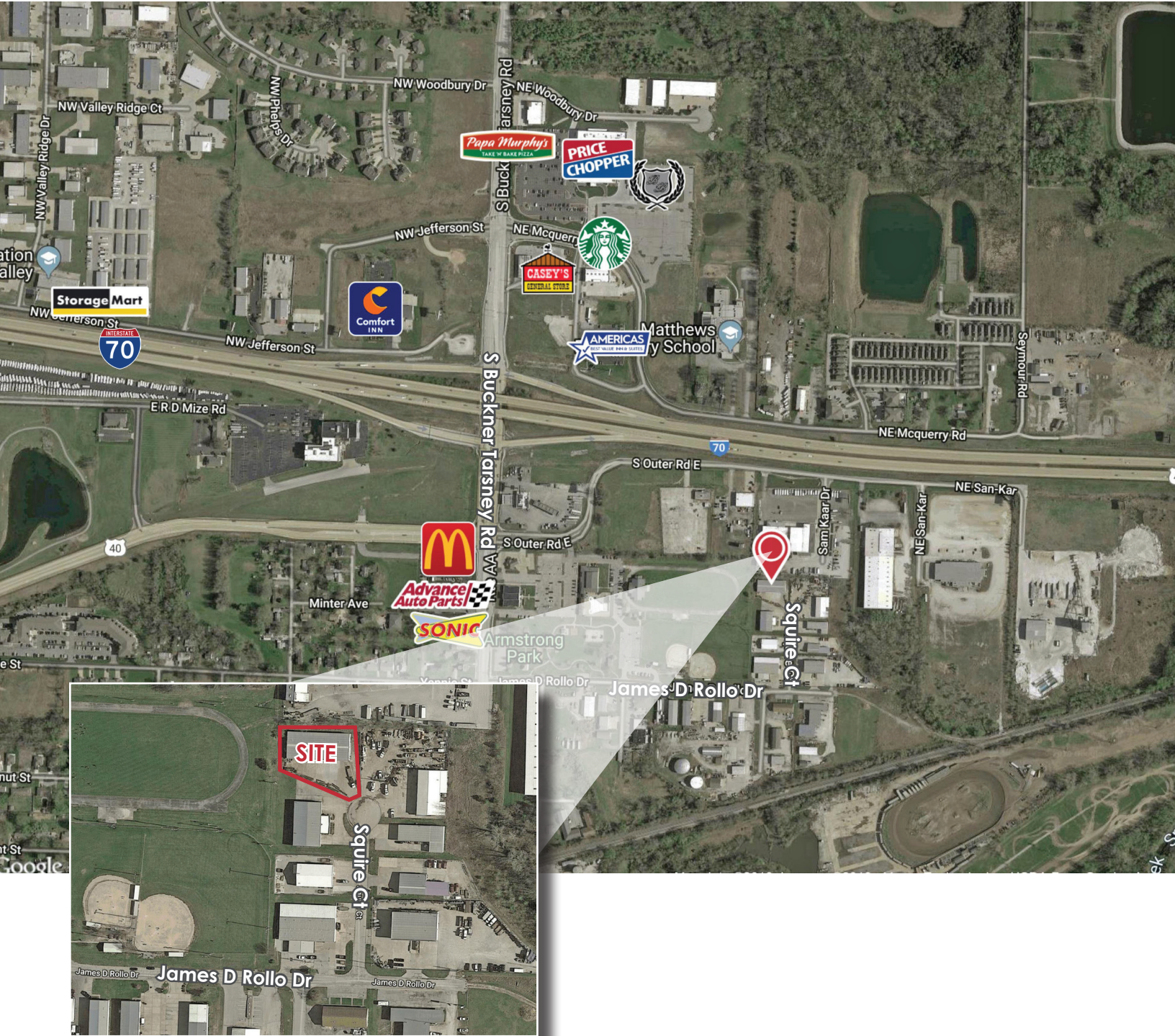
712 SQUIRE COURT, GRAIN VALLEY, MO 64029



# REECE

COMMERCIAL REAL ESTATE

a Berkshire Hathaway Affiliate



## Ryan Schulteis

Office: 913-945-3741  
Mobile: 785-766-6712  
Email: ryans@reececommercial.com  
Main Office: 913-652-4300

The information above has been obtained from sources believed reliable. While we do not doubt its accuracy we have not verified it and make no guarantee, warranty or representation about it. It is your responsibility to independently confirm its accuracy and completeness. Any projections, opinions, assumptions, or estimates used are for example only and do not represent the current or future performance of the property. You and your advisors should conduct a careful, independent investigation of the property to determine to your satisfaction the suitability of the property for your needs.

© 2019