



DOWNTOWN BOISE RETAIL & OFFICE SPACES



THE SONNA BUILDING

906-910 Main Street
Boise, Idaho 83702

210 SF TO 3,803 SF

PROPERTY HIGHLIGHTS

1st Fl Retail/Office	3,803 SF - \$16.50/SF NNN
Estimated NNN	\$5.50/SF
Office - Ste 258	1,563 RSF - \$18.00/SF
Office - Ste 306	425 RSF - \$18.00/SF
Office - Ste 310	1,010 RSF - \$18.00/SF
Office - Ste 320	697 RSF - \$18.00/SF
Office - Ste 328	210 RSF - \$18.00/SF
Office - Ste 332	212 RSF - \$18.00/SF
Office - Ste 354	660 RSF - \$18.00/SF
Office Lease Type	Full Service



BREE WELLS
Senior Associate
Office Specialist
+1 208 287 9492
bree.wells@paccra.com

JENNIFER MCENTEE
Director
Office/Investment Specialist
+1 208 287 9495
jennifer.mcentee@paccra.com

DJ THOMPSON
Director
Office/Investment Specialist
+1 208 287 8438
dj.thompson@paccra.com

999 West Main Street, Ste 1300
Boise, Idaho 83702
Main +1 208 287 9500
Fax +1 208 287 9501
paccra.com

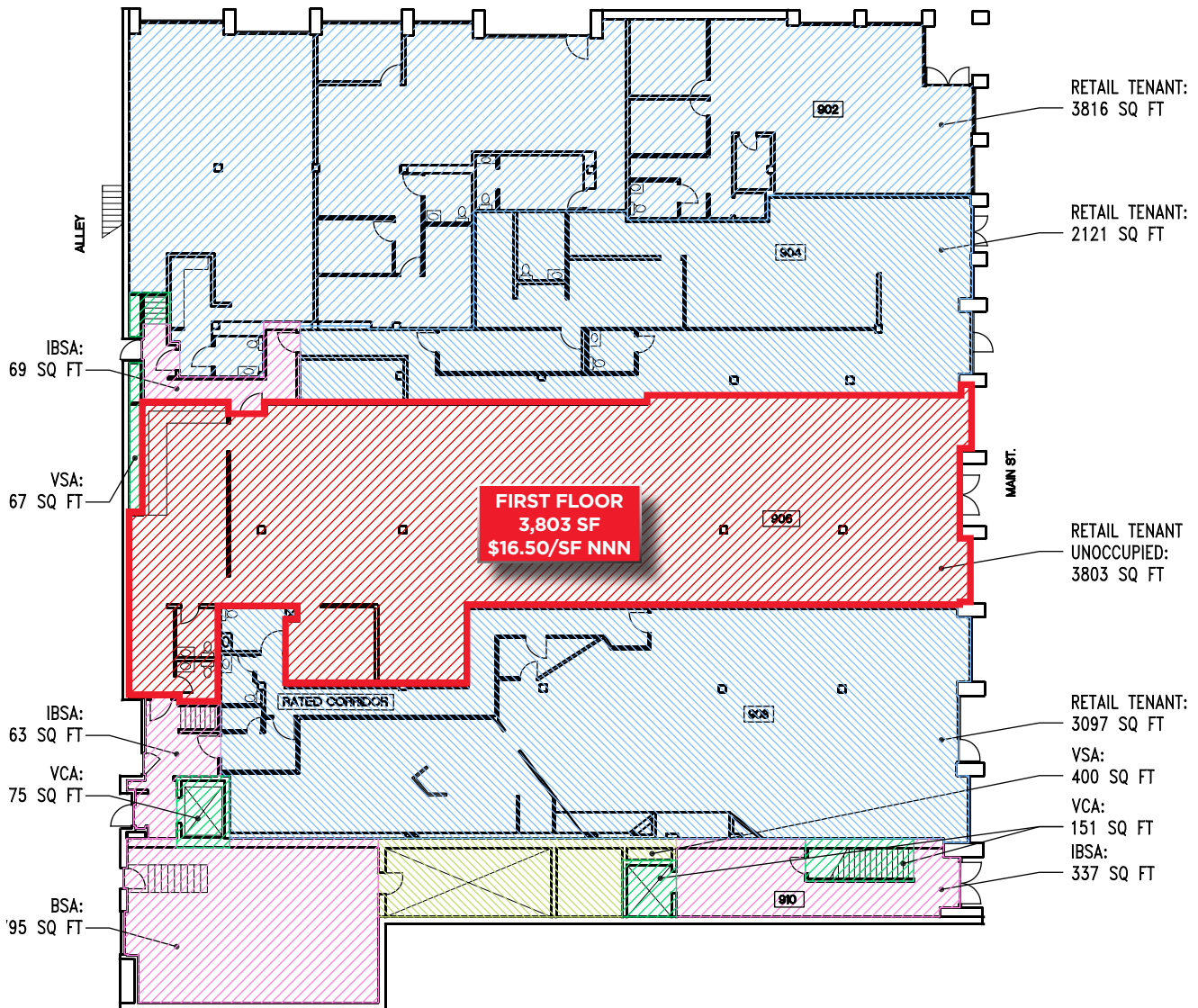
THE SONNA BUILDING

906-910 Main Street, Boise, Idaho 83702

210 SF TO 3,803 SF - FOR LEASE



FIRST FLOOR LAYOUT & LISTING DETAILS



Listing Features

- Large first floor retail/office space with Main Street frontage consists of open sales floor area & restrooms
- Second & third floor office spaces consist of private offices and open work areas, lease type full service including janitorial
- Amenities include complimentary coffee and access to shared conference rooms, break rooms & rest rooms
- Elevator access provided for upper floors
- Large windows provide natural light throughout building
- Well known property surrounded by public parking
- Other tenants include Charles Schwab, ACLU, Matrix Engineering, Crandall Law & other professional services

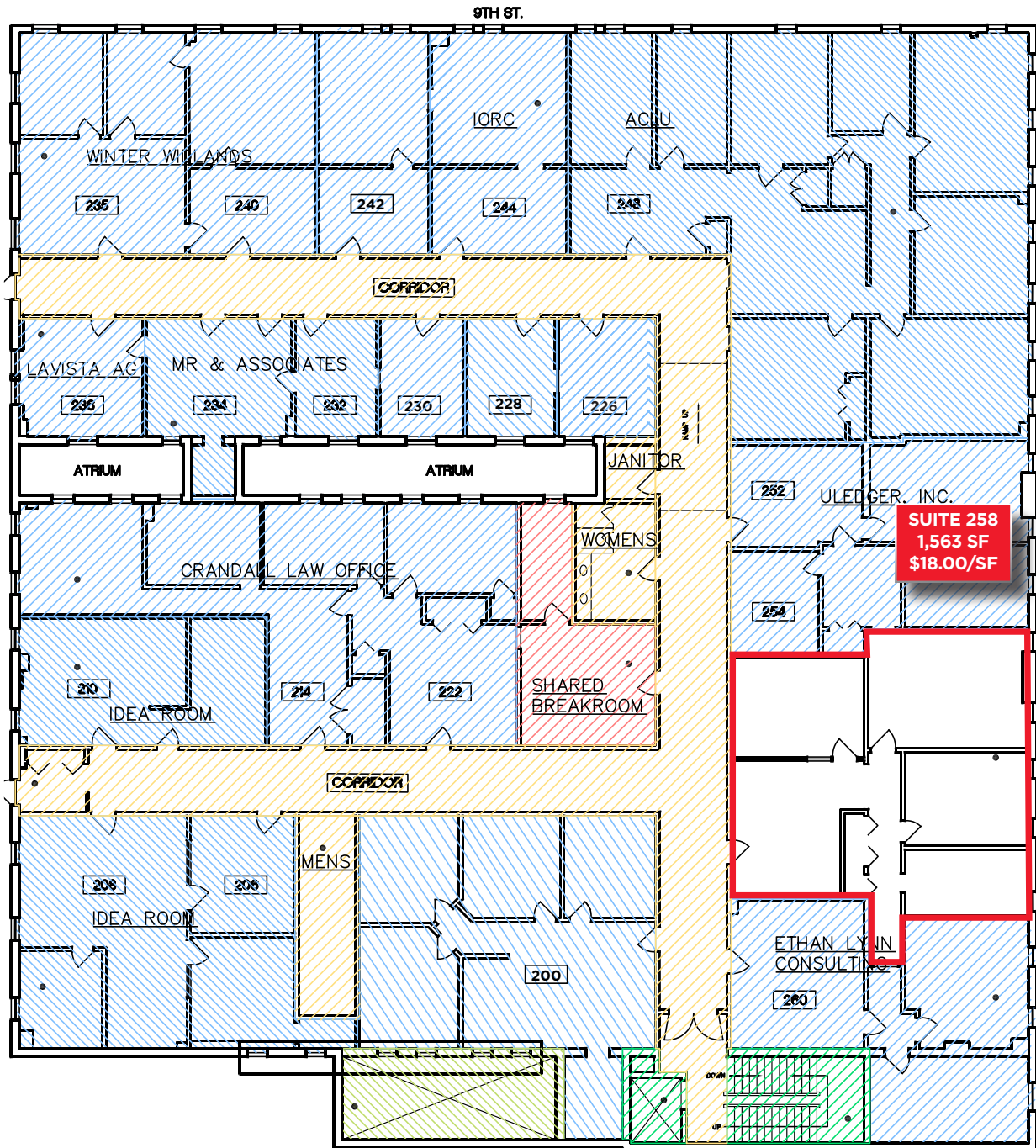
THE SONNA BUILDING

906-910 Main Street, Boise, Idaho 83702

210 SF TO 3,803 SF - FOR LEASE



SECOND FLOOR LAYOUT



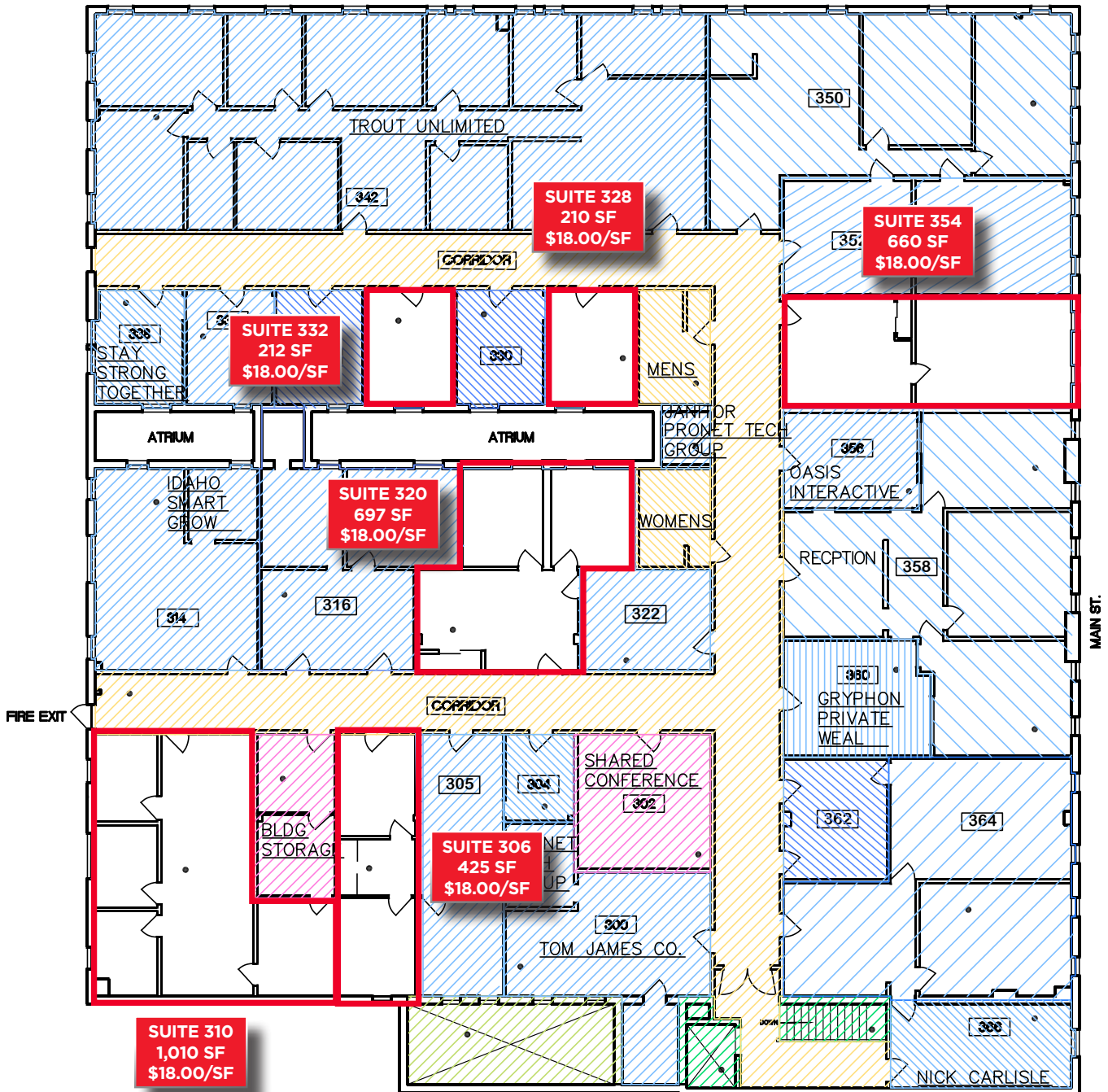
THE SONNA BUILDING

906-910 Main Street, Boise, Idaho 83702

210 SF TO 3,803 SF - FOR LEASE



THIRD FLOOR LAYOUT



THE SONNA BUILDING

906-910 Main Street, Boise, Idaho 83702

210 SF TO 3,803 SF - FOR LEASE

