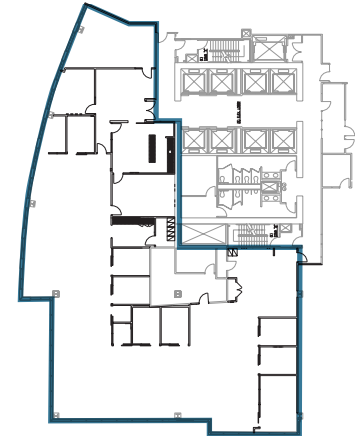
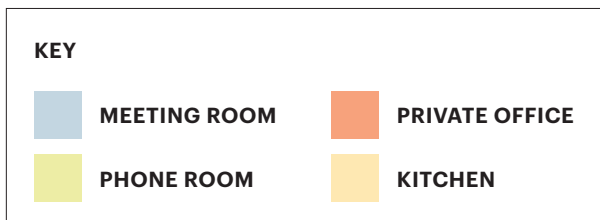


LAKE  
WASHINGTON  
& SEATTLE  
SKYLINE  
VIEW



MT. RAINIER  
VIEW



## At the Core of Downtown Bellevue

- **9,856 RSF**
- **Can be Available Immediately**
- **Lobby Exposure + Western Views**
  - 9 ft. floor-to-ceiling exterior windows
- **Fully Furnished/Plug & Play option**
- **Functional/Re-Useable Layout**
  - Reception
  - 36 cubicles currently
- [VIRTUAL TOUR](#)