

FOR LEASE

6200 Chevy Chase Drive

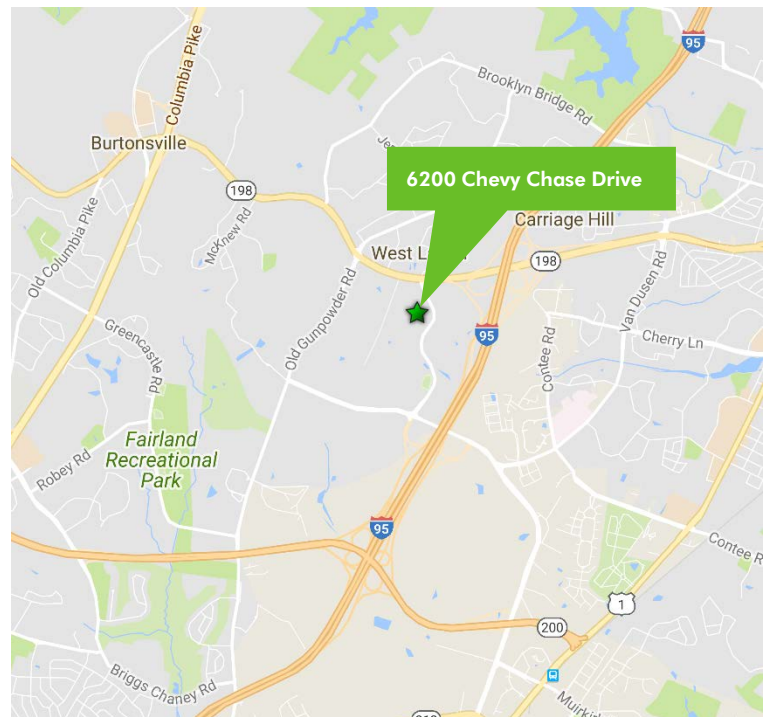
Laurel, MD 20707

Entire Building Available



BUILDING FEATURES

- + Adjacent to I-95 and the Inter-County-Connector (RT-200)
- + Up to 5.0/1,000 parking ratio
- + One story 104,960 square foot building
- + Double Tree Hotel located nearby (208 rooms)
- + American Sports Grille restaurant within walking distance
- + Building in shell condition



www.cbre.com/bethesda

CBRE

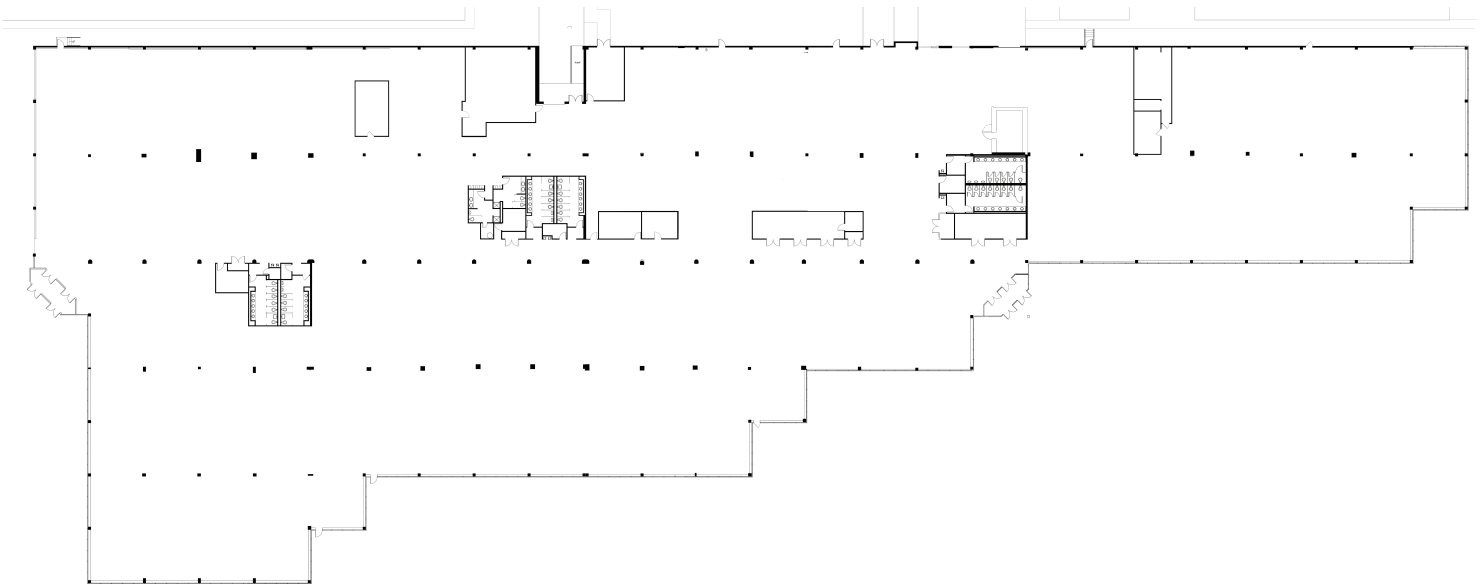
FOR LEASE

6200 Chevy Chase Drive

Laurel, MD 20707

Floor/Suite	Square Feet	Rent	Occupancy	Term
100	104,960 SF	\$22.00 FS	Immediately	Negotiable

Suite 100: 104,960 SF



CONTACT US

DAVID MACHLIN

Senior Vice President
+1 301 215 4108
david.machlin@cbre.com

ANDREW M. THAU

Associate
+1 301 215 4128
andrew.thau@cbre.com

© 2018 CBRE, Inc. This information has been obtained from sources believed reliable. We have not verified it and make no guarantee, warranty or representation about it. Any projections, opinions, assumptions or estimates used are for example only and do not represent the current or future performance of the property. You and your advisors should conduct a careful, independent investigation of the property to determine to your satisfaction the suitability of the property for your needs. Photos herein are the property of their respective owners and use of these images without the express written consent of the owner is prohibited. CBRE and the CBRE logo are service marks of CBRE, Inc. and/or its affiliated or related companies in the United States and other countries. All other marks displayed on this document are the property of their respective owners.

www.cbre.com/bethesda

CBRE