
LOFT 401

ON MILL AVE

LOFT 401

CIRCA 1888

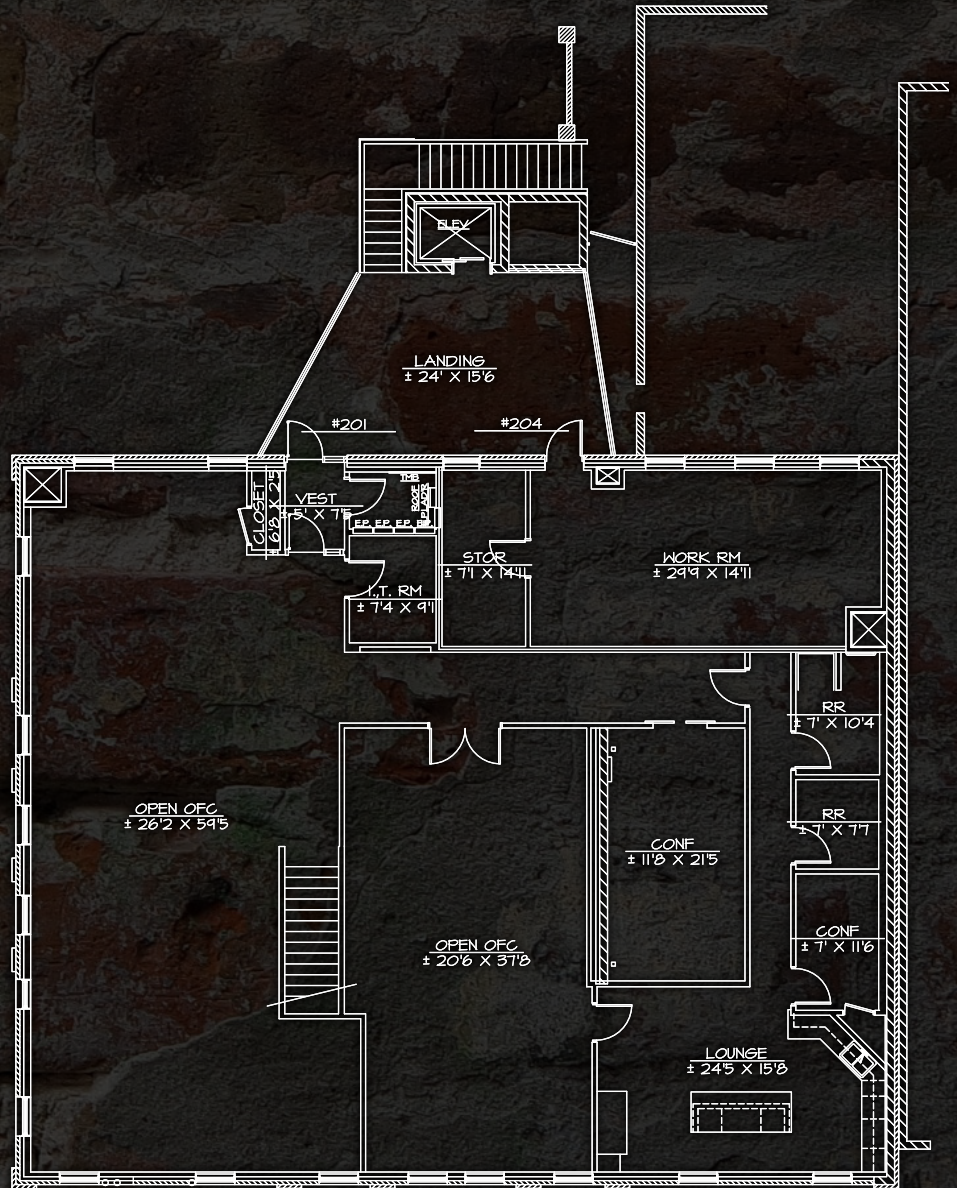
ORIGINAL USE: Saddlery | **Current Use:** Retail/Restaurant

Originally constructed in 1888 by R.G. Andre, this building serves as one of the finest examples of Victorian and Neo-Classical architecture in Tempe. Andre originally intended for the building to host his saddlery on the lower floor with a boarding house and apartments on the top floor. Over time, the building has hosted a number of businesses to include an undertaker, a U.S. Post Office, and the Arizona Cotton Growers Association. The building suffered fires in 1899 and 1999, but were restored following each incident.



FLOORPLAN ~ BUILDING FACTS

4,075 RSF
\$19.00 FSG
BUILT IN 1888
BUILDING IS ON HISTORICAL REGISTER
IN THE HEART OF TEMPE, ON MILL AVE
ADJACENT TO LIGHT RAIL, AND TEMPE STREET CAR
BIKE AND SCOOTER ACCESSIBLE
MINUTES TO LOOP 202
MINUTES TO PHOENIX SKY HARBOR





AMENITIES ~ LIFESTYLE



5,915
REAL
WALKABLE
AMENITIES



AMENITIES

100+

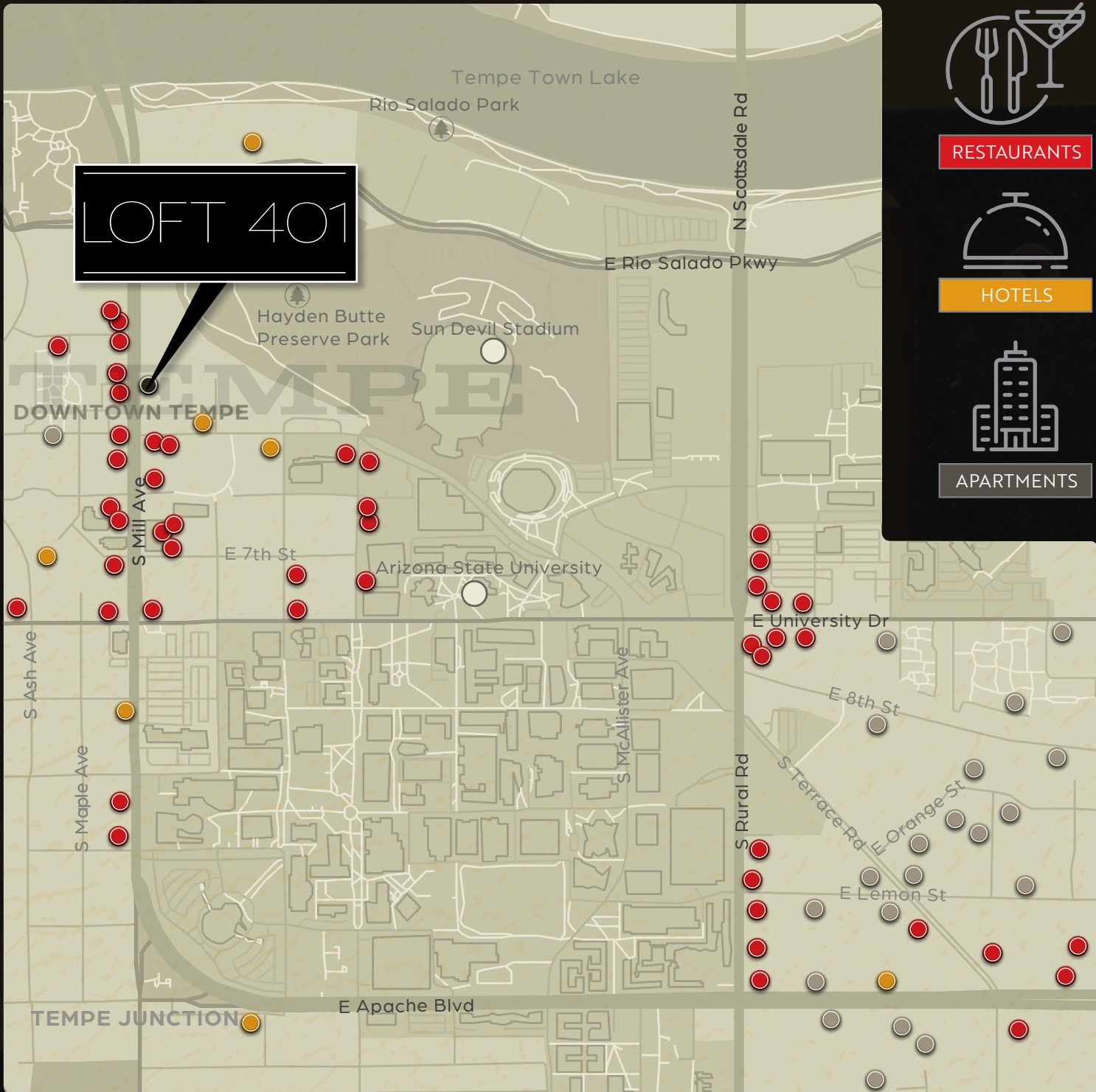
RESTAURANTS

25

HOTELS

36,934

APARTMENTS



LOFT 401

ON MILL AVE

GREG MAYER

Managing Director

+1 602 229 5905

greg.mayer@cushwake.com

PATRICK SCHRIMSHER

Senior Associate

+1 602 468 8529

patrick.schrimsher@cushwake.com



**CUSHMAN &
WAKEFIELD**

