

FOR SALE

FREESTANDING INDUSTRIAL BUILDING

1602 PRECISION PARK LANE | SAN DIEGO, CA 92154



PROPERTY FEATURES

- ± 26,600 Square Feet on ±1.58 Acre Parcel
- ± 5,500 Square Feet of Office
- Approximately 22' Clear Height
- Fenced Secure Yard/Parking
- Sprinklered throughout
- 5 Grade Level Doors
- 400+ Amps; 208/220 Volt; 3 Phase Power
- Located Near CA-905, I-805 and I-5 at Beyer Avenue
- IL3-1 Zoning (Heavy Commercial) - San Ysidro

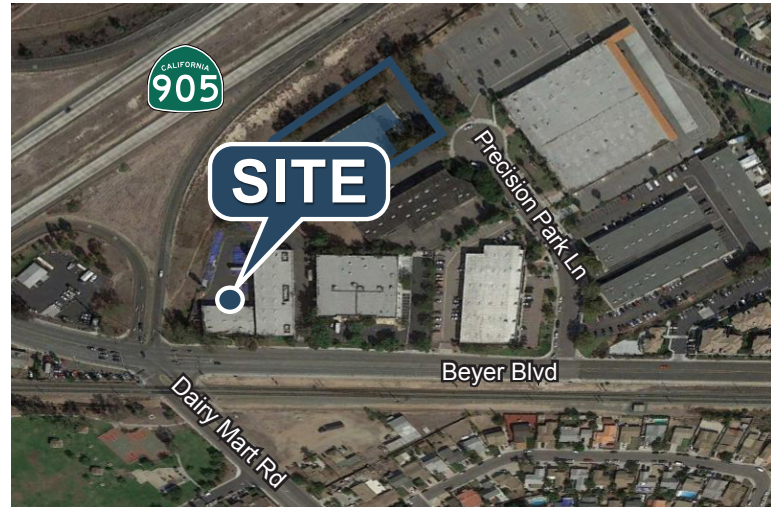
SALE PRICE: \$2,899,400 (\$109/SF)

MICHAEL MOSSMER
Senior Vice President
858.458.3347 [Direct]
mmossmer@voitco.com
Lic. #00998326

CURT PERRY
Senior Associate
858.458.3304 [Direct]
cperry@voitco.com
Lic. #01466077

1602 PRECISION PARK LN

Rare freestanding industrial building located in South San Diego, just one block off of Beyer boulevard, with excellent freeway visibility from the 905 freeway.



Voit

REAL ESTATE SERVICES

MPG
MOSSMER
PERRY GROUP

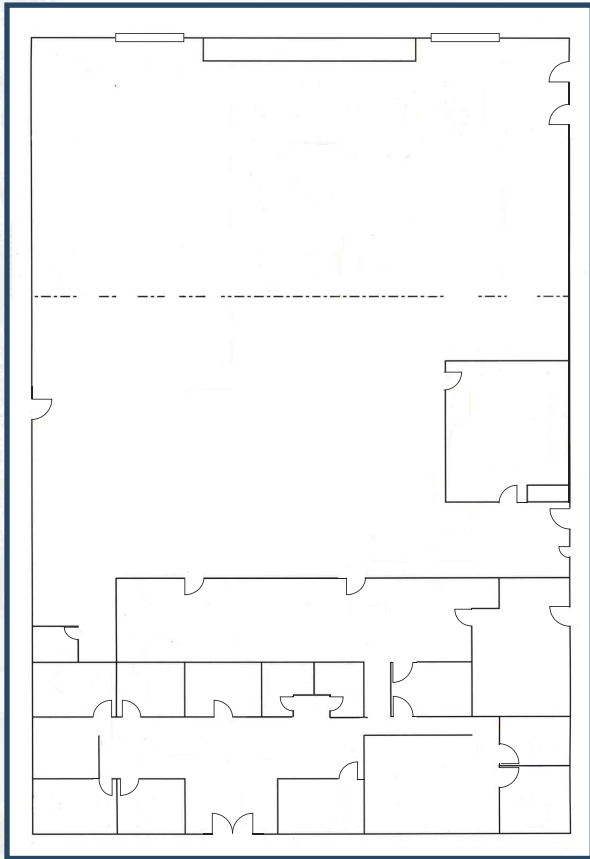
4747 Executive Drive, Suite 800, San Diego, CA 92121 • 858.453.0505 • 858.408.3976 Fax • Lic #01333376 | www.voitco.com

Licensed as Real Estate Salespersons by the CA Bur of Real Estate. The information contained herein has been obtained from sources we deem reliable. While we have no reason to doubt its accuracy, we do not guarantee it. ©2014 Voit Real Estate Services, Inc. All Rights Reserved. Real People. Real Solutions.® is a registered trademark of Voit Real Estate Services.

FOR SALE

FREESTANDING INDUSTRIAL BUILDING

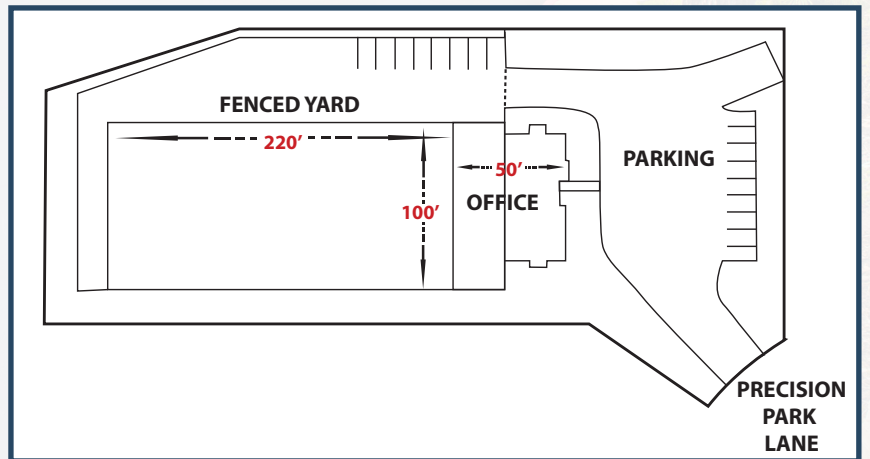
1602 PRECISION PARK LANE | SAN DIEGO, CA 92154



FLOOR PLAN



SITE PLAN



MICHAEL MOSSMER
Senior Vice President
858.458.3347 [Direct]
mmossmer@voitco.com
Lic. #00998326

CURT PERRY
Senior Associate
858.458.3304 [Direct]
cperry@voitco.com
Lic. #01466077

Voit

REAL ESTATE SERVICES

MPG
MOSSMER
PERRY GROUP

4747 Executive Drive, Suite 800, San Diego, CA 92121 • 858.453.0505 • 858.408.3976 Fax • Lic #01333376 | www.voitco.com

Licensed as Real Estate Salespersons by the CA Bur of Real Estate. The information contained herein has been obtained from sources we deem reliable. While we have no reason to doubt its accuracy, we do not guarantee it. ©2014 Voit Real Estate Services, Inc. All Rights Reserved. Real People. Real Solutions.® is a registered trademark of Voit Real Estate Services.

FOR SALE

FREESTANDING INDUSTRIAL BUILDING

1602 PRECISION PARK LANE | SAN DIEGO, CA 92154

MAP OF LOCATION



MICHAEL MOSSMER
Senior Vice President
858.458.3347 [Direct]
mmossmer@voitco.com
Lic. #00998326

CURT PERRY
Senior Associate
858.458.3304 [Direct]
cperry@voitco.com
Lic. #01466077

Voit

REAL ESTATE SERVICES

MPG
MOSSMER
PERRY GROUP

4747 Executive Drive, Suite 800, San Diego, CA 92121 • 858.453.0505 • 858.408.3976 Fax • Lic #01333376 | www.voitco.com

Licensed as Real Estate Salespersons by the CA Bur of Real Estate. The information contained herein has been obtained from sources we deem reliable. While we have no reason to doubt its accuracy, we do not guarantee it. ©2014 Voit Real Estate Services, Inc. All Rights Reserved. Real People. Real Solutions.® is a registered trademark of Voit Real Estate Services.