

# OFFICE SPACE FOR LEASE

3715 HAVEN AVENUE | MENLO PARK, CALIFORNIA

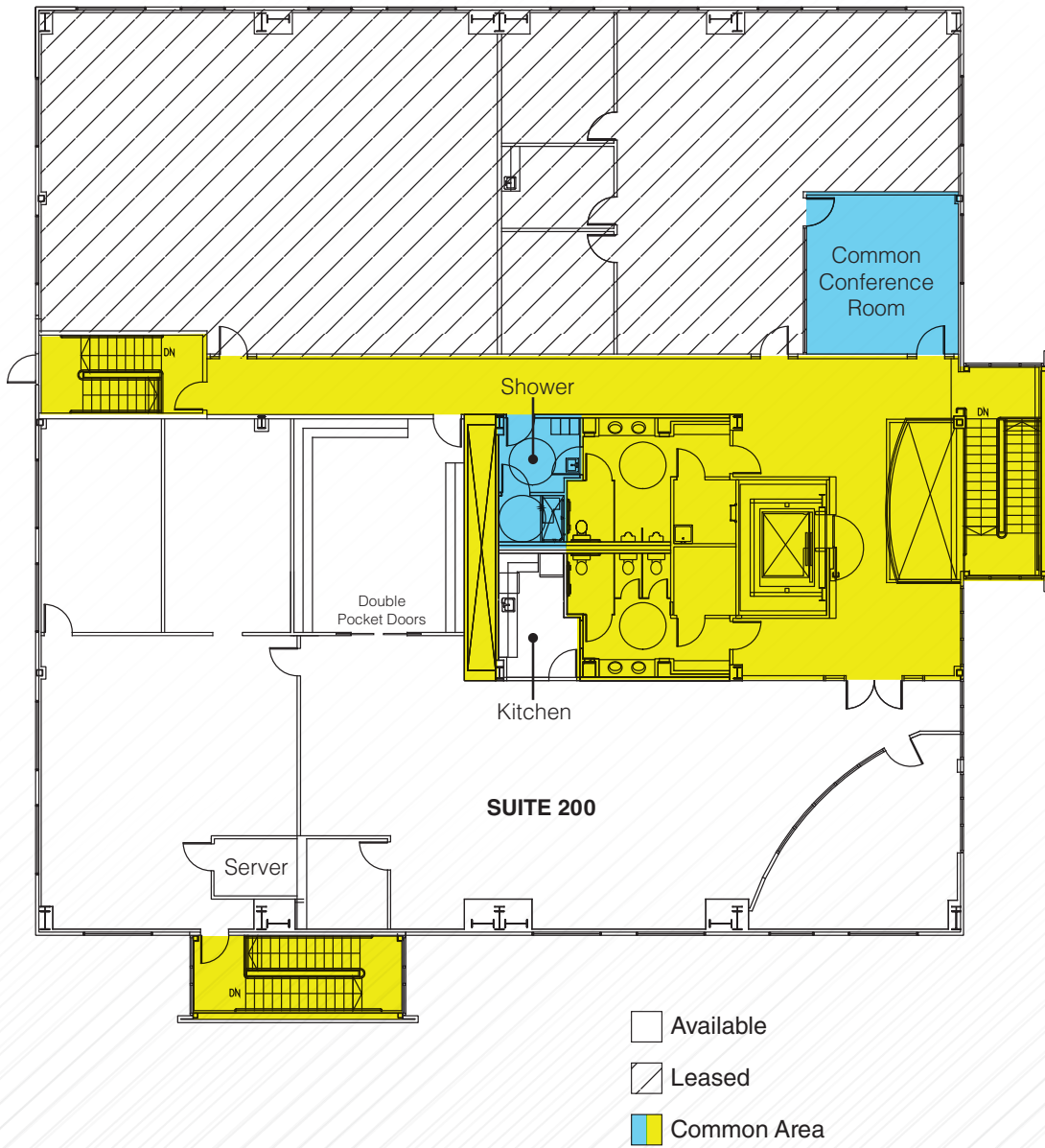


## PROPERTY HIGHLIGHTS

- Suite 200: ±5,042 SF
- Available January 1, 2019
- Dramatic Two-Story Building Lobby
- High Image Buildout and Finishes
- Ideal for Professional Service Firms or Technology Companies
- Abundant On-Site Parking
- Shower & Common Conference Room
- Excellent Glassline
- Short Walk to Marsh Road Caltrain Shuttle Stop
- Easy Access to Highway 101 and Dumbarton Bridge
- Half Mile to New Hotel Nia
- Ownership and Management On-Site - Deerfield Realty

# FLOOR PLANS

**SUITE 200: ±5,042 SF**





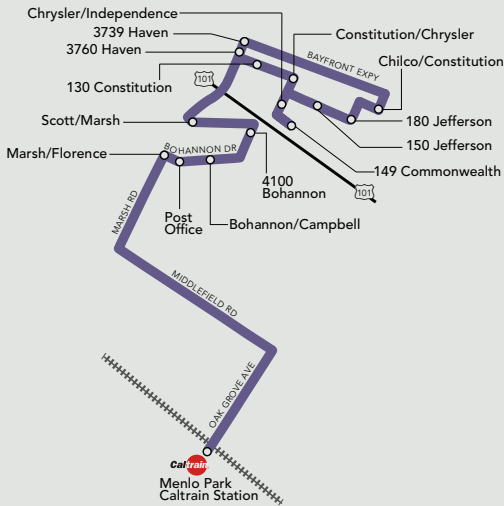
# MARSH ROAD SHUTTLE SCHEDULE



## MARSH ROAD SHUTTLE

### Menlo Park Caltrain to Marsh Road Business Parks

Effective November 6, 2017



The M3-Marsh Road shuttle is FREE and open to everyone. Stanford Health Care's Bohannon Line also provides all day service to the Bohannon Drive area.

#### FOR MORE INFORMATION

Menlo Park Shuttles  
650-330-6770  
menlopark.org/shuttles

Caltrain  
800-660-4287  
caltrain.com

Regional Transit  
Dial 5-1-1  
511.org

Stanford Health Care  
650-736-8000  
bohshuttle.stanfordchildrens.org

The Marsh Road Shuttle is funded by the City of Menlo Park and through generous grants from the following partner agencies:



CITY OF MENLO PARK

### Morning Schedule

	RUN 1	RUN 2	RUN 3	RUN 4	RUN 5	RUN 6	RUN 7
Menlo Park Caltrain (Depart)	6:59		7:59		8:56		10:01
Post Office	7:06		8:06		9:03		10:08
Bohannon/Campbell	7:07		8:07		9:04		10:09
4100 Bohannon	7:09		8:09		9:06		10:11
Scott/Marsh	7:10		8:10		9:07		10:12
130 Constitution	7:15		8:15		9:12		10:17
Constitution/Chrysler	7:16		8:16		9:13		10:18
149 Commonwealth	7:17		8:17		9:14		10:19
150 Jefferson	7:18		8:18		9:15		10:20
180 Jefferson	7:18		8:18		9:15		10:20
Chilco/Constitution	7:19		8:19		9:16		10:21
3639 Haven (Anton Menlo)	7:25		8:25		9:22		10:27
3760 Haven (Quicken)	7:27		8:27		9:24		10:29
Marsh/Florence	7:30		8:30		9:27		10:32
Menlo Park Caltrain (Arrive)	7:39		8:39		9:36		--

### Caltrain Arrivals in Menlo Park

From San Francisco	From San Jose	Shuttle Connection
#206: 6:50	#207: 6:41 #211: 6:54	Run 1 Dep. 6:59
#310: 7:17 #212: 7:29	---	Run 2 Dep. 7:34
#216: 7:48	#217: 7:41 #221: 7:54	Run 3 Dep. 7:59
#320: 8:17 #222: 8:29	---	Run 4 Dep. 8:34
#226: 8:48	#227: 8:44 #231: 8:51	Run 5 Dep. 8:56
#330: 9:17 #232: 9:29	#233: 9:17	Run 6 Dep. 9:34
#134: 9:56	#135: 9:50	Run 7 Dep. 10:01

### Afternoon Schedule

	RUN 1	RUN 2	RUN 3	RUN 4	RUN 5	RUN 6	RUN 7
Menlo Park Caltrain (Depart)		--		4:22		5:22	
130 Constitution		3:38		4:42		5:42	
Constitution/Chrysler		3:39		4:43		5:43	
149 Commonwealth		3:40		4:44		5:44	
150 Jefferson		3:41		4:45		5:45	
180 Jefferson		3:41		4:45		5:45	
Chilco/Constitution		3:42		4:46		5:46	
3639 Haven (Anton Menlo)		3:48		4:52		5:52	
3760 Haven (Quicken)		3:50		4:54		5:54	
Scott/Marsh		3:55		4:59		5:59	
4100 Bohannon		3:57		5:01		6:01	
Bohannon/Campbell		3:58		5:02		6:02	
Post Office		3:59		5:03		6:03	
Marsh/Florence		4:03		5:07		6:07	
Menlo Park Caltrain (Arrive)		4:12		5:16		6:16	

### Caltrain Departures from Menlo Park

Shuttle Connection	To San Jose	To San Francisco
Run 1 Arr. 3:44	#156: 3:56	#159: 3:51
Run 2 Arr. 4:12	#258: 4:22	#261: 4:19
Run 3 Arr. 4:40	---	#365: 4:47 #267: 4:57
Run 4 Arr. 5:16	#264: 5:34 #268: 5:39	#269: 5:23
Run 5 Arr. 5:36	---	#375: 5:43 #277: 5:57
Run 6 Arr. 6:16	#274: 6:34 #278: 6:39	#279: 6:23
Run 7 Arr. 6:36	---	#385: 6:43 #287: 7:04



**3715 HAVEN AVE.**  
MENLO PARK | CALIFORNIA

**MARK DASCHBACH**  
Executive Managing Director  
650.688.8540  
mdaschbach@ngkf.com  
CA RE License #00871922

**JOHN MCKENNA**  
Senior Managing Director  
650.688.8548  
jmckenna@ngkf.com  
CA RE License #01276576

[www.ngkf.com](http://www.ngkf.com)

The information contained herein has been obtained from sources deemed reliable but has not been verified and no guarantee, warranty or representation, either express or implied, is made with respect to such information. Terms of sale or lease and availability are subject to change or withdrawal without notice. 18-0833.06/18



3715 HAVEN AVENUE, MENLO PARK