

Fremont Plaza

Mowry Avenue and State Street
Fremont CA



Fremont Place is dynamically situated at the entrance to the Fremont Downtown District. The Downtown District is a perfect destination for retailers given the proximity to the following:

Fremont Bart Station

Washington, Kaiser & Palo Alto Centers/ Hospitals (5000 emp)

The Major Retail Shopping/Entertainment District

City Hall (1,000+/- emp)

New Arts District

Over 20,000 employees in a one mile radius


RETAIL PACIFIC

Carol Therien

carol@retailpacific.com

925.256.4555

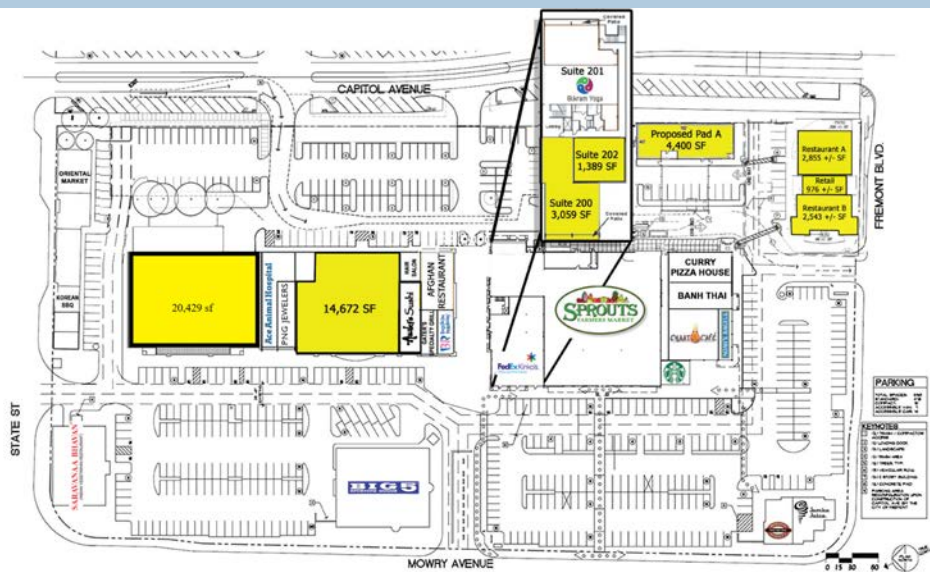
Amy Hopkins

amy@retailpacific.com

925.708.8621

www.retailpacific.com

00909068/01187071

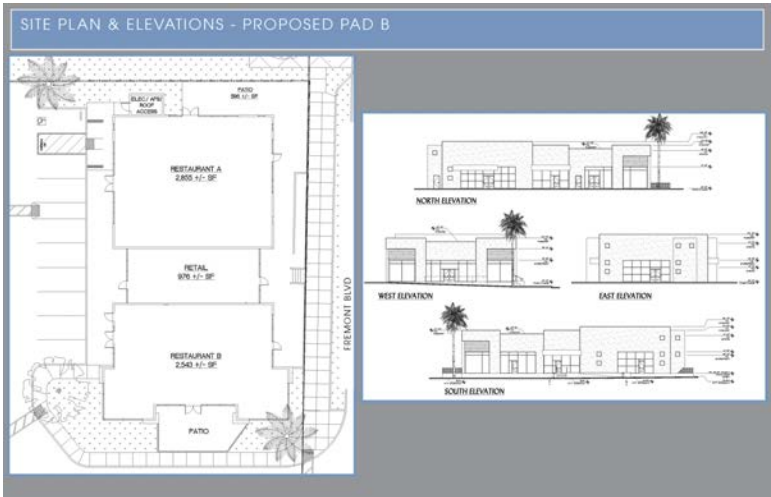


For Lease:

Anchor space:	20,479 sq ft
Junior anchor space:	14,672 sq ft
Suite 200:	3,059 sq ft
Suite 202:	1,389 sq ft
Proposed pad A:	4,400 sq ft
Restaurant A:	2,855 +/- sq ft
Fremont Blvd retail space:	976 +/- sq ft
Restaurant B:	2,543 +/- sq ft

Pad Opportunity

This highly anticipated pad building will have great visibility and access from Fremont Blvd.



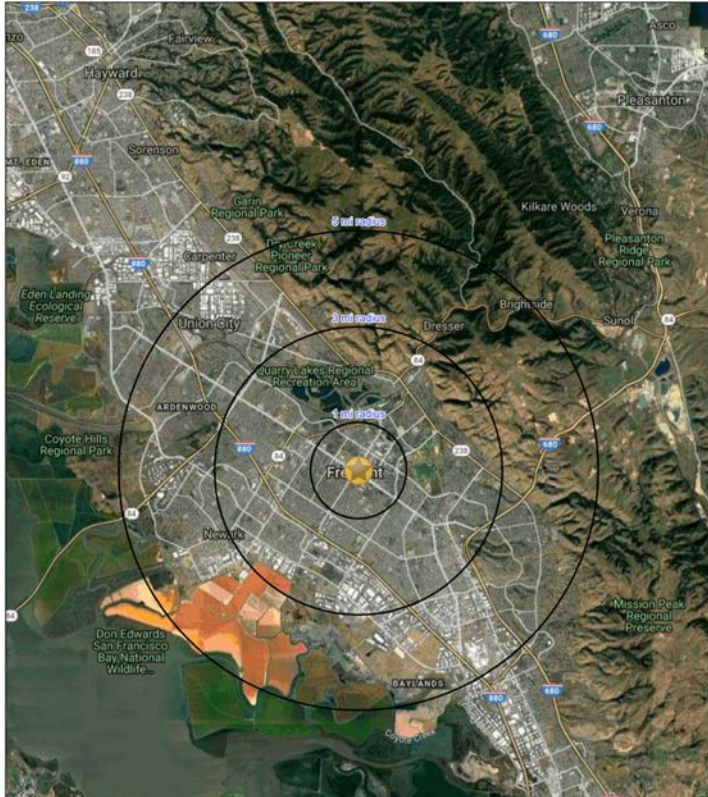
Area Retailers



Regional Retailers



Demographics



	<u>1 mi</u>	<u>3 mi</u>	<u>5 mi</u>
Population	40,348	193,628	317,300
Average HH Income	\$143,303	\$149,509	\$154,709
Per Capita Income	\$51,037	\$50,127	\$50,172
College Degree +	58.0%	51.0%	51.1%
Daytime Employment	21,867	58,707	124,137