

FOR LEASE

1009 Monroe Avenue
Enumclaw, WA 98022



ENUMCLAW MARKET SQUARE

Lisa Tallman

First Western Properties—Tacoma Inc. | 253.472.0404
6402 Tacoma Mall Blvd, Tacoma, WA 98409 | fwp-inc.com

1009 MONROE AVENUE:

1,535 +/- SF \$16.00 PSF \$3.60 NNN (ESTIMATE)

- This great location is anchored by QFC and other tenants including Chase Bank, Hair Masters, Pinnacle Physical Therapy, Verizon Wireless, and more!
- Located in the heart of the Enumclaw Market!



COMING SOON!



Population



Average HH Income

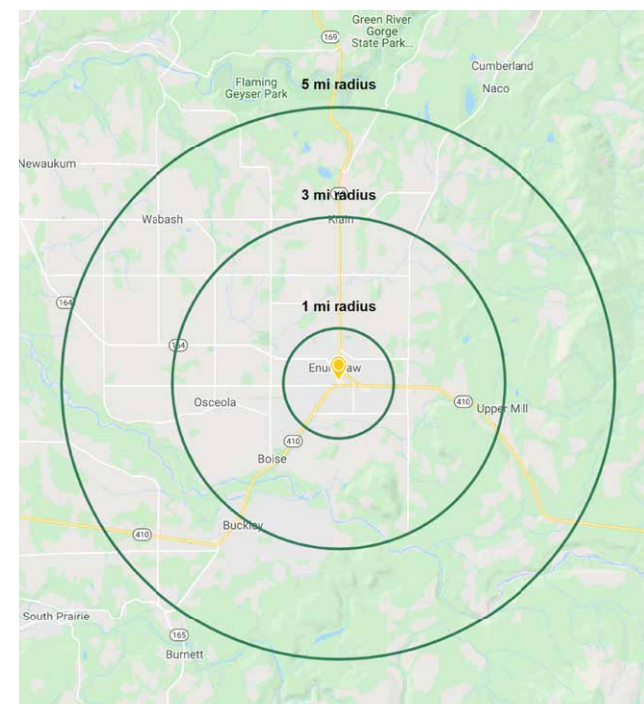
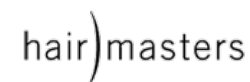


Daytime Population

Regis - 2019

	Population	Average HH Income	Daytime Population
Mile 1	9,280	\$82,189	7,475
Mile 3	17,614	\$90,211	14,219
Mile 5	26,877	\$98,200	21,722

NEARBY TENANTS



LOCATION DETAILS



Located directly next to
Highway 410



Located in the
Enumclaw retail core



13,130 CPD
HWY 410



3,000 CPD
Stevenson Ave

SITEPLAN



TACOMA | KIRKLAND | PORTLAND

RELATIONSHIP FOCUSED. RESULTS DRIVEN.

LISA TALLMAN

253.471.5504

lisa@firstwesternproperties.com



First Western Properties—Tacoma Inc. | 253.472.0404
6402 Tacoma Mall Blvd, Tacoma, WA 98409 | fwp-inc.com

© First Western Properties, Inc. DISCLAIMER: The above information has been secured from sources believed to be reliable, however, no representations are made to its accuracy. Prospective tenants or buyers should consult their professional advisors and conduct their own independent investigation. Properties are subject to change in price and/or availability without notice.