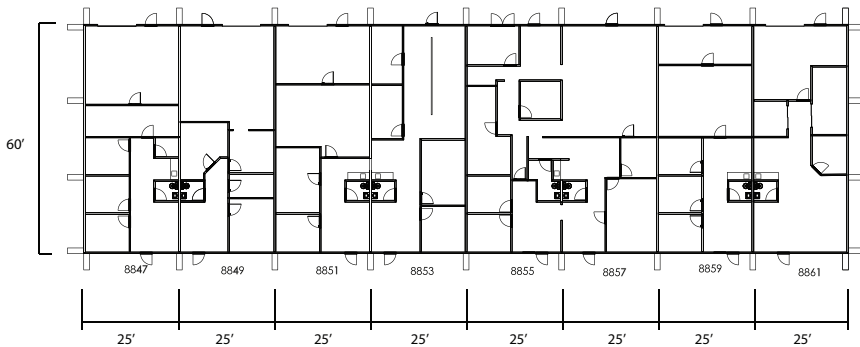




MATHER REAL ESTATE

This property is located at:
8847-61 Long Street
Lenexa, KS 66215



FOR LEASE

Parkway Plaza II Office/Warehouse:

- On Lenexa's Connective Corridor
- 12,000 sq ft building
- 1,500 sq ft each bay
- Finished warehouse
- All temperature controlled
- Updated interior
- 8' x 10' OH drive-in door
- Approximate driving times

15 min. to Downtown
12 min. to Olathe Courthouse
2 min. to I-35 or 435



For information contact:

MATHER REAL ESTATE | **Sharon McLaughlin, Broker**

(o) 913 469-4040 ext 112 (c) 913 927-1418

(e) sharonm@matherco.com

