

# 88 TULLY ROAD, UNIT 109

SAN JOSE, CA 95111

## AVAILABLE:

Suite 109: ±1,250 SF

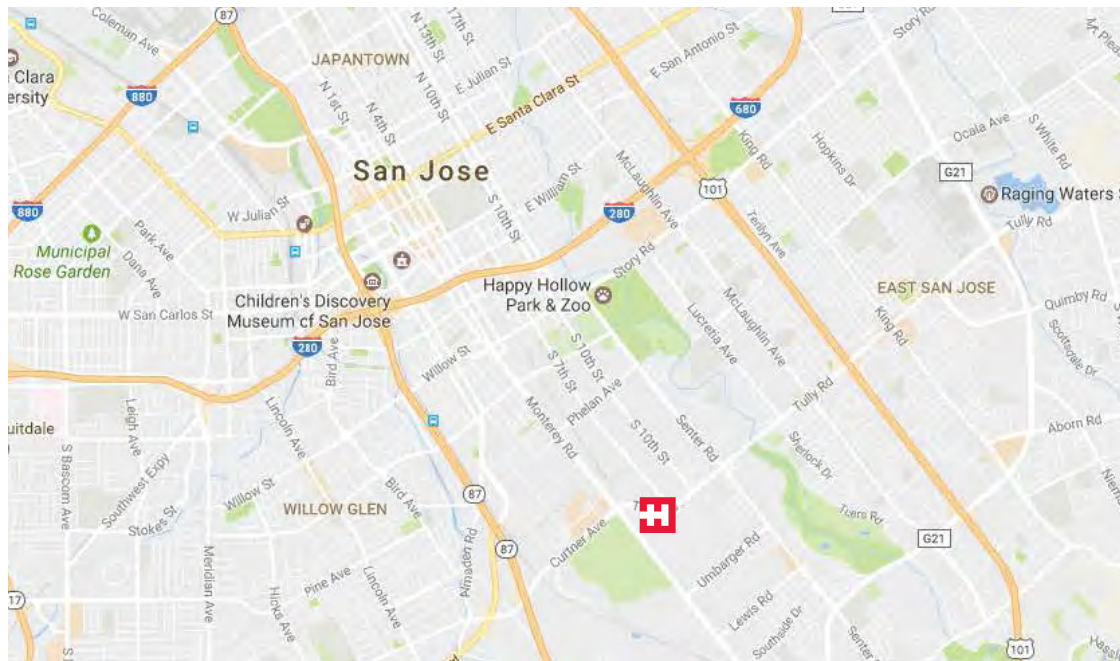
## ASKING RENT:

\$2.65 PSF NNN

## SALE PRICE:

\$625,000

*Tour by appointment only*



For Further Information,  
Please Contact:

**Christina Yang**  
408-457-8805  
christina@healthmedrealty.com  
Lic. 01862052

## FEATURES:

- » Fully plumbed dental office with 4 operatories (2 of the 4 ops are equipped with chairs and cabinetry)
- » Perfect for a start-up dentist or a second location practice
- » Close to Communication Hills Neighborhood and Community
- » Walk to various amenities at The Plant Shopping Center
- » Easy access to freeway 87 and 280, and Monterey Hwy
- » Call to tour!



**HealthMedRealty**

**HealthMed Realty**  
690 Saratoga Avenue  
Suite 200  
San Jose, CA 95129  
408.217.6000 T  
408.457.8803 F  
www.healthmedrealty.com  
Lic. 01902032

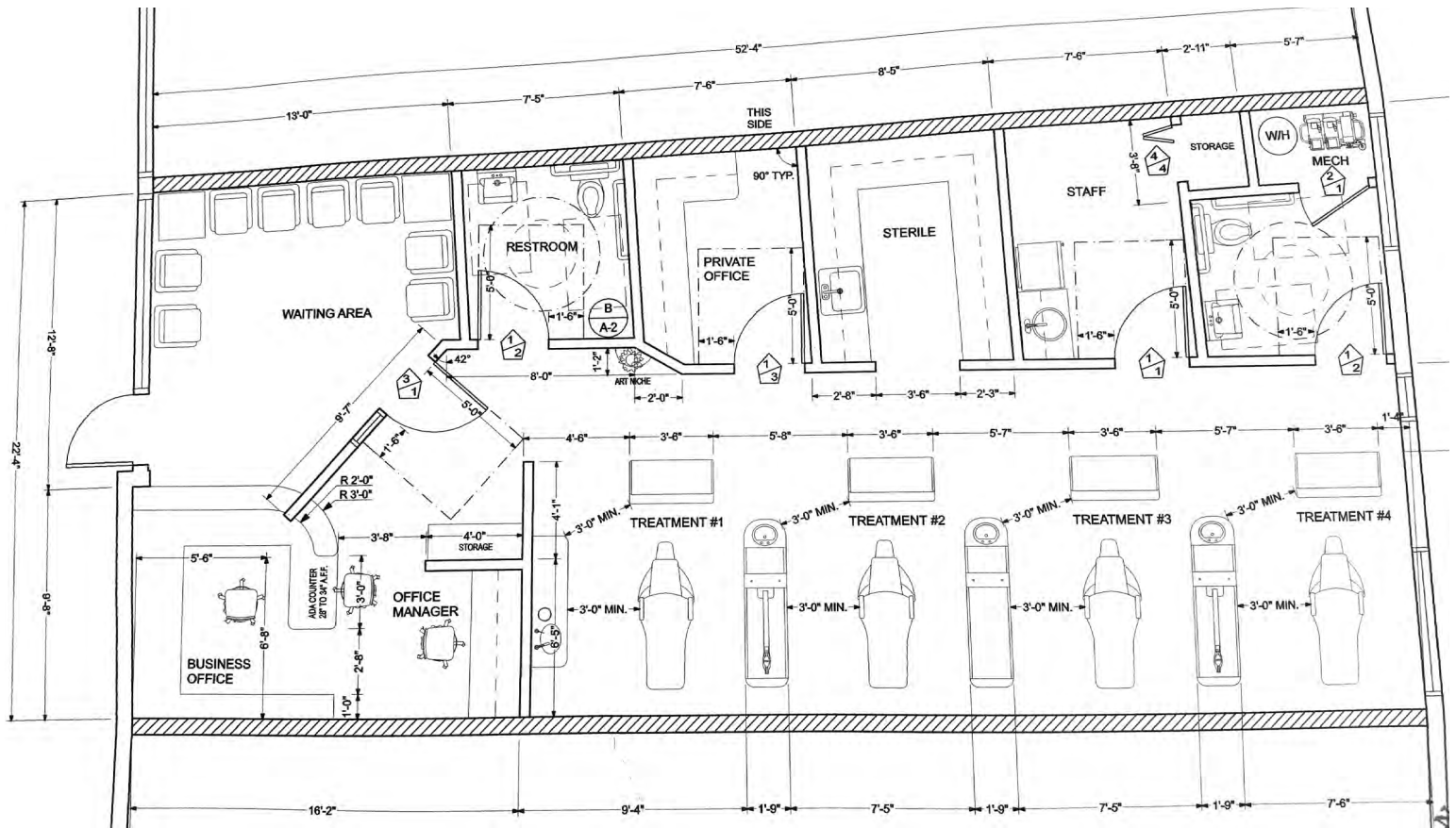
No warranty or representation, express or implied is made as to the accuracy of the information contained herein, and the same is submitted subject to errors, omissions, changes of price, rental or other conditions, withdrawal without notice.



# 88 TULLY ROAD, UNIT 109

SAN JOSE, CA 95111

Suite 109: ±1,250 SF



For Further Information,  
Please Contact:

**Christina Yang**  
408-457-8805  
christina@healthmedrealty.com  
Lic. 01862052

**HealthMed Realty**  
690 Saratoga Avenue  
Suite 200  
San Jose, CA 95129  
408.217.6000 T  
408.457.8803 F  
www.healthmedrealty.com  
Lic. 01902032