



# BENZ COMMERCIAL LAND

## East Sioux Falls

### 2 Acres for Sale on Arrowhead Parkway



7401 East Arrowhead Parkway  
Sioux Falls, SD 57110



size

2.08 acres



price

\$434,903



zoning

Commercial



location

Property is located on East Arrowhead Parkway, between Highway 100 and Six Mile Road.



access

A new Arrowhead Parkway is planned to be constructed north of the site in 2021. Site will have a service road running parallel along the south side of Arrowhead Parkway.



co-tenancy

Alibi Bar & Grill, Uncle Ed's Specialty Meats, Roger's Plumbing & Heating, Green 4 Ever, Jay Egge Automatic Service, Arrowhead Automotive, Willow Run Golf Course, Menards

Information deemed reliable but not guaranteed.



Lake Lorraine | 2571 S. Westlake Drive #100  
Sioux Falls, South Dakota 57106  
VBCLink.com | 605.361.8211



605.376.0127  
Ryan@VBCLink.com



# AERIAL MAP



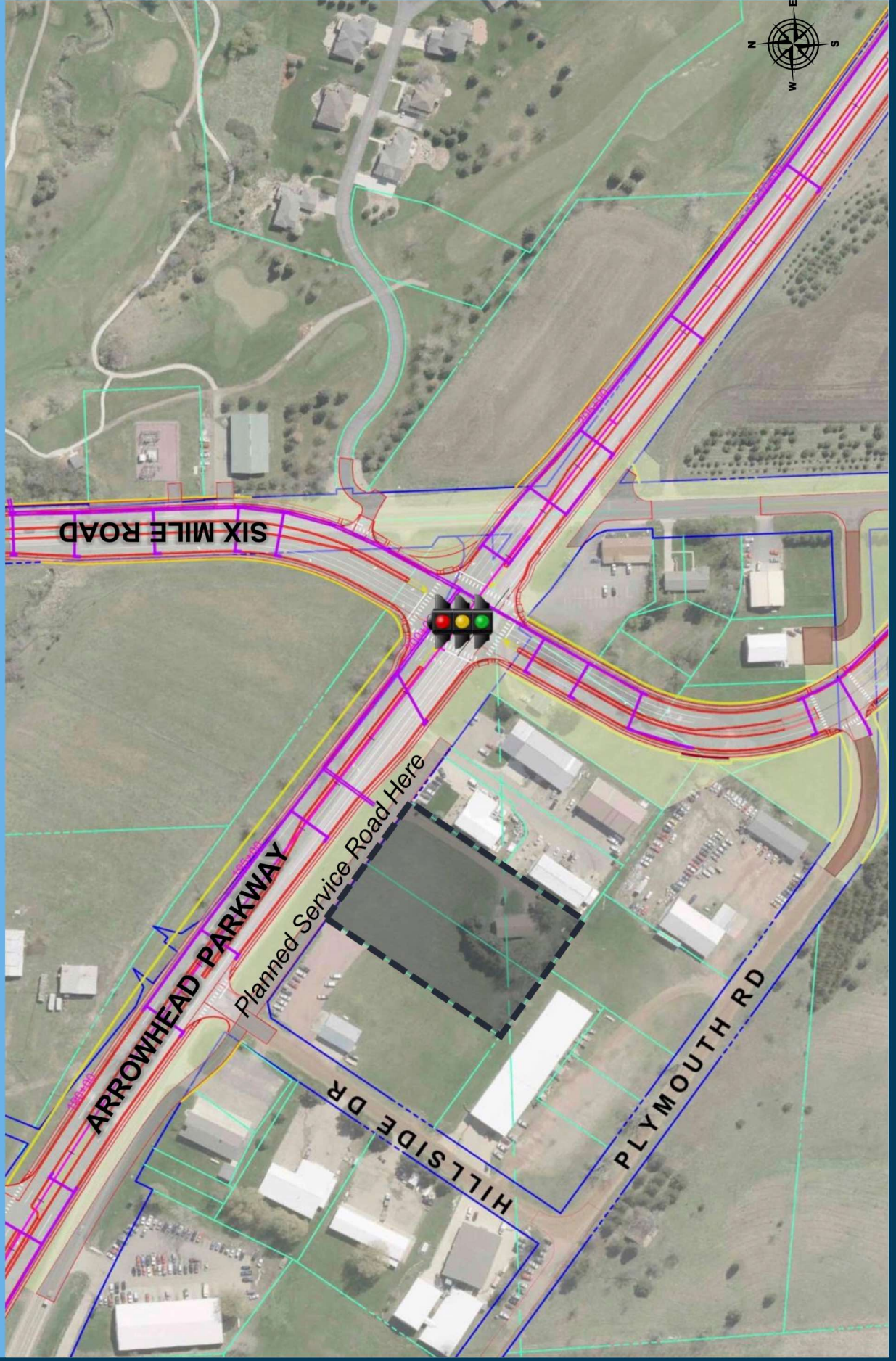


# PARCEL MAP





# PROPOSED ARROWHEAD PARKWAY DESIGN





# PROPERTY PHOTOS

