

ONE HUNDRED WILSHIRE BLVD
FOR LEASE

100 WILSHIRE

ERIC OLOFSON, II

CA Lic 00901159
+1 310 595 2216

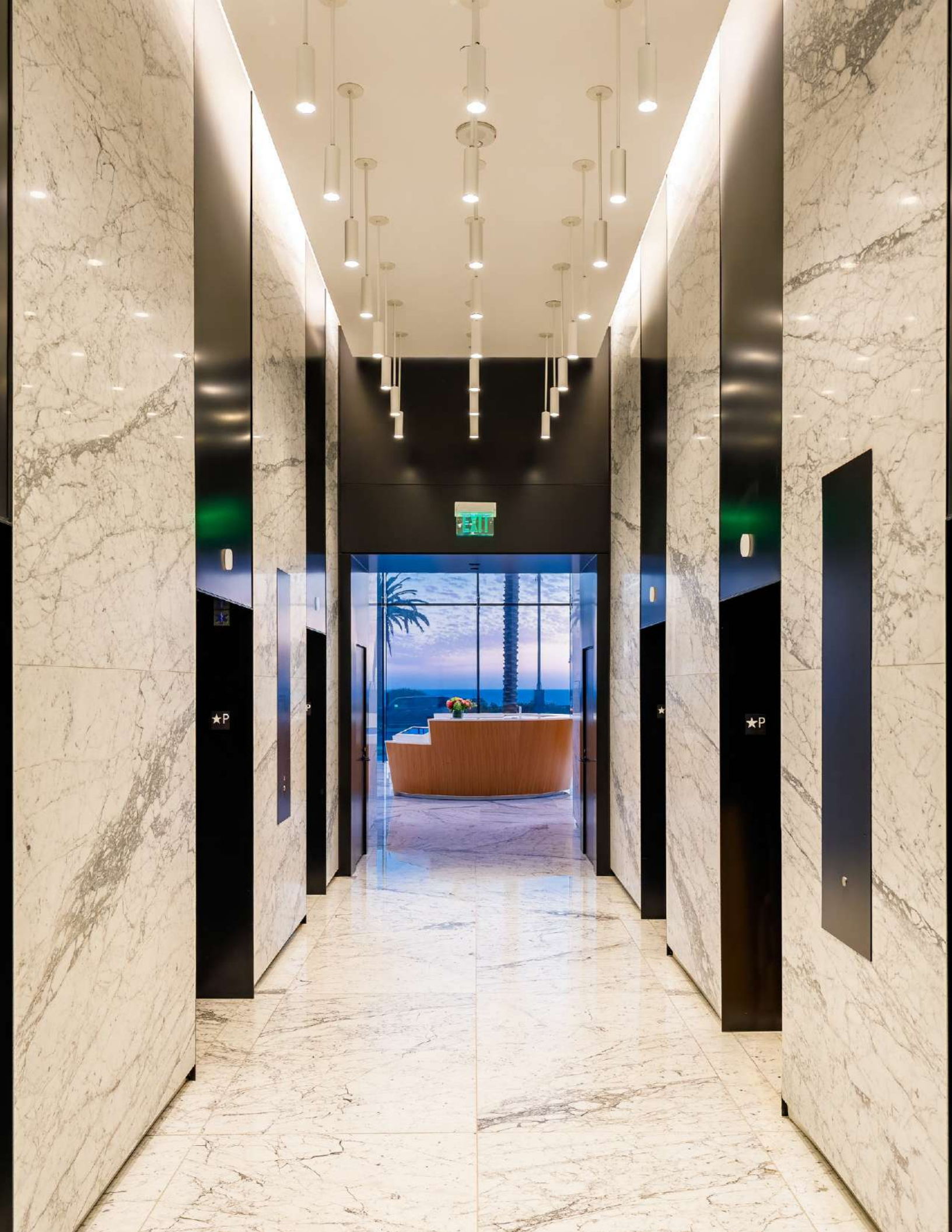
eric.olofson@cushwake.com

SCOTT MENKUS

CA Lic 01476553
+1 310 595 2211

scott.menkus@cushwake.com

 **CUSHMAN &
WAKEFIELD**
CUSHMANWAKEFIELD.COM



EXIT

★P

★P

100

WILSHIRE BLVD
SANTA MONICA

AVAILABLE SF	SIZE	OCCUPANCY
SUITE 400	12,291 RSF	IMMEDIATE: DIVISIBLE
SUITE 940	5,042 RSF	IMMEDIATE
SUITE 1753	1,815 RSF	IMMEDIATE
SUITE 1760	1,116 RSF	IMMEDIATE
SUITE 1845	2,753 RSF	IMMEDIATE
SUITE 2060	878 RSF	IMMEDIATE
SUITE 2075	659 RSF	IMMEDIATE
SUITE 2100	12,275 RSF	08/01/21

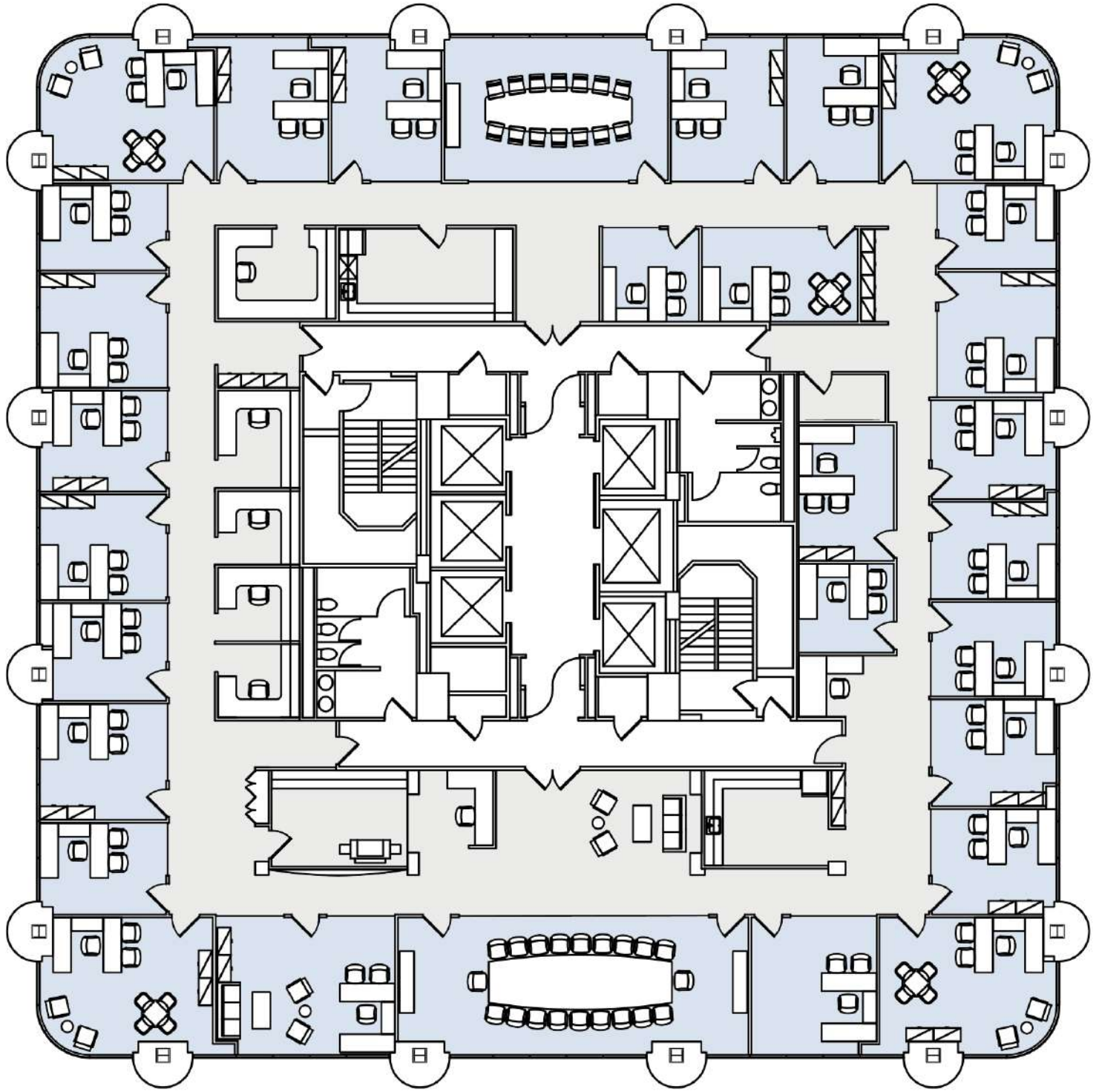
PROPERTY HIGHLIGHTS

100 Wilshire Boulevard is Santa Monica's only high rise office tower featuring unobstructed views of the Pacific Ocean, the Santa Monica Mountains and the Westside.

Located within walking distance to the 3rd Street Promenade, Palisades Park, the Santa Monica Pier and numerous restaurants, hotels, and entertainment amenities. 100 Wilshire is Southern California's preeminent office address and now features a freshly renovated lobby, elevators and landscaping.

100
WILSHIRE BLVD
SANTA MONICA

SUITE 400: DIVISIBLE
AVAIL IMMEDIATELY
12,291 RSF



WILSHIRE BLVD

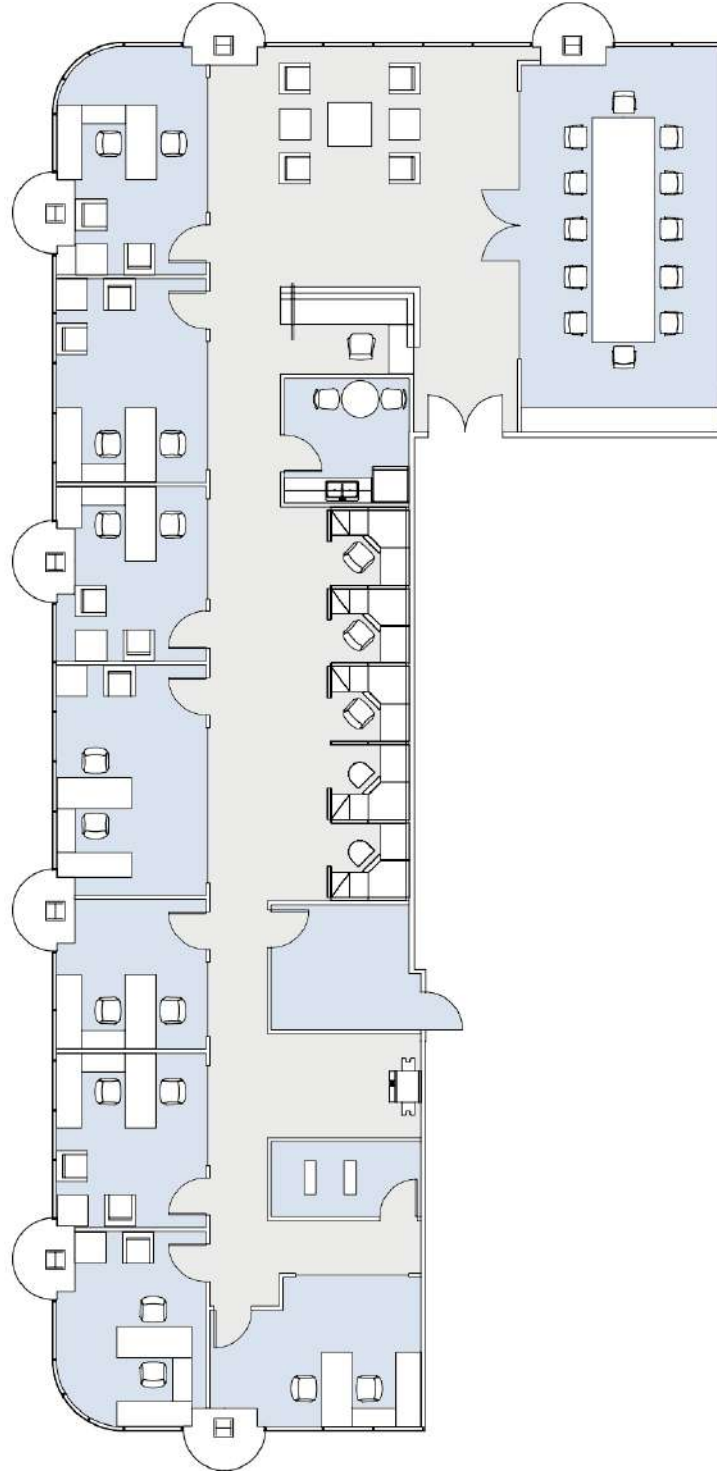
■ OCEAN AVE

←N

SUITE 940
AVAIL IMMEDIATELY
5,042 RSF

100
WILSHIRE BLVD
SANTA MONICA

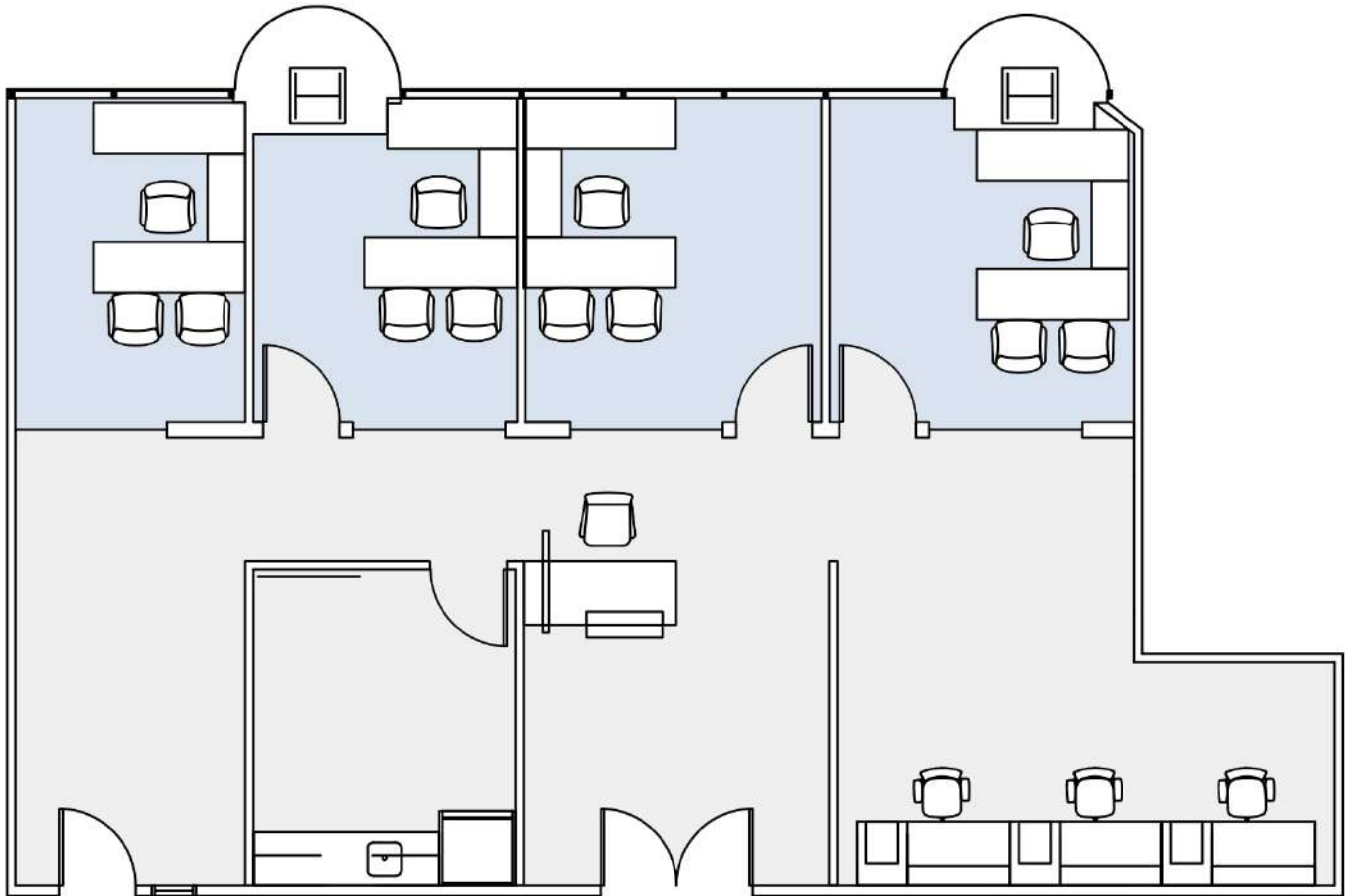
OCEAN AVE



N →

100
WILSHIRE BLVD
SANTA MONICA

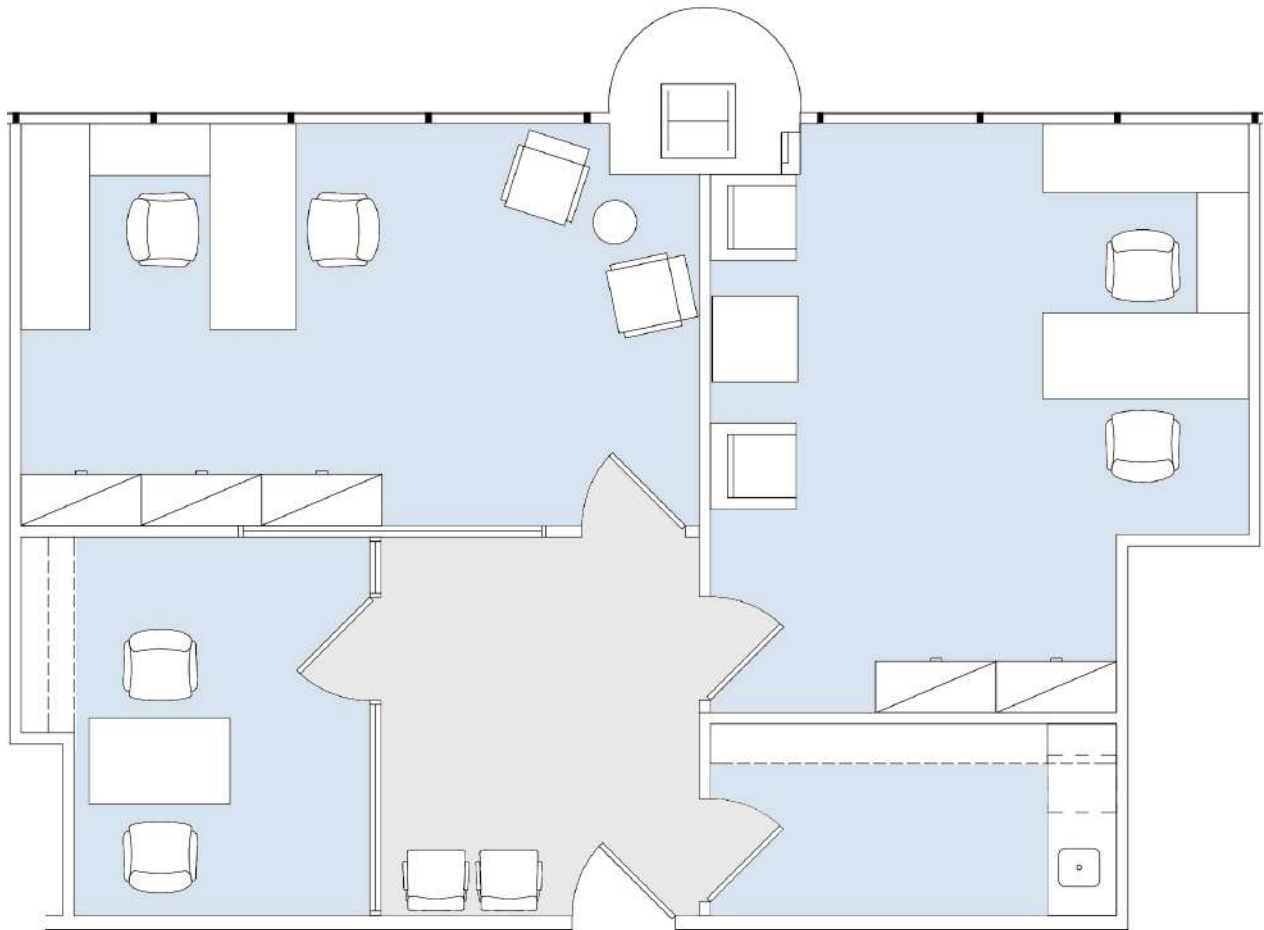
SUITE 1753
AVAIL IMMEDIATELY
1,815 RSF



←N

SUITE 1760
AVAIL IMMEDIATELY
1,116 RSF

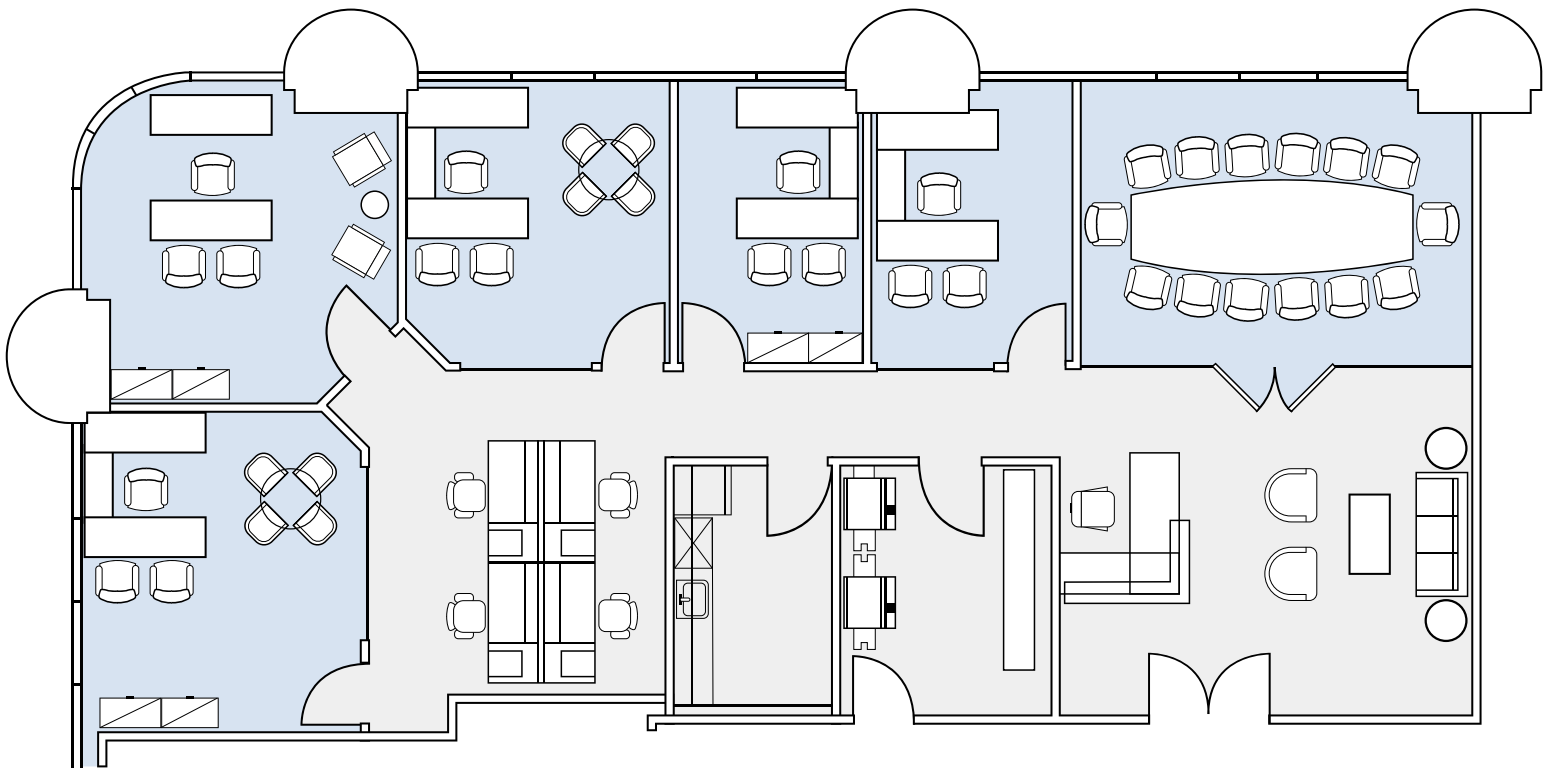
100
WILSHIRE BLVD
SANTA MONICA



↓ N

100
WILSHIRE BLVD
SANTA MONICA

SUITE 1845
AVAIL IMMEDIATELY
2,753 RSF

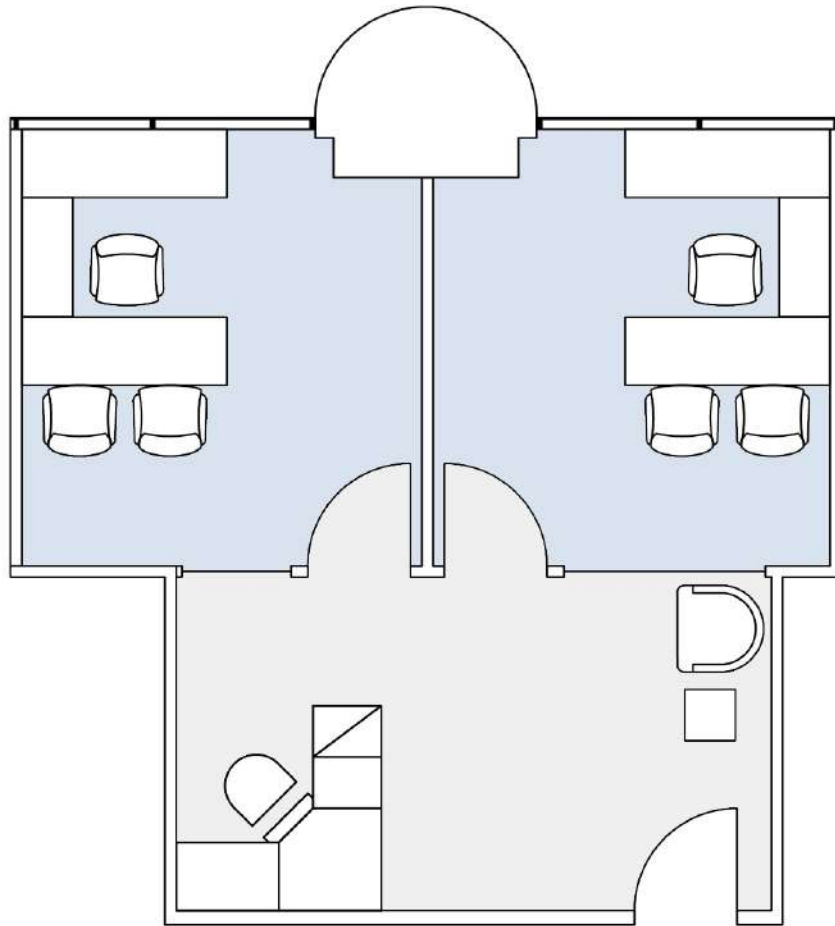


←N

SUITE 2075
AVAIL IMMEDIATELY
659 RSF

100
WILSHIRE BLVD
SANTA MONICA

- SUITE 2075 AND SUITE 2060
CAN BE COMBINED FOR
A TOTAL OF 1,537 RSF

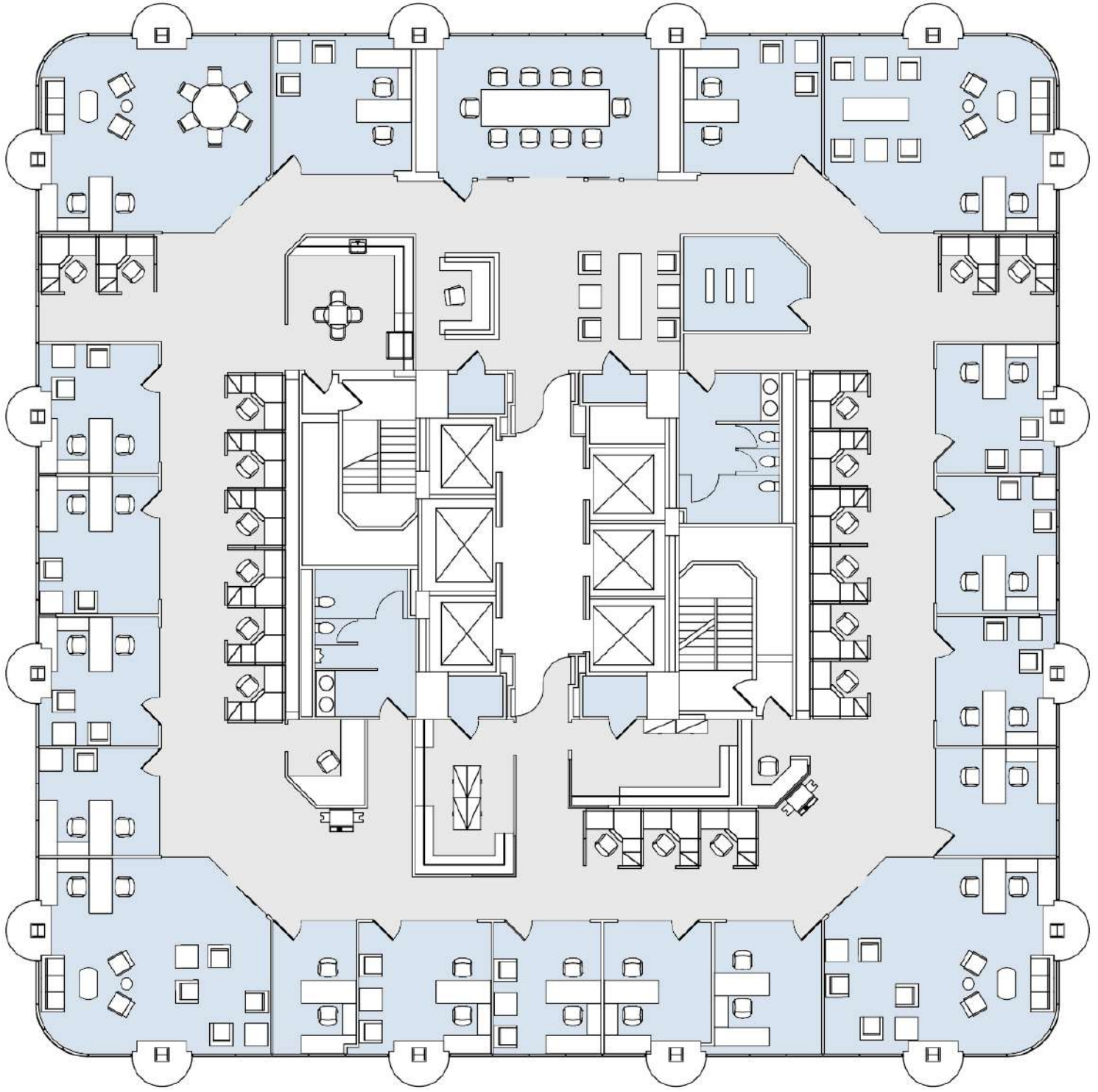


↓ N

100
WILSHIRE BLVD
SANTA MONICA

SUITE 2100
AVAIL 08/01/21

12,275 RSF



WILSHIRE BLVD

■ OCEAN AVE









AMENITIES

- 1 **100 WILSHIRE BLVD**
- 2 PALIHOUSE
- 3 THE HUNTLEY HOTEL
- 4 FAIRMONT HOTEL
- 5 THE BUNGALOW
- 6 SOUL CYCLE
- 7 HILLSTONE
- 8 WALLY'S SANTA MONICA
- 9 TENDER GREENS
- 10 SANTA MONICA FARMER'S MARKET
- 11 HOTEL SHANGRI-LA
- 12 ELEPHANTE
- 13 SUGAR FISH
- 14 THE MISFIT
- 15 BLUE PLATE OYSTERETTE
- 16 BOA STEAKHOUSE
- 17 SUSHI ROKU
- 18 WATERGRILL
- 19 THE CRAFTSMAN
- 20 BLUE PLATE TACO
- 21 SHORE HOTEL
- 22 SANTA MONICA PIER
- 23 MERCADO
- 24 SANTA MONICA PLACE
- 25 FRITTO MISTO
- 26 UMAMI BURGER
- 27 PHILZ COFFEE
- 28 CASSIA
- 29 BODEGA WINE BAR





BLUE PLATE TACO



THE HUNTLEY HOTEL



TENDER GREENS



ELEPHANTE



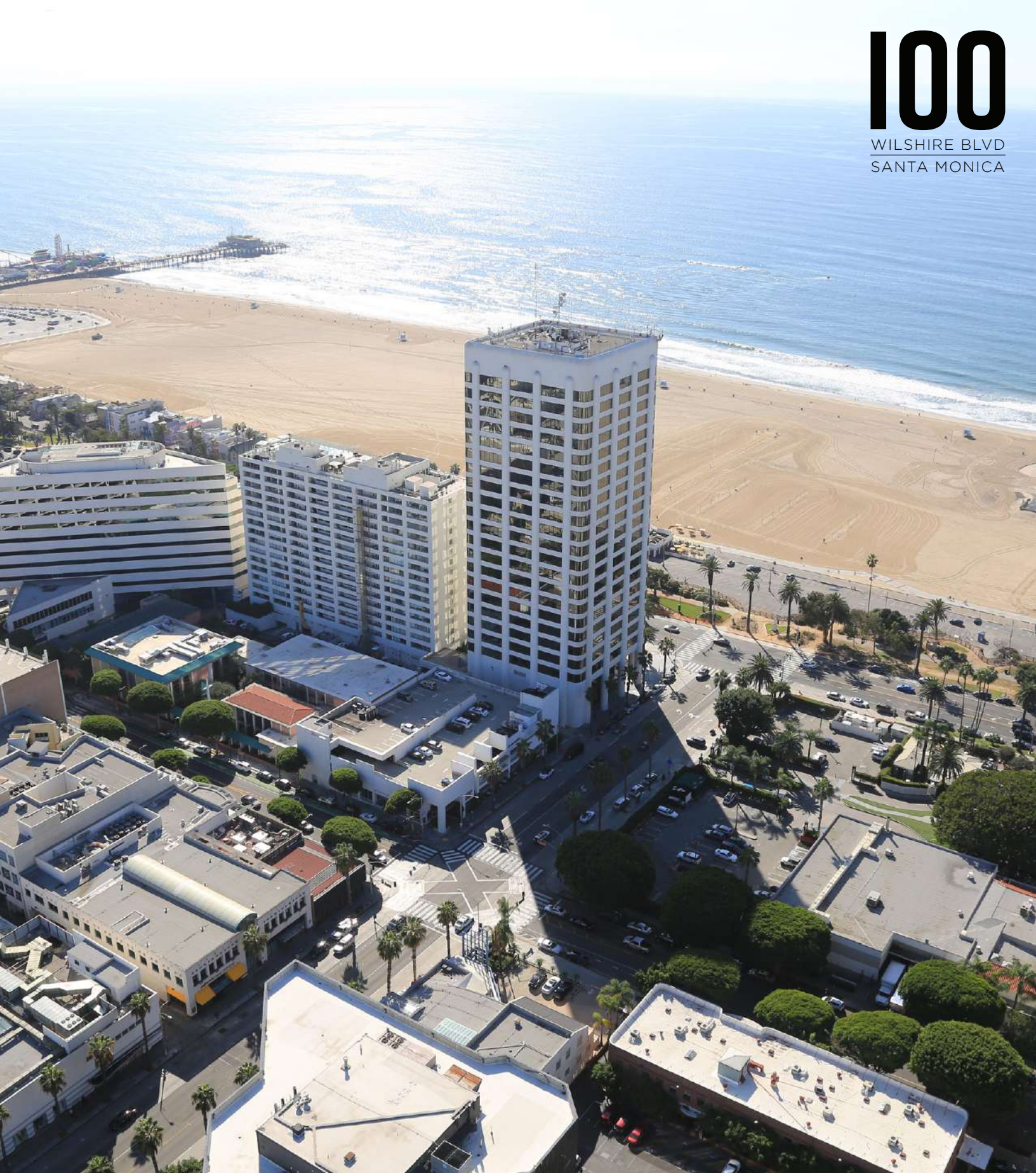
THE BUNGALOW



WATERGRILL

100

WILSHIRE BLVD
SANTA MONICA



ERIC OLOFSON, II
CA Lic 00901159
+1 310 595 2216
eric.olofson@cushwake.com

SCOTT MENKUS
CA Lic 01476553
+1 310 595 2211
scott.menkus@cushwake.com



[View Site Specific COVID-19 Prevention Plan](#)