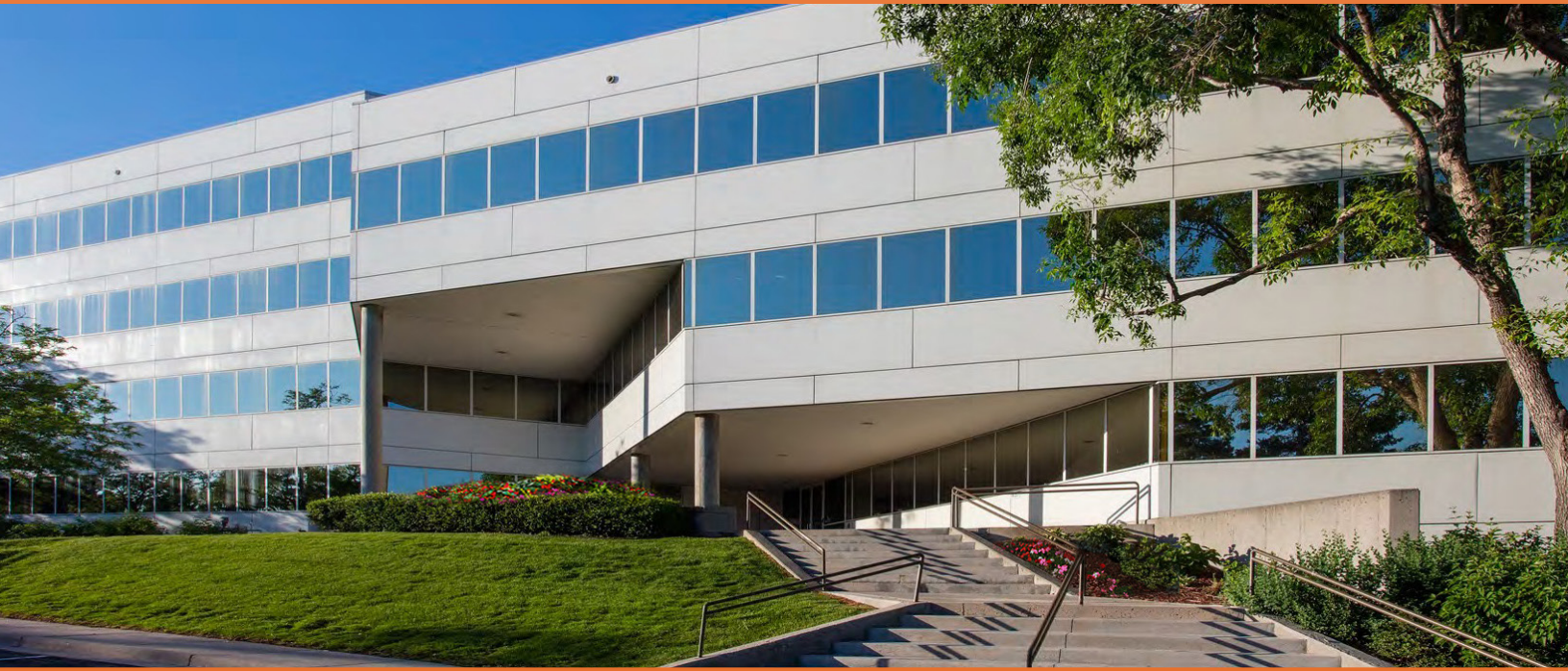


Panorama Point

9200 E Mineral Avenue, Centennial, CO 80112

GREAT LOCATION IN PANORAMA PARK



PROPERTY HIGHLIGHTS

- Located in Panorama Park, home to major facilities for Comcast, ULA, Travelport, Cisco, Arrow, Centura Health and RingCentral.
- Convenient access to I-25 and Dry Creek light rail station.
- On-site cafe and conferencing center.
- Executive covered parking.
- Beautiful mountain views.
- Roof top patio.



For leasing information please contact:

Matt Smith | 303.996.8460
msmith@premisescommercial.com

Johnny Neff | 720.743.6399
jneff@premisescommercial.com

PREMISES
PREMISES COMMERCIAL REAL ESTATE, LLC
WWW.PREMISESCOMMERCIAL.COM

Panorama Point

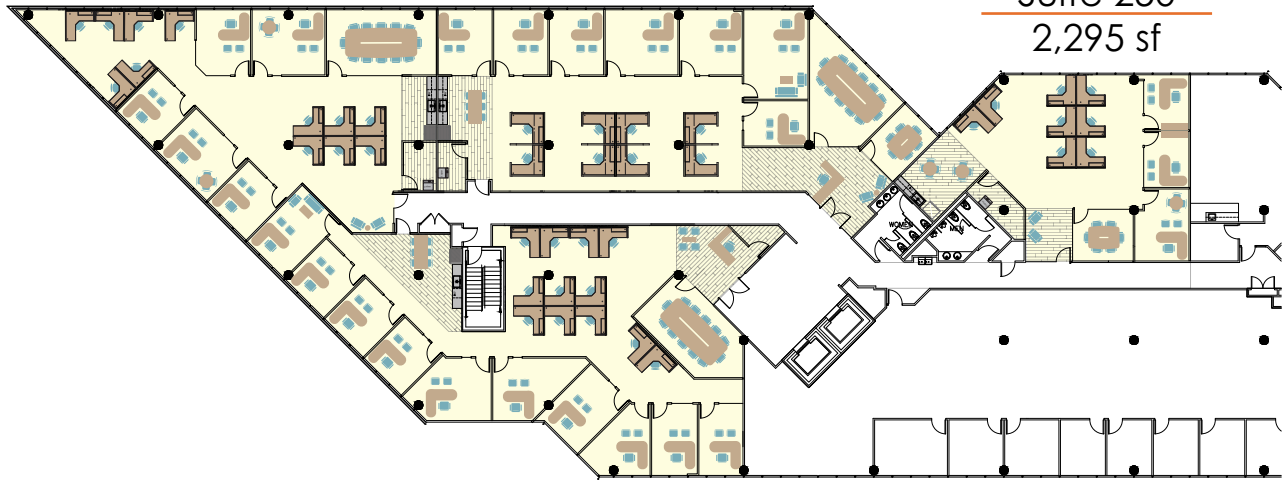
9200 E Mineral Avenue, Centennial, CO 80112

AVAILABLE SUITES

Suite 230
3,537 sf

Suite 240
4,449 sf

Suite 250
2,295 sf

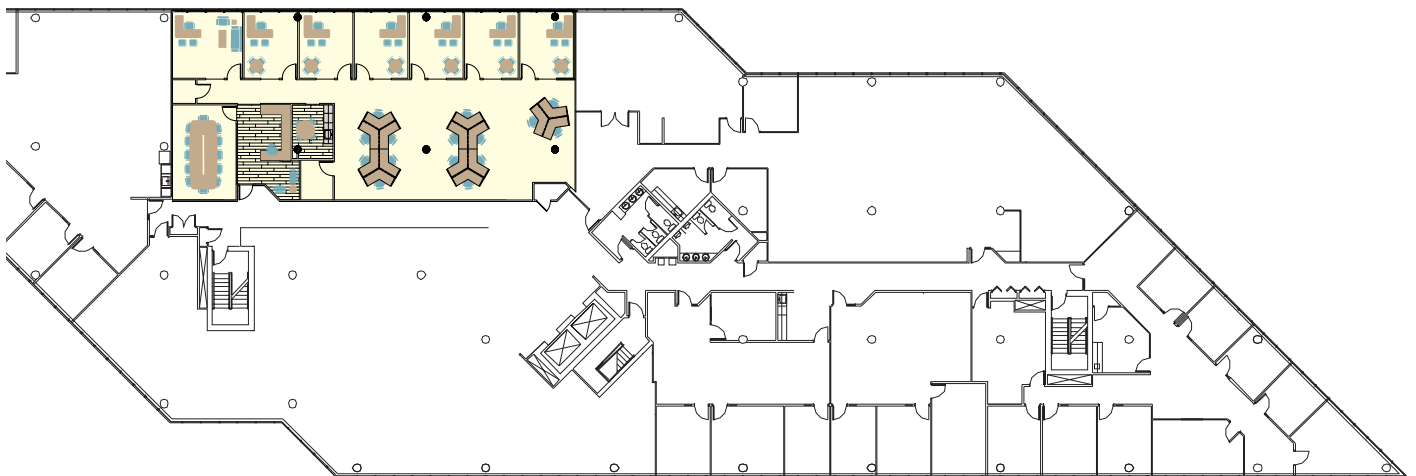


Suite 220
4,672 sf

Second Floor

Third Floor

Suite 355
4,158 sf



WWW.PREMISESCOMMERCIAL.COM

The information contained herein, while not guaranteed, has been secured from sources we believe to be reliable. Different brokerage relationships are available which include Seller/Landlord Agency, Buyer/Tenant Agency and Transaction Broker. Premises Commercial Real Estate, LLC is acting in this capacity as Landlord's/Sublessor's Agent, unless otherwise agreed, and owes its fiduciary allegiance to Landlord/Sublessor as defined by Colorado Real Estate Commission.