

Lincolnshire SQUARE

Available for Lease

1500 South 70th Street, Suite 103
Lincoln, Nebraska 68506



Property Type: Office

Available: Immediate

Square Feet: 508 Sq. Ft.

Building Size: 9,040 Sq. Ft.

Lease Rate: \$13.50 per Sq. Ft. (Modified Gross)

Year Built: 1984

Construction: Brick

Zoning: O3-Office Park District

Parking: 4 stalls per 1,000 Sq. Ft.

Cross Streets: 70th & A Streets

Additional Information

Office space located at Lincolnshire Square in Lincoln's prosperous east side. Surrounded by beautiful landscaping and mature trees on the corner of 70th and A streets, Lincolnshire Square is an ideal location for businesses looking for small-community feel with big city visibility. There is ample, front-door parking and easy access to I-80, hospitals, shopping, dining and entertainment.

Population: 86,774

Households: 37,739

Average HH Income: \$71,449 (2013)

**Demographics are based on a 3-mile radius
Source: U.S. Census Bureau, Census 2010 Data*



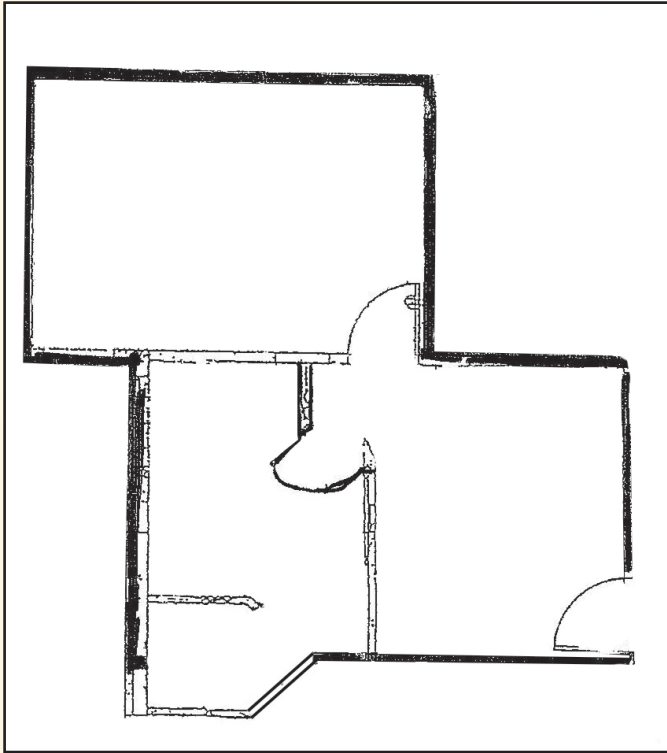
Contact our team today to discover the space for you.

Call 402-489-8858 to learn more about Williamsburg Village.

Hampton Enterprises, Inc. 3400 Planatation Drive, Suite 110 • Lincoln, NE 68516 • hampton1.com

1500 South 70th Street, Suite 103
Lincoln, Nebraska 68506

Floor Plan



248 SF

For more information, please contact

Michelle Keogh, Broker
President of Properties
Office (402) 489-8858
mkeogh@hampton1.com



With more than six decades of experience and an attentive, professional team, Hampton Realty can act as trusted resource when you are looking for space. We are here every step of the way and beyond. Hampton Realty provides tenant finish - working alongside our partner company, Hampton Commercial Construction, Inc., we will work closely with you to make your space reflect your vision and personality, and we also provide all the property maintenance for the spaces we lease. From the moment you reach us you will become part of our circle. You will receive exceptional service with a team that welcoming, caring, and engaging.

