

FOR LEASE > CLASS A OFFICE SPACE



Everett Mall Office Park I

1010 EVERETT MALL WAY, EVERETT, WA 98208



Available Space

- > Suite 206: 1,080 SF
- > Suite 209: 1,214 SF
- > Suite 204: 1,218 SF
- > Suite 207: 2,048 SF (Available 1/1/2016)
- > Suite 211: 2,183 SF
- > Suite 209/211: 3,397 SF
- > Suite 100: 3,753 SF
- > Suite 102: 8,543 SF (Available 1/1/2016)

Features

- > Prime location with excellent access to I-5
- > Available immediately
- > 4.0 Parking stalls/1,000 SF
- > Class A build-out

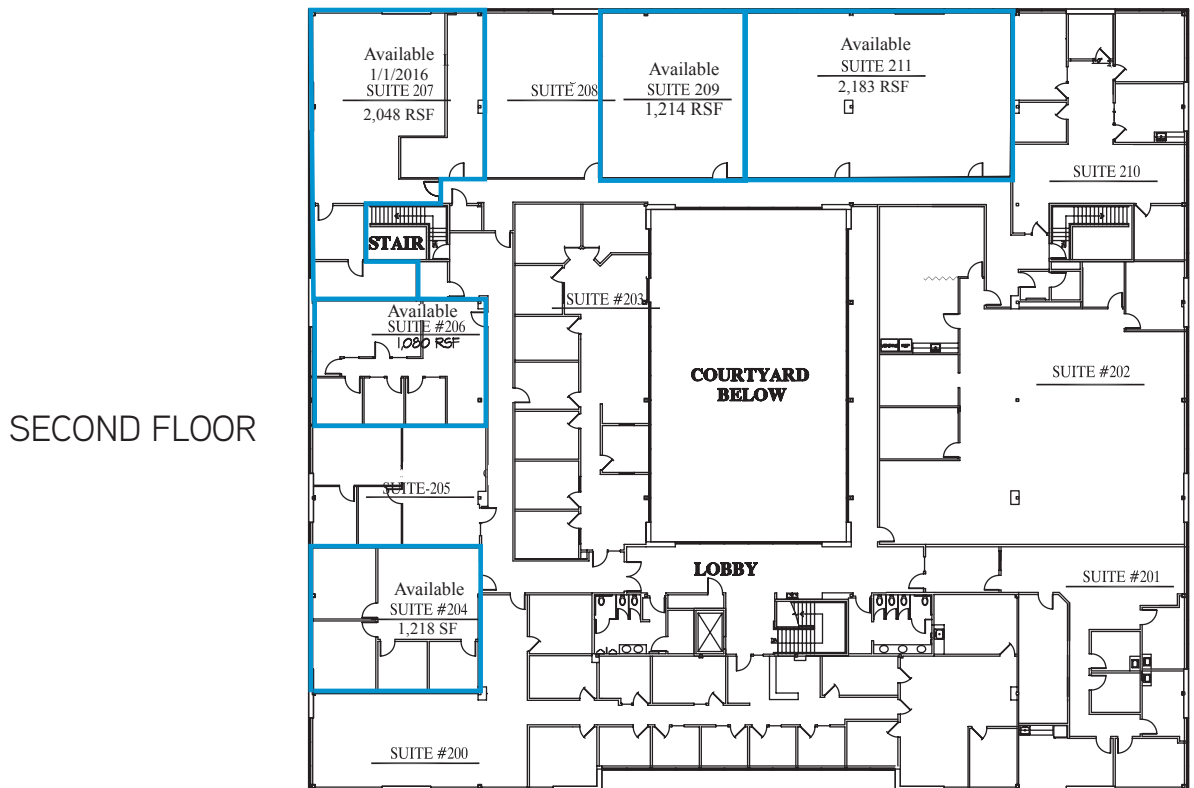
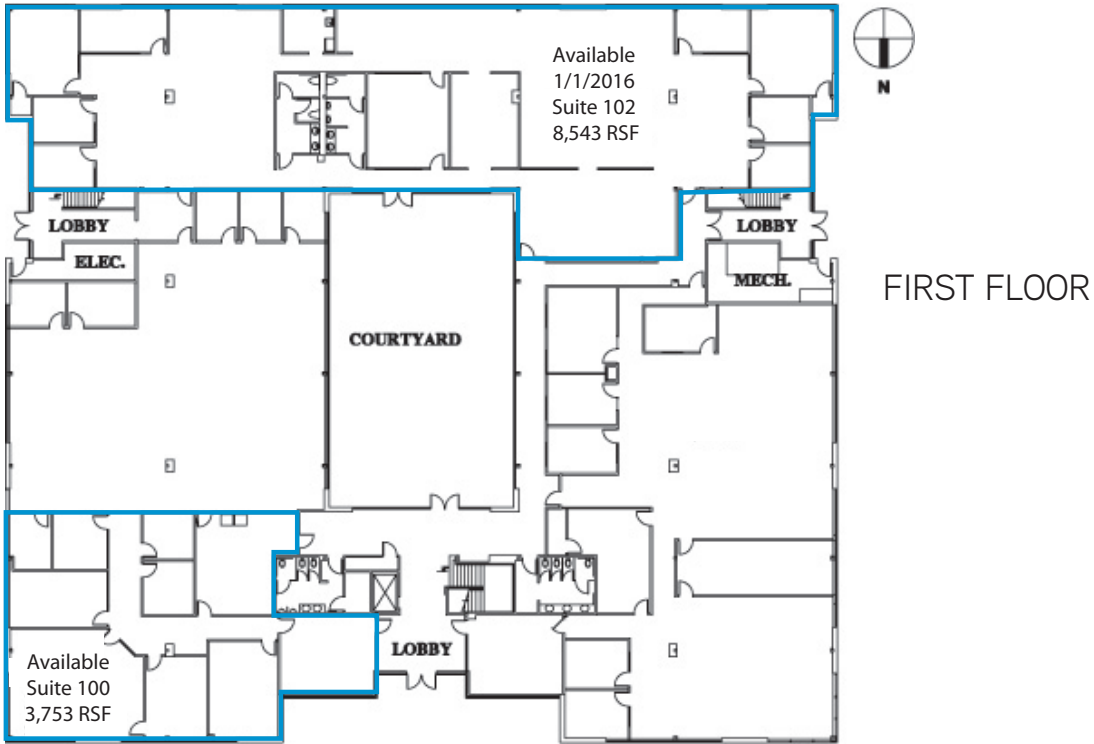
Rate

- > \$15.00/SF, NNN

DEREK HEED
425 453 3133
BELLEVUE, WA
derek.heed@colliers.com

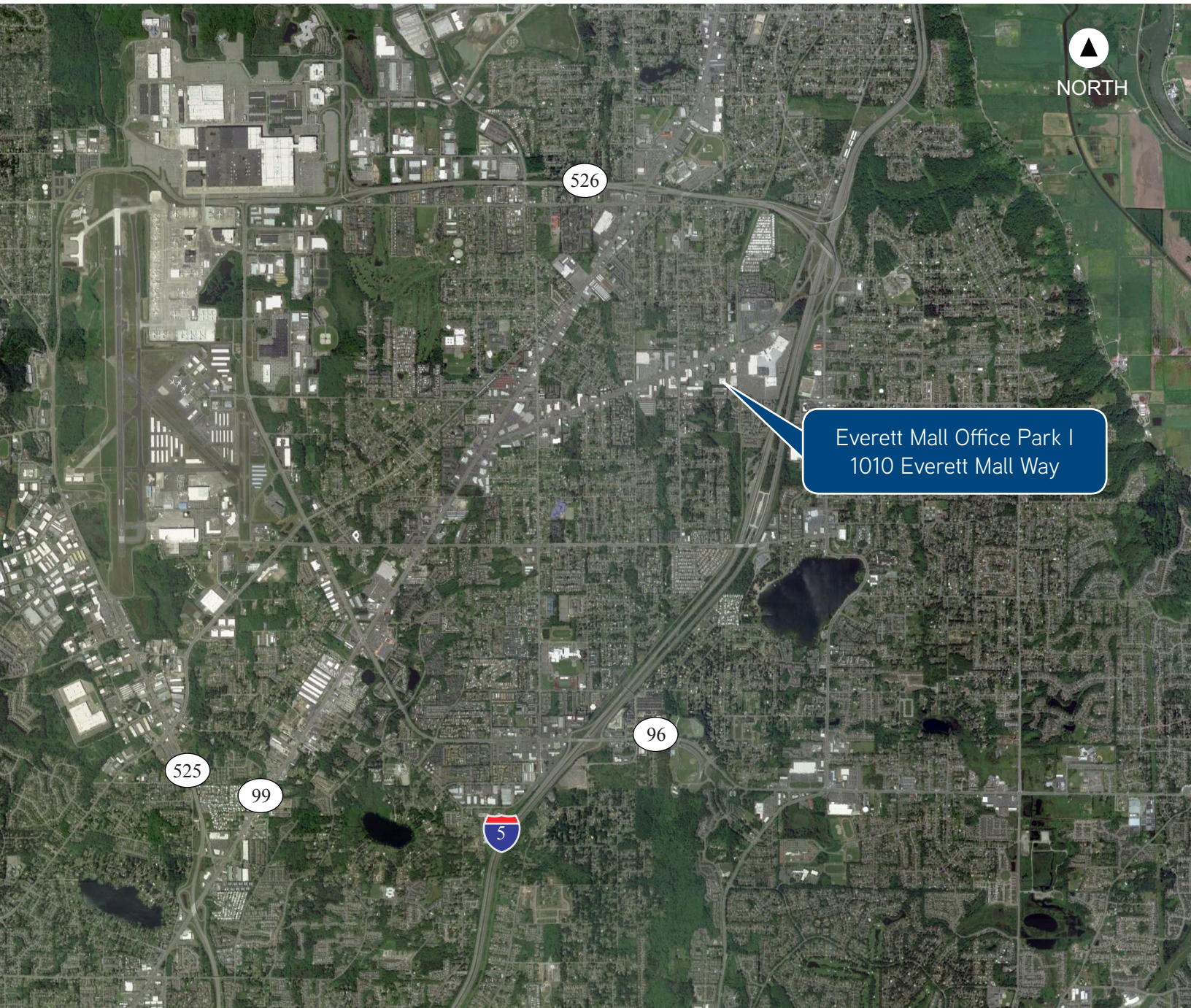
COLLIERS INTERNATIONAL
11225 SE 6th Street, Suite 240
Bellevue, WA 98004
www.colliers.com

Everett Mall Office Park I > Floor Plan



FOR LEASE > CLASS A OFFICE SPACE

Everett Mall Office Park I > Location



DEREK HEED
425 453 3133
BELLEVUE, WA
derek.heed@colliers.com

COLLIERS INTERNATIONAL
11225 SE 6th Street, Suite 240
Bellevue, WA 98004
www.colliers.com

This document has been prepared by Colliers International for advertising and general information only. Colliers International makes no guarantees, representations or warranties of any kind, expressed or implied, regarding the information including, but not limited to, warranties of content, accuracy and reliability. Any interested party should undertake their own inquiries as to the accuracy of the information. Colliers International excludes unequivocally all inferred or implied terms, conditions and warranties arising out of this document and excludes all liability for loss and damages arising there from. This publication is the copyrighted property of Colliers International and /or its licensor(s). © 2015. All rights reserved.

