

# Southlake, Texas

## Aerial View



THE INFORMATION CONTAINED HEREIN HAS BEEN GIVEN TO US BY THE OWNER OF THE PROPERTY OR OTHER SOURCES WE DEEM RELIABLE. WE HAVE NO REASON TO DOUBT ITS ACCURACY, BUT WE DO NOT GUARANTEE IT. ALL INFORMATION SHOULD BE VERIFIED PRIOR TO PURCHASE OR LEASE.

4851 LBJ Freeway 10<sup>th</sup> Floor  
 Dallas TX 75244  
 214 256 7100  
[nairl.com](http://nairl.com)

# NAI Robert Lynn

For Sale/Lease  
**3,500-27,695 SF**



## Pinnacle Point, Buildings 3-5 S. Kimball Avenue Southlake, Texas 76092



### Property Features

- (5) One-Story Office Building Project
- Construction on Buildings 1 & 2 Completed
- Buildings 3-5 Under Construction; Set to Deliver January 2020
- Less Than 4 Miles From DFW International Airport
- 1 Mile From Southlake Town Center

Developed By

**SCANNELL**  
 PROPERTIES

**SIOR**

**bc**  
 BROWN COMPANY

**Tyson Erwin, SIOR**  
 214 256 7127  
[terwin@robertlynn.com](mailto:terwin@robertlynn.com)

**Rick Medinis, SIOR**  
 214 256 7116  
[rmedinis@robertlynn.com](mailto:rmedinis@robertlynn.com)



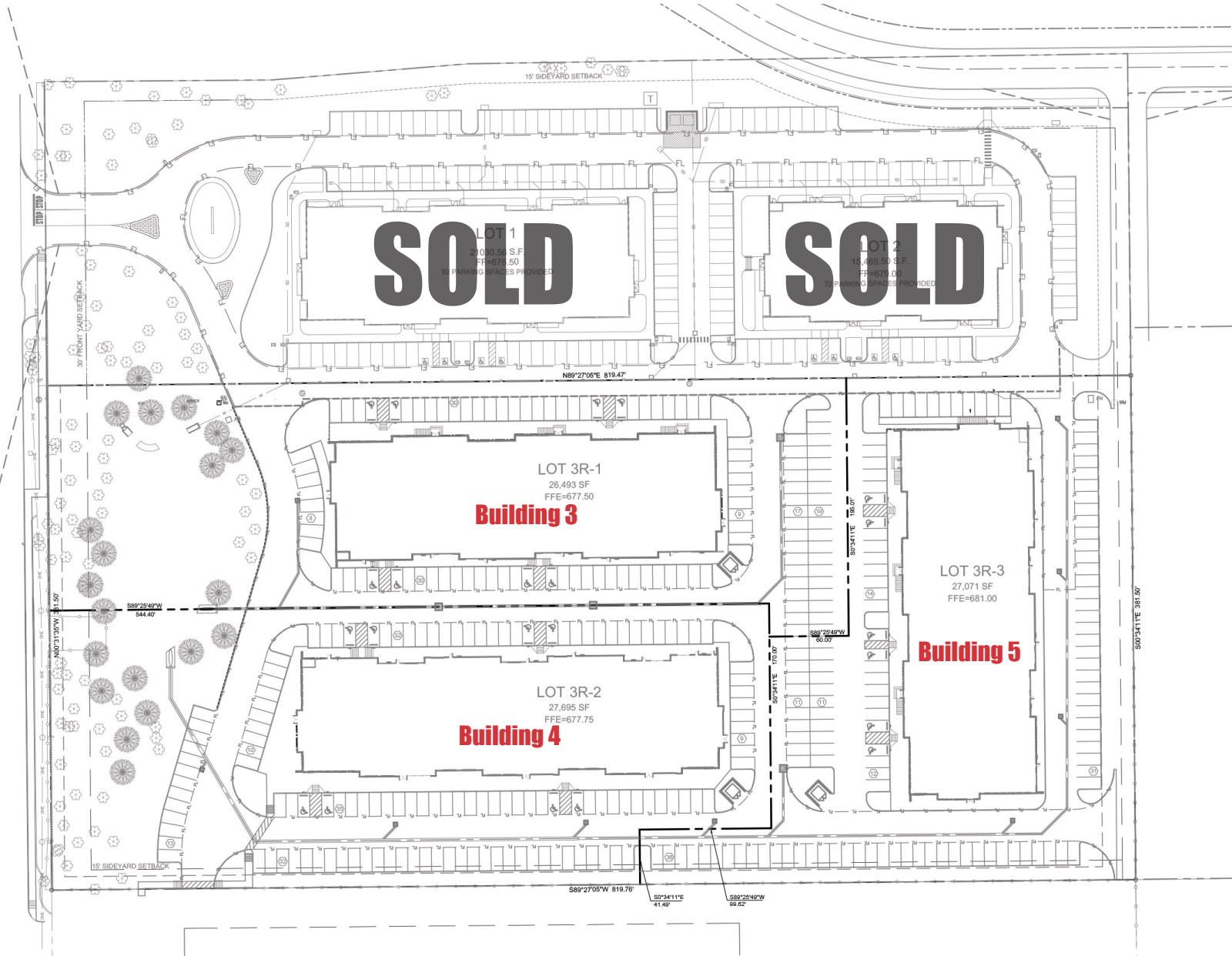
For Sale/Lease

3,500-27,695 SF

# Pinnacle Point, Buildings 3-5

## S. Kimball Avenue

Southlake, Texas 76092



### Site Plan



### Demographics

	1 MILE	3 MILES	5 MILES
Total Population	2,941	63,218	121,474
Total Households	929	22,946	43,534
Average Household Size	3.20	2.70	2.80
Average Household Income	\$198,722	\$138,185	\$154,009

### Traffic Counts

- S Kimball Ave: 14,500 VPD
- E Southlake Blvd: 49,000 VPD

Source: City of Southlake 2015