

PROFESSIONAL PARK
DEVELOPMENT LOTS
FOR SALE



7448 Broad River Rd IRMO, SC 29063

📍 SUBMARKET: IRMO

± 3.06 AC for Sale within Woodlands at Kennerly Professional Office Park

Sites are suitable for professional office and medical users

Immediate access to Park Ridge campus and close proximity to I-26

All sites have access to public utilities (City of Columbia)

Park is governed by a professional POA

ZONING: C-3

SALES PRICE: \$190,000 for all development lots

May sell individually



FOR MORE INFO, CONTACT

NICK STOMSKI, SIOR | Partner | nstomski@trinity-partners.com | 803-567-1447

JAKE NIDIFFER | Brokerage Associate | jnidiffer@trinity-partners.com | 803-567-1324

**TRINITY
PARTNERS**

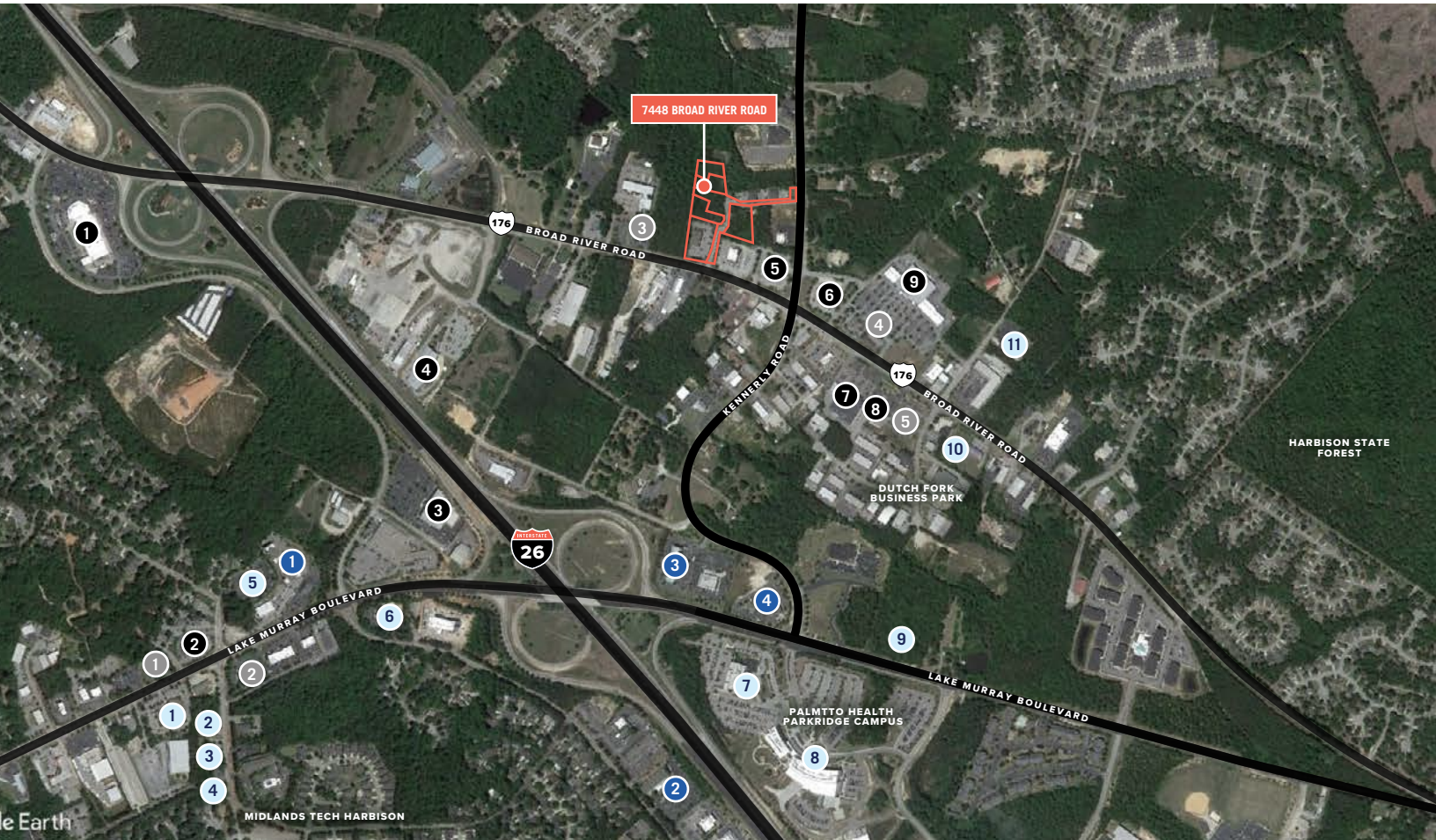
TRINITY PARTNERS | 1556 MAIN STREET, SUITE 200 COLUMBIA, SC 29201 | TRINITY-PARTNERS.COM

7448 Broad River Rd

IRMO, SC 29063

📍 SUBMARKET: IRMO

FOR SALE



MEDICAL

1. Midlands Orthopaedics
2. Drs Eyecare
3. G. Franklin Causey Jr. DMD PA
4. Dutch Fork Psychological Services
5. Three Rivers Medical
6. Paul Hahn Dentistry
7. Palmetto Health Parkridge Medical Office
8. Palmetto Health Parkridge Hospital
9. Moore Orthopaedic Clinic (Planned)
10. Providence Family Medicine Dutch Fork
11. Fresenius Medical

BANKING

1. First Community
2. First Citizens
3. SC State Credit Union
4. TD Bank
5. BB&T

LODGING

1. Residence Inn (100 Rooms)
2. Hilton Garden Inn (143 Rooms)
3. Hyatt Place (127 Rooms)
4. Extended Stay Deluxe (87 Rooms)

RETAIL

1. Jim Hudson Toyota Scion
2. CVS
3. Gold's Gym
4. Harley Haven
5. Walgreens
6. Rite Aid
7. Food Lion at Kennerly Place
8. US Post Office
9. Publix at Kennerly Crossing

FOR MORE INFO, CONTACT

NICK STOMSKI, SIOR | Partner | nstomski@trinity-partners.com | 803-567-1447

JAKE NIDIFFER | Brokerage Associate | jnidiffer@trinity-partners.com | 803-567-1324

TRINITY PARTNERS | 1556 MAIN STREET, SUITE 200 COLUMBIA, SC 29201 | TRINITY-PARTNERS.COM

**TRINITY
PARTNERS**

7448 Broad River Rd

FOR SALE

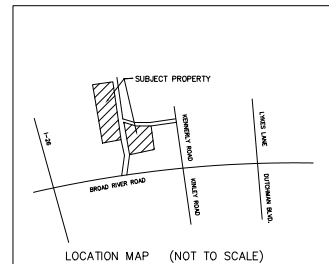
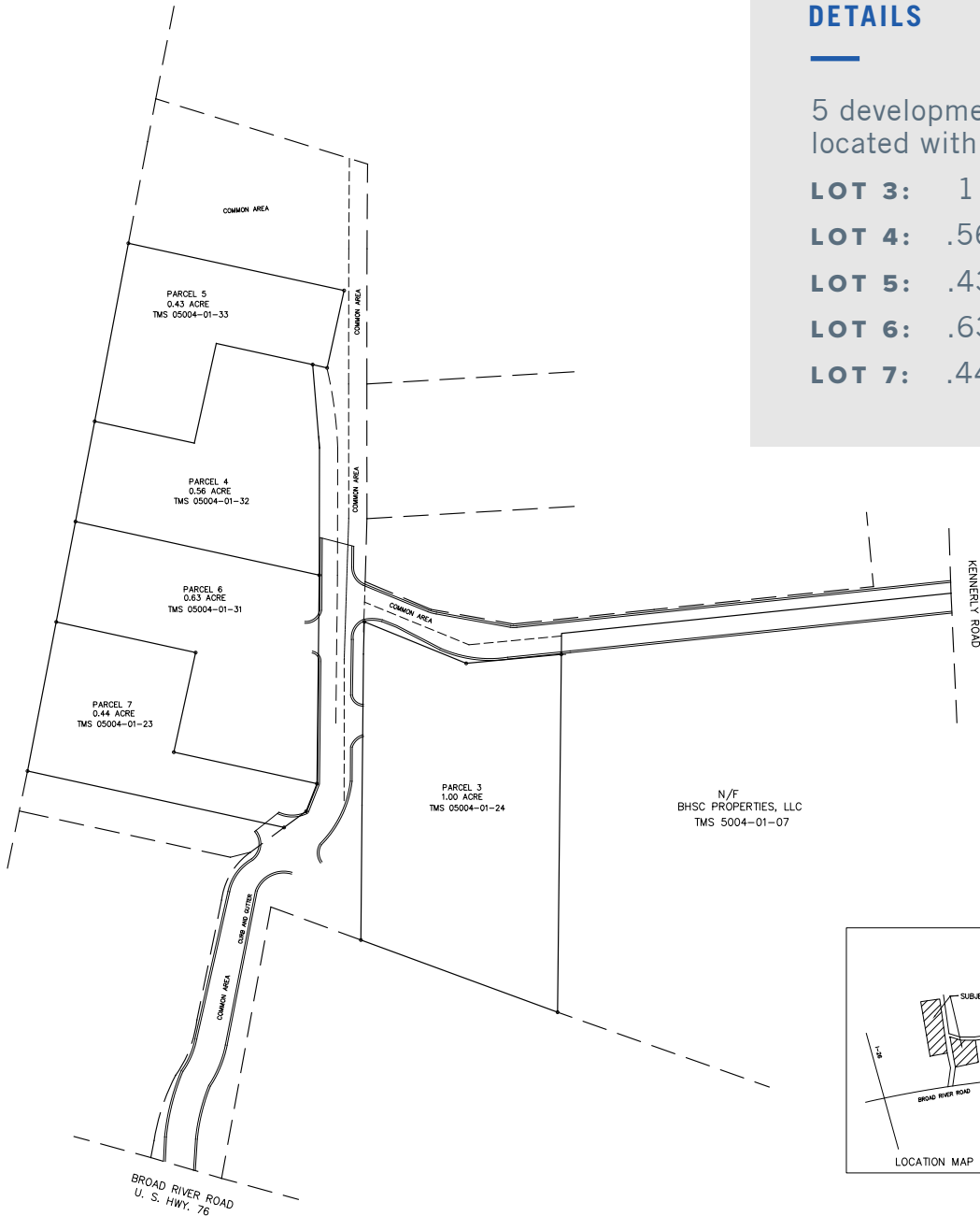
IRMO, SC 29063

 SUBMARKET: IRMO

DETAILS

5 development parcels located within the Park

- LOT 3:** 1 acre
- LOT 4:** .56 acres
- LOT 5:** .43 acres
- LOT 6:** .63 acres
- LOT 7:** .44 acres



FOR MORE INFO, CONTACT

NICK STOMSKI, SIOR | Partner | nstomski@trinity-partners.com | 803-567-1447

JAKE NIDIFFER | Brokerage Associate | jnidiffer@trinity-partners.com | 803-567-1324

TRINITY PARTNERS

TRINITY PARTNERS | 1556 MAIN STREET, SUITE 200 COLUMBIA, SC 29201 | TRINITY-PARTNERS.COM