

## 610 Fifth Avenue

Between 49th & 50th Streets

### Floor/Area:

Partial 4th Floor: 10,638 RSF

### Rental Rate:

Upon Request

### Possession:

Immediate/Space is Vacant

### Term:

Through 11/30/2027

[Virtual Tour](#)



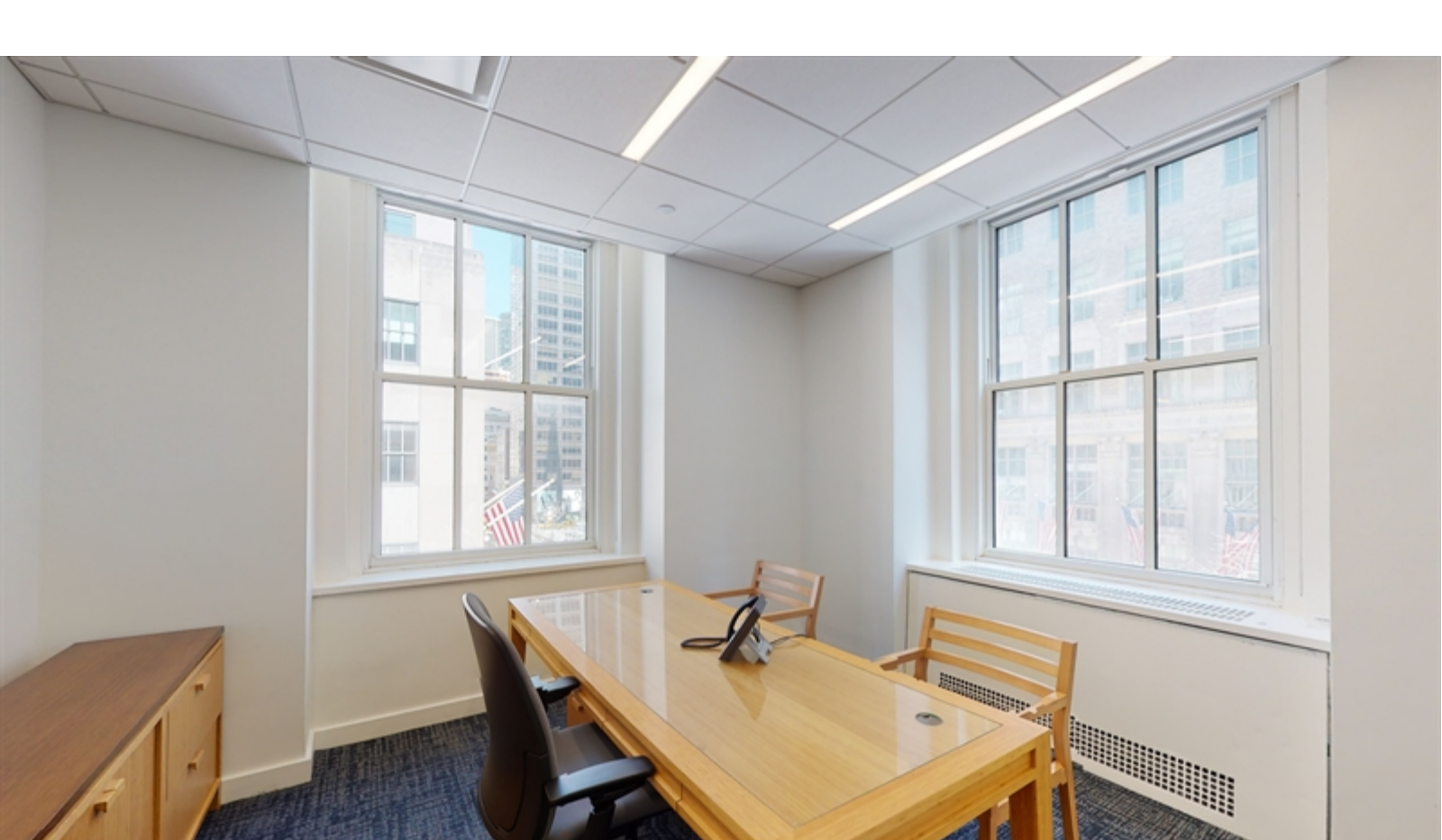
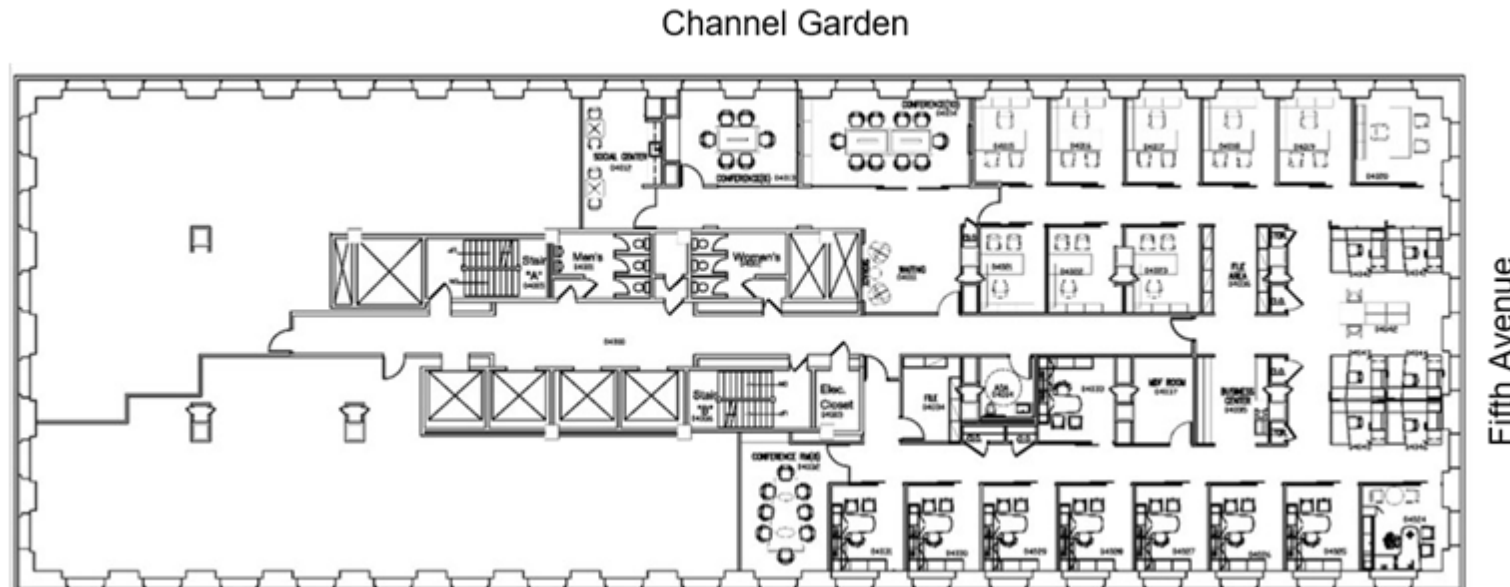
### Space Features

- High quality built installation featuring 16 offices, 3 conference rooms, open seating for 8 people
- Space will be delivered furnished and wired
- Great views of the Rockefeller Center Ice Rink

### Building Features

- Attended Lobby with 24 Hour Security
- Direct access to Rockefeller Center Concourse
- Conveniently located near Grand Central Station and the Port Authority Bus Terminal

Channel Garden



[Download PDF](#)

For information, please contact:

**Tim Gibson**  
Executive Managing Director  
t 212-372-2455  
Tim.Gibson@nrmk.com

**Bill Levitsky**  
Senior Managing Director  
t 212-372-2437  
Bill.Levitsky@nrmk.com

**John Cilmi, Jr.**  
Associate Director  
t 212-372-2115  
John.Cilmi@nrmk.com

**Harry Singer**  
Associate  
t 212-372-2008  
Harry.Singer@nrmk.com

125 Park Avenue  
New York, NY 10017  
t 212-372-2000  
<http://www.ngkf.com>



125 Park Avenue, New York, NY 10017 t 212-372-2000

The information contained herein has been obtained from sources deemed reliable but has not been verified and no guarantee, warranty or representation, either express or implied, is made with respect to such information. Terms of sale or lease and availability are subject to change or withdrawal without notice.

©2022 Newmark. All Rights Reserved.