

**±10,547 SF INDUSTRIAL BUILDING FOR LEASE**  
**ESSEX COMMERCE CENTER**  
1964 ESSEX COURT, REDLANDS, CA 92373



# ±10,547 SF INDUSTRIAL BUILDING FOR LEASE

## ESSEX COMMERCE CENTER

1964 ESSEX COURT, REDLANDS, CA 92373

### PROPERTY INFORMATION

<b>AVAILABLE SF:</b>	±10,547 SF Industrial Building
<b>ACRES:</b>	.63 (27,512 SF)
<b>OFFICE SF:</b>	±1,128 SF Single Story Office
<b>YEAR BUILT:</b>	2003
<b>GL DOORS:</b>	3
<b>CEILING HEIGHT :</b>	18'
<b>PARKING:</b>	23 Parking Stalls
<b>POWER:</b>	400 Amps; 277/480 V
<b>YARD:</b>	Possible
<b>SPRINKLERED:</b>	.50GPM/2,000 SF
<b>ZONING:</b>	EV/IC
<b>COMMENTS:</b>	Available Immediately



Great Redlands location on a cul-de-sac with excellent access to I-10 and 210 Freeways. Close to amenities. Building has metal halide lighting with warehouse skylights.



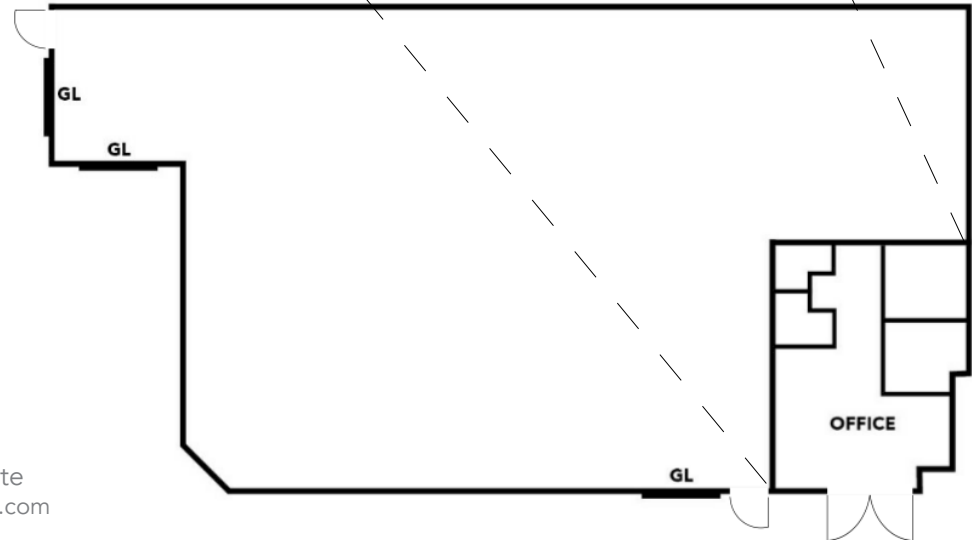
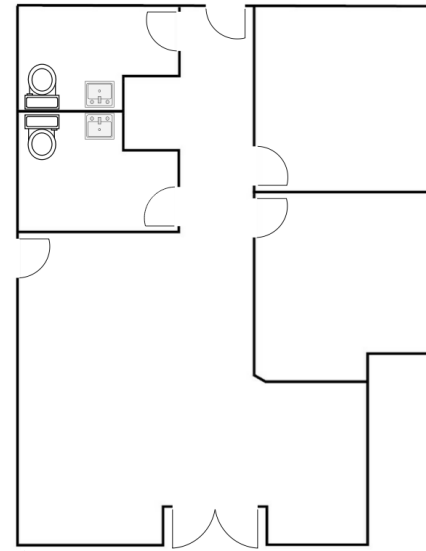
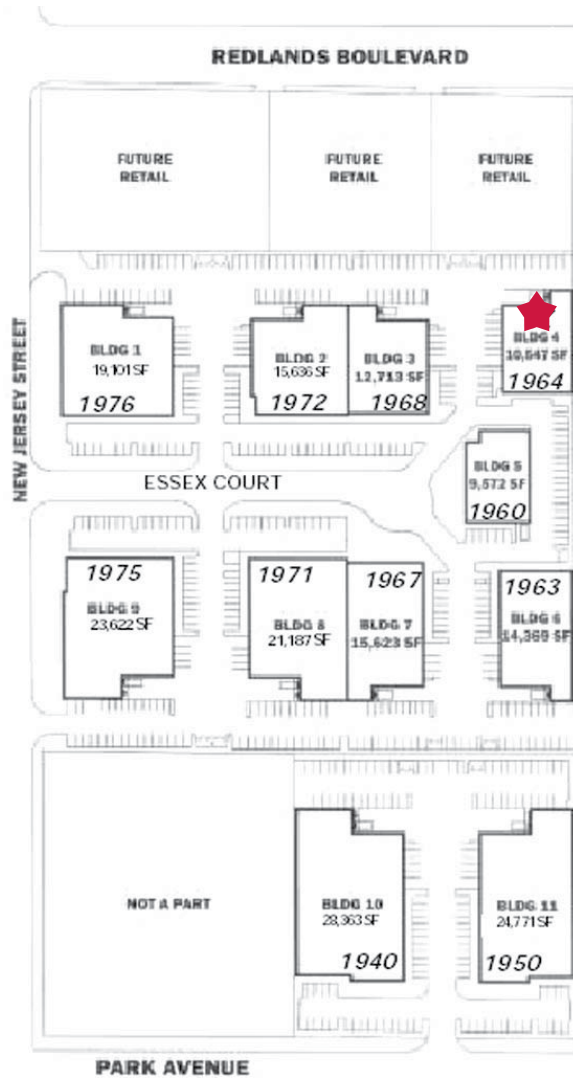
**HERRICK JOHNSON** | Senior Vice President  
hjohnson@lee-associates.com  
951.276.3632  
License ID 01013436

**MAT SKOGEBO** | Associate  
mskogebo@lee-associates.com  
951.276.3646  
License ID 019753

# +10,547 SF INDUSTRIAL BUILDING FOR LEASE

## ESSEX COMMERCE CENTER

1964 ESSEX COURT, REDLANDS, CA 92373



**HERRICK JOHNSON** | Senior Vice President

✉ [hjohnson@lee-associates.com](mailto:hjohnson@lee-associates.com)

☎ 951.276.3632

License ID 01013436

**MAT SKOGEBO** | Associate

✉ [mskogebo@lee-associates.com](mailto:mskogebo@lee-associates.com)

☎ 951.276.3646

License ID 019753