



Centerpoint Mission Valley

For Lease

Offices For Lease in Mission Valley

3110-3160 Camino Del Rio S

San Diego, CA 92108

Derek Applbaum

Senior Vice President

+1 858 677 5331

derek.applbaum@colliers.com



Accelerating success.

Property Highlights



Professional Office Building with Corporate Image



Parking Ratio: 3.5 / 1,000



Spec Suites Available



Elevator Served



Immediate Access to Five Major Arterial Highways



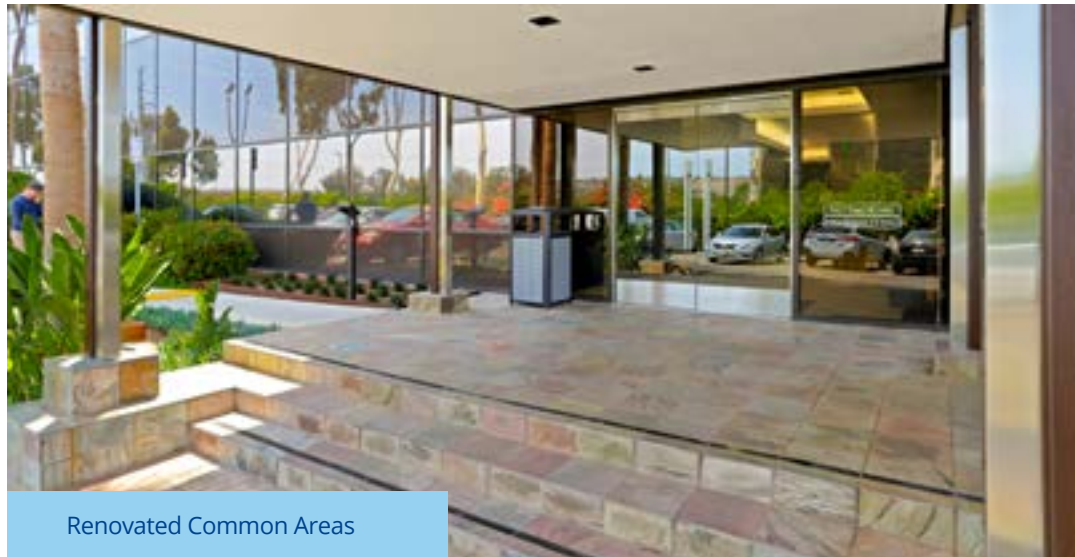
Recently Renovated Common Areas



Custom Spec Suites



Custom Spec Suites



Renovated Common Areas



Renovated Common Areas



Availabilities

Lease Rate
\$2.15/SF + E

3110 Camino Del Rio S

SUITE	SQUARE FOOTAGE	AVAILABLE	NOTES
A-215	1,329	Now	One Office & Open Area
A-314	1,761	Now	Spec Suite Five Offices, Conference Room, Open Area, Kitchen Storage Area

3160 Camino Del Rio S

SUITE	SQUARE FOOTAGE	AVAILABLE	NOTES
B-103	1,330	Now	Spec Suite  Three Offices, Conference Room, Open Area, Kitchen Storage Area
B-204	1,392	Now	Spec Suite  Three Offices, Conference Room, Open Area, Kitchen Storage Area

Floorplan

3110 Camino del Rio S

Suite A-215

- 1,329 RSF
- Available Now
- One Office
- Open Area

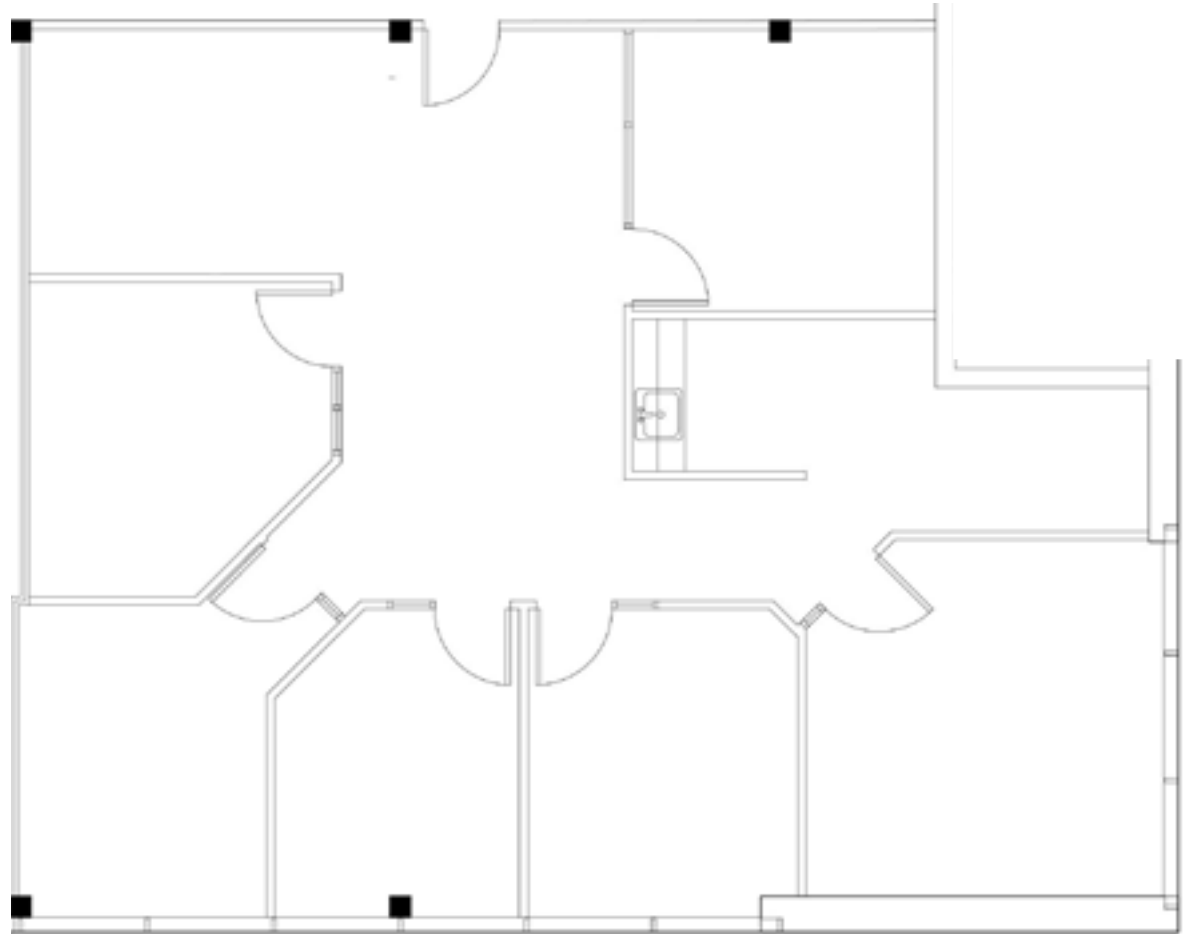
Floorplan Coming Soon

Floorplan

3110 Camino del Rio S

Suite A-314

- 1,761 RSF
- **Spec Suite**
- Available Now
- Five Offices
- Conference Room
- Open Area
- Kitchen Storage Area



Floorplan

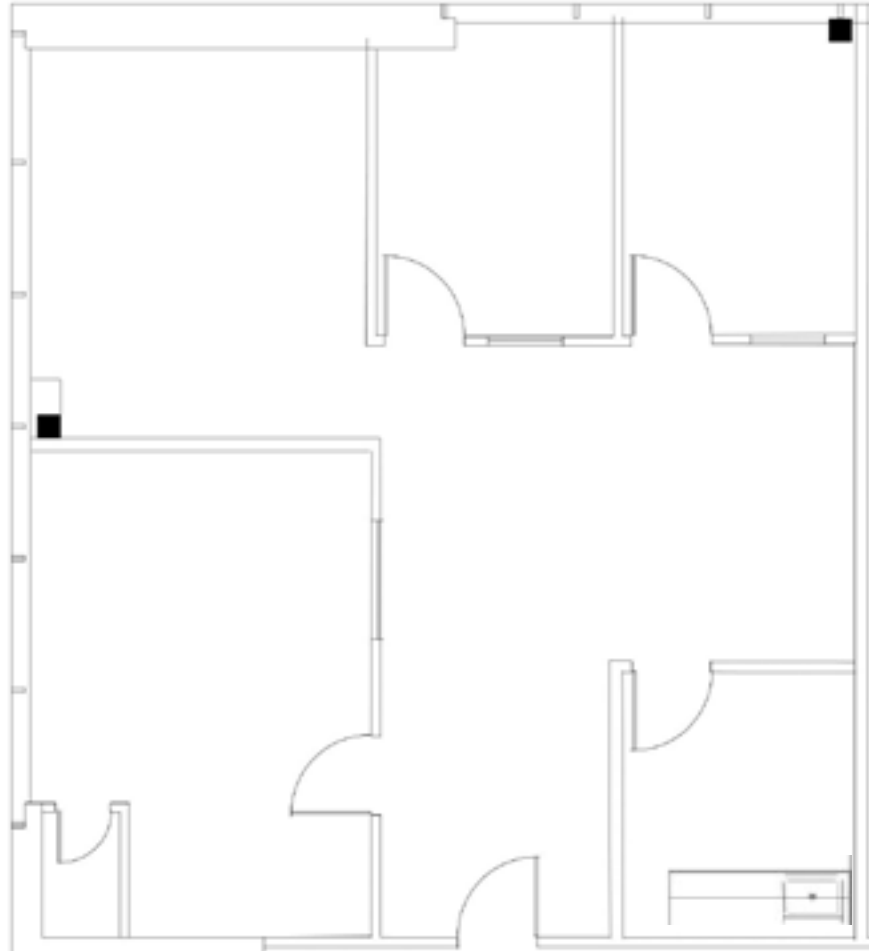
3160 Camino del Rio S

Suite B-103

- 1,330 RSF
- **Spec Suite**
- Available Now
- Three Offices
- Conference Room
- Open Area
- Kitchen Storage Area



Take a Tour



Floorplan

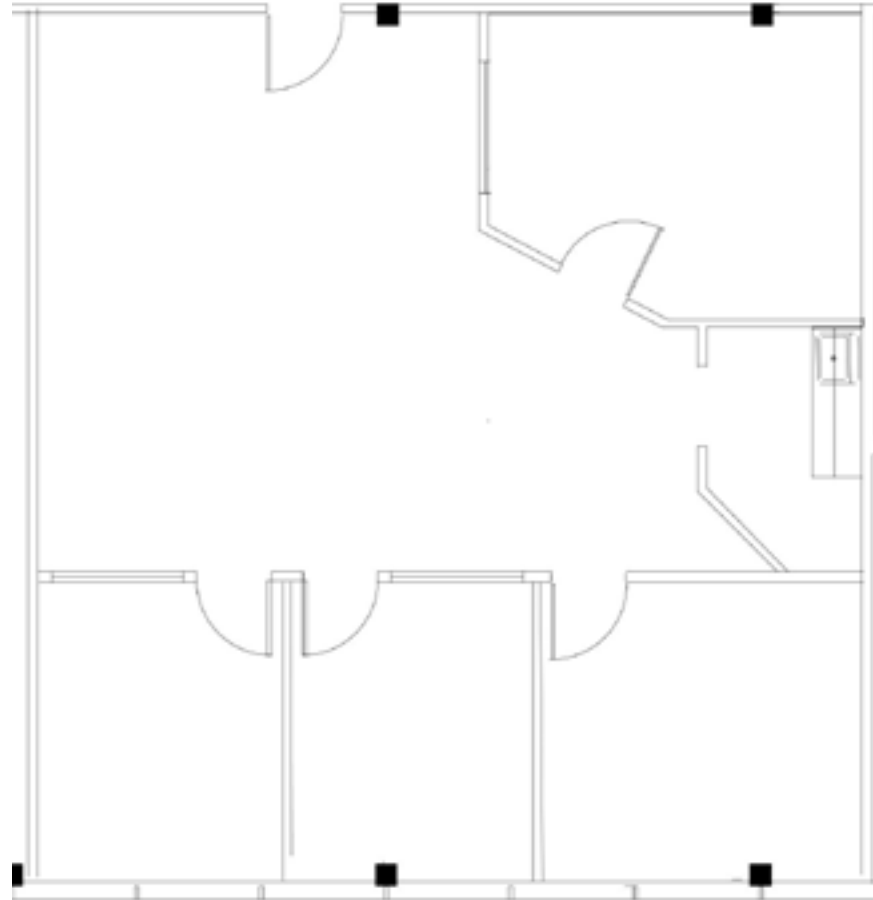
3160 Camino del Rio S

Suite B-204

- 1,392 RSF
- **Spec Suite**
- Available Now
- Three Offices
- Conference Room
- Open Area
- Kitchen Storage Area



Take a Tour





Mission Valley Location Highlights

Mission Valley offers the accessibility of a central business district with ample parking and world class amenities. Arterial freeways blanket Mission Valley and provide easy access to employers from population nodes across the region. Mission Valley has a vibrant community and is positioned to be the new business hub of San Diego.

At the geographic midpoint of San Diego, Mission Valley is experiencing a coming of age. Under construction throughout its 2,400 acres are an array of residential, retail, and commercial, projects — making the area a walkable, bikeable, riverside utopia.

Over 600

Multifamily Units
Under Construction

Demographics



2022
population

24,889



2022 Average
Household Income

\$107,400



2021
Median Age

34



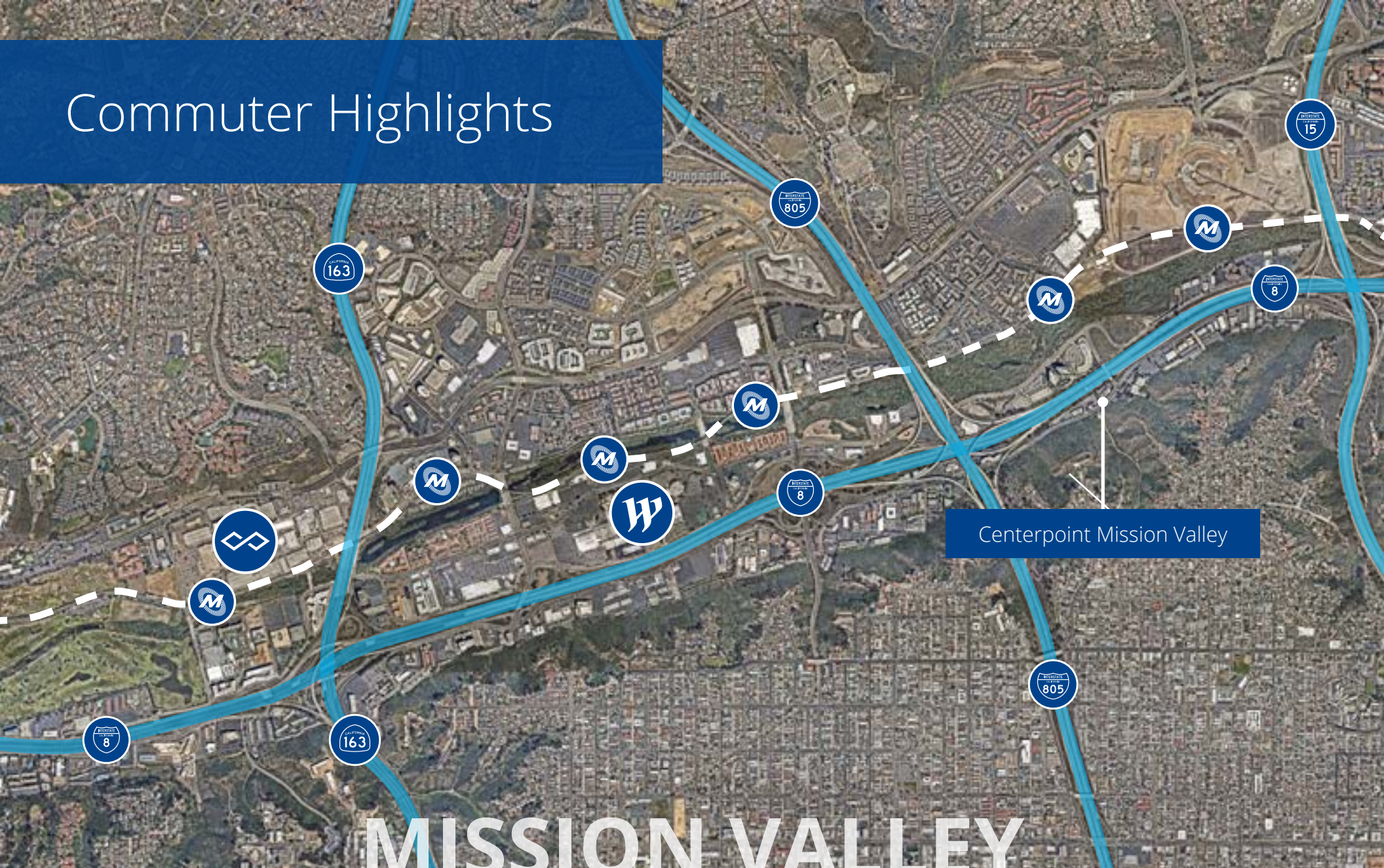
Bachelor's
Degree

37.2%

Graduate/
Professional Degree

22.4%

Commuter Highlights



Centerpoint Mission Valley

MISSION VALLEY



Interstate 8
4 min.



State Route 163
6 min.



Interstate 805
7 min.



Interstate 15
4 min.



Fashion Valley Mall
7 min.



Mission Valley Mall
8 min.



San Diego Airport
20 min.



This document has been prepared by Colliers International for advertising and general information only. Colliers International makes no guarantees, representations or warranties of any kind, expressed or implied, regarding the information including, but not limited to, warranties of content, accuracy and reliability. Any interested party should undertake their own inquiries as to the accuracy of the information. Colliers International excludes unequivocally all inferred or implied terms, conditions and warranties arising out of this document and excludes all liability for loss and damages arising there from. This publication is the copyrighted property of Colliers International and/or its licensor(s). ©2022. All rights reserved.

Offices For Lease in Mission Valley

3110-3160 Camino Del Rio S

San Diego, CA 92108

Derek Applbaum

Senior Vice President

License No. 01280412

+1 858 677 5331

derek.applbaum@colliers.com



Accelerating success.