

11111 West Olympic Boulevard
LOS ANGELES, CA 90065

FOR LEASE MEDICAL OFFICE/RETAIL SPACE

1,185 - 7,581
AVAILABLE SQUARE FEET



Charles Dunn

CONTACT:

TRACY TAFT

Director

Lic. #00903455

Direct | 213.270.6207

ttaft@charlesdunn.com

CHARLES DUNN COMPANY, INC.

800 West Sixth Street, Suite 800 | Los Angeles, CA 90017 | Lic. #01201641 | charlesdunn.com

PROPERTY DETAILS

11111 Olympic West Boulevard has 1,184 - 7,581 available square feet available. The Property is strategically located in the heart of West Los Angeles within easy range of Cedars Sinai Medical Center, UCLA Medical Center and Saint John's Hospital and Medical Center. The building is undergoing an renovation that promises to transform the Beverly Center Medical experience.

PROPERTY FACTS - AVAILABLE SPACE

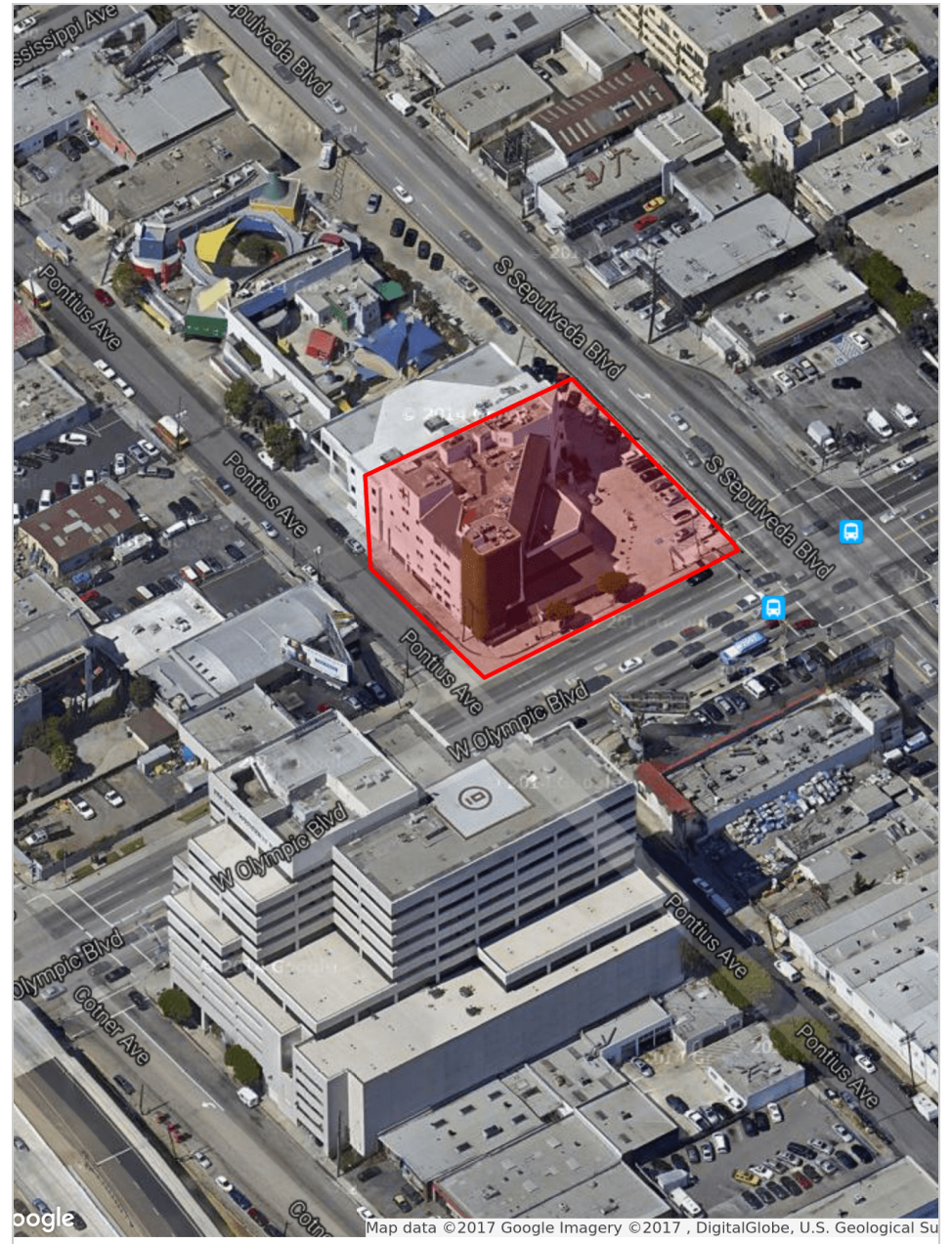
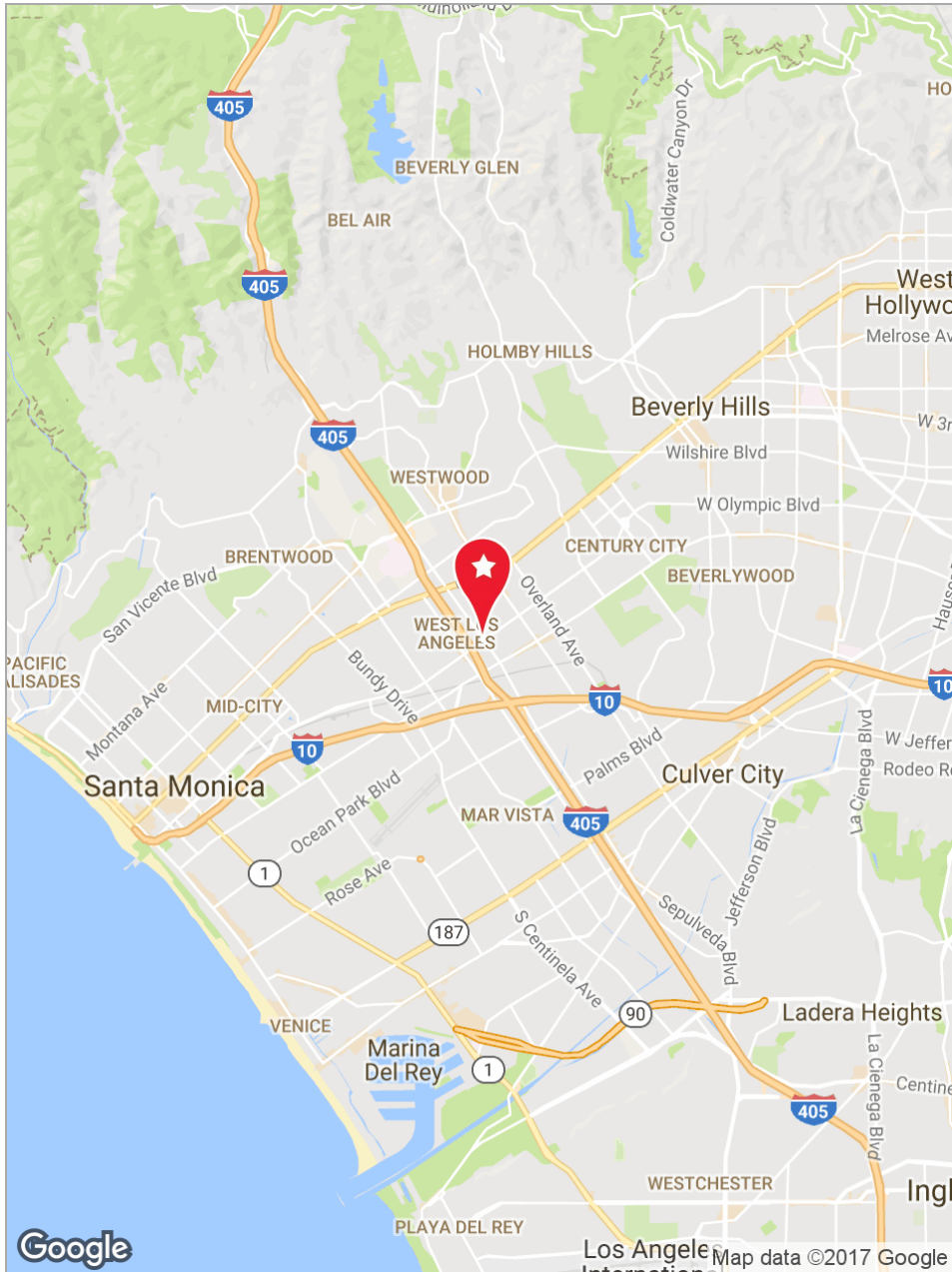
Ground Floor:	±2,718 SF
	±2,765 SF
	±2,098 SF
Second Floor:	±1,184 SF
	±3,752 SF
Fourth Floor:	±1,692 SF
	±2,685 SF

PROPERTY HIGHLIGHTS

- > 4% commission to procuring tenant broker
- > 29,530 SF mixed-use medical/creative office project with 7,581 SF of total available retail space (divisible)
- > Convenient location adjacent to the 405 and 10 freeways
- > Tremendous visual street exposure with excellent signage opportunity
- > Valet parking with 5/1000 parking ratio
- > Unique architecture, new property upgrades in process
- > Parking area to be refurbished with adjacent patio area
- > Walking distance close to new Expo Sepulveda Metro station
- > Available space on highly trafficked (57,698 CPD*) corner - situated on the North West corner of Olympic Boulevard and Sepulveda Boulevard



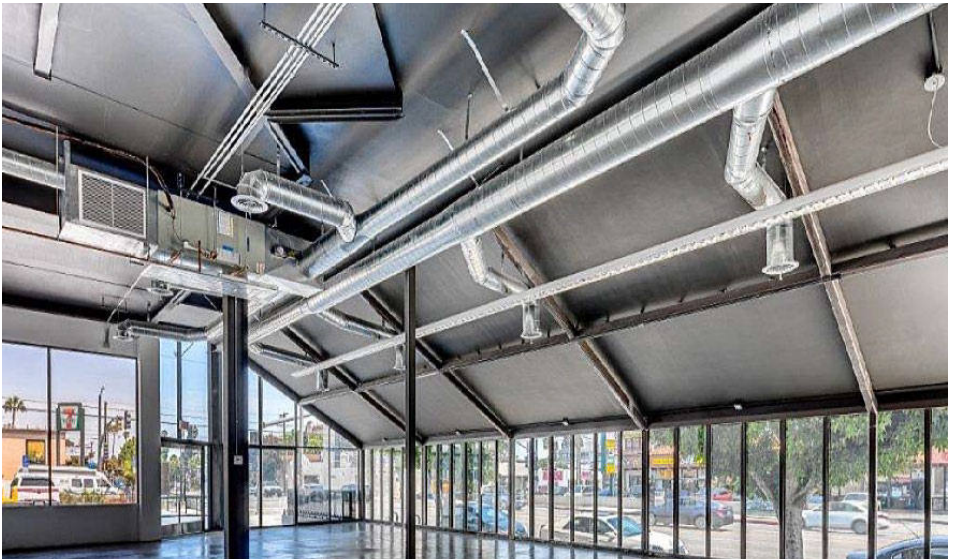
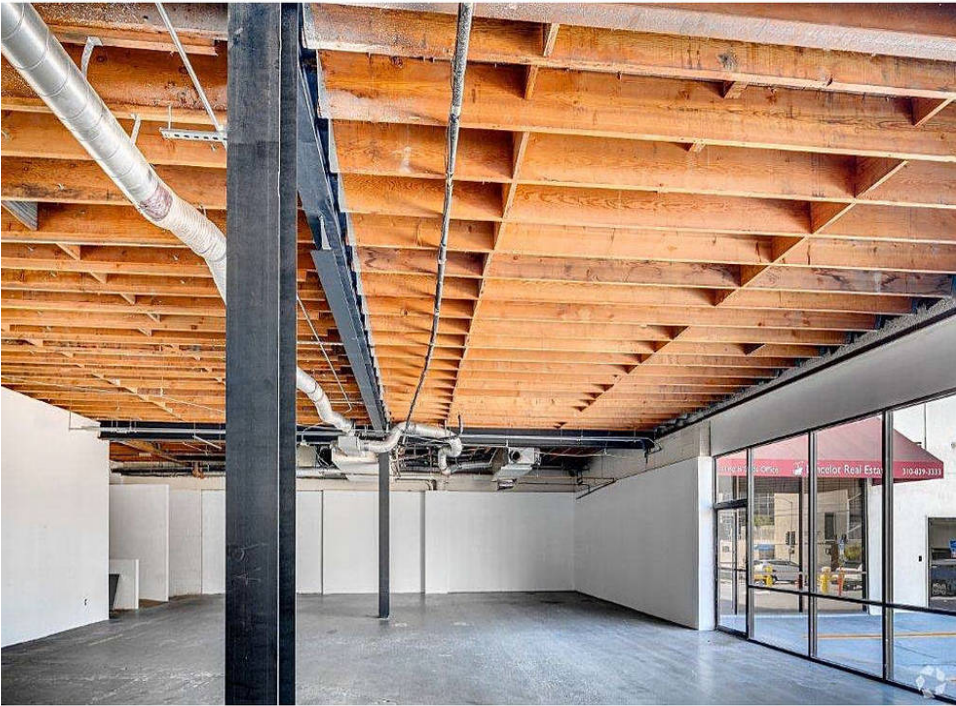
PROPERTY MAPS



SURROUNDING OVERVIEW



PROPERTY PHOTOS



1111 West Olympic Boulevard

Los Angeles, CA 90065

TRACY TAFT

Director

BRE #00903455

Direct | 213.270.6207

ttaft@charlesdunn.com

Charles Dunn Company, Inc. | 800 West Sixth Street, Suite 800 | Los Angeles, CA 90017 | Lic. #01201641 | charlesdunn.com