



±1,127 SF - ±12,538 SF

UNDER NEW OWNERSHIP

4908

INDUSTRIAL | OFFICE | RETAIL

1Forty3 Business Park

4820 - 4926 E McDowell | Phoenix, AZ 85008

Keri Scott

Senior Associate
+1 602 229 5972
keri.scott@cushwake.com

Pat Moroney

Associate
+1 602 224 4403
pat.moroney@cushwake.com

Golden St. John

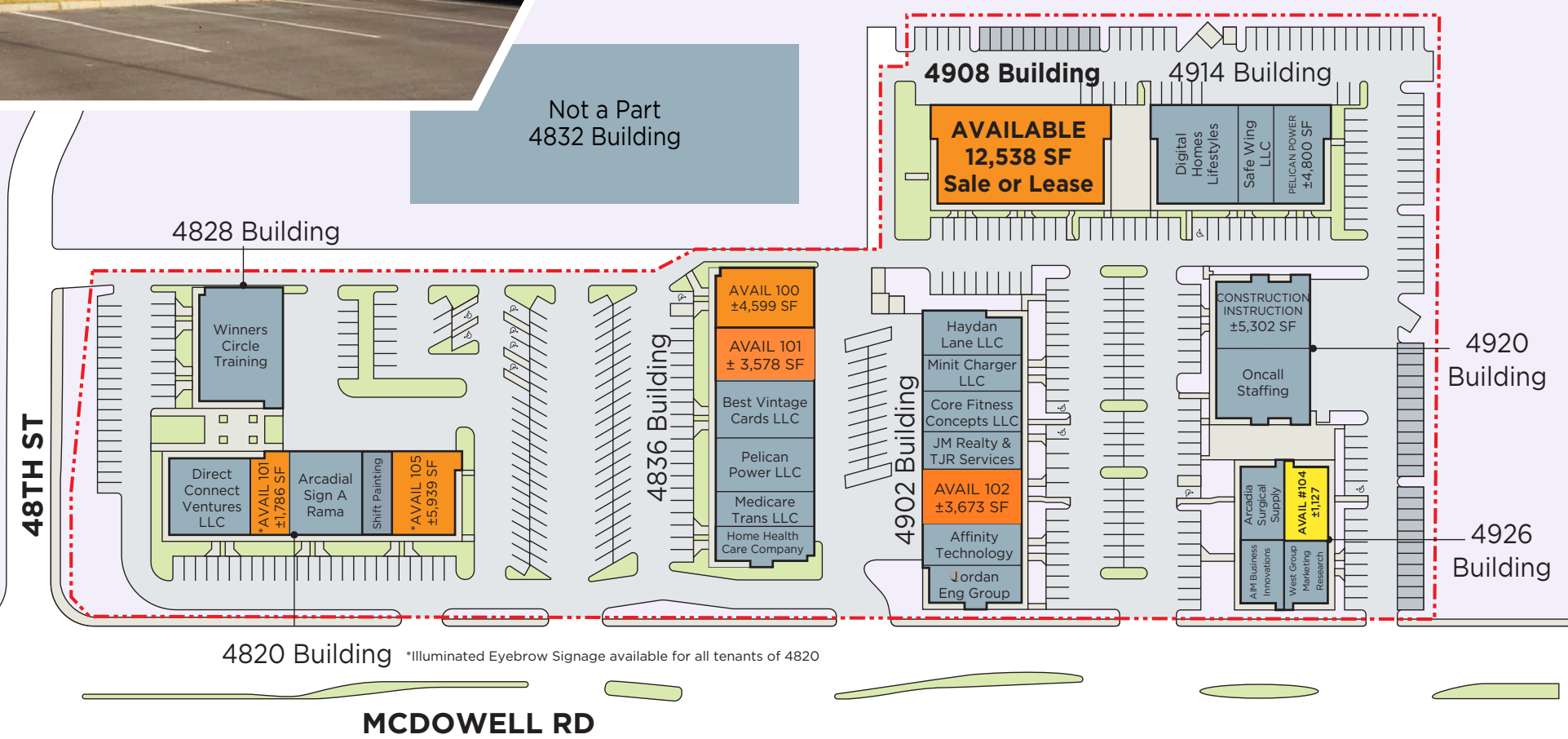
Director
+1 602 229 5970
golden.stjohn@cushwake.com

2555 E Camelback Rd, Suite 400
Phoenix, Arizona 85016
ph: +1 602 954 9000
fx: +1 602 253 0258
cushmanwakefield.com



PROPERTY FEATURES

- ± 109,175 SF Complex
- IND PK Zoning, Phoenix
- Oversized Grade Level Door
- 100% HVAC warehouse units available
- Units range from 30%-100% office
- Various unit uses including Industrial, Office, & Showroom
- New Monument Signage
- Over 60,000 VPD on McDowell Road



- Covered Parking
- Available | IG
- Available | FSG

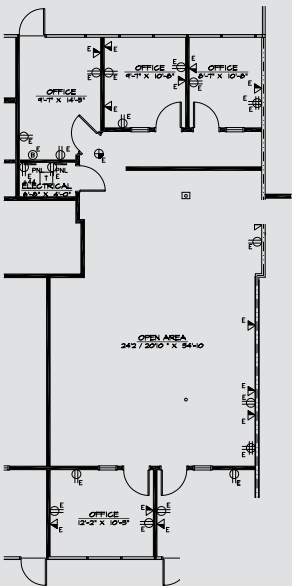




1Forty3 Business Park

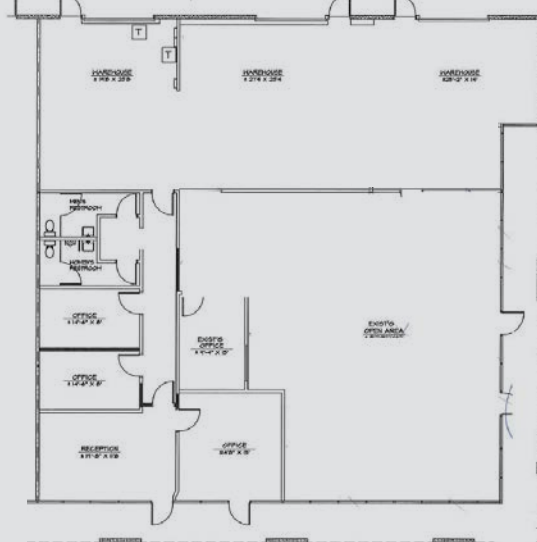
4820 - 4926 E McDowell | Phoenix, AZ 85008

BUILDING 4820 #101
±1,786 SF

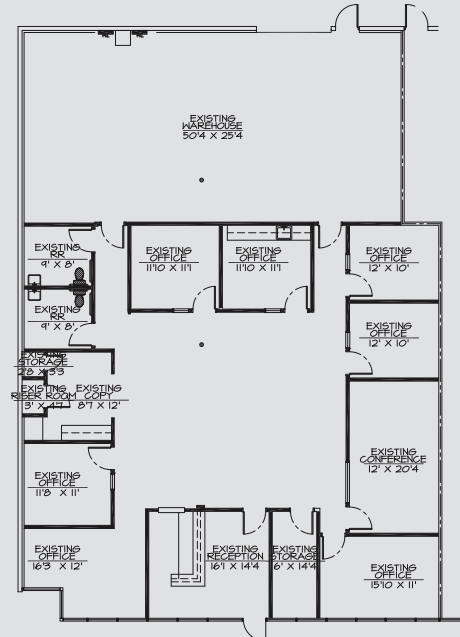


BUILDING 4820 #105
±5,939 SF

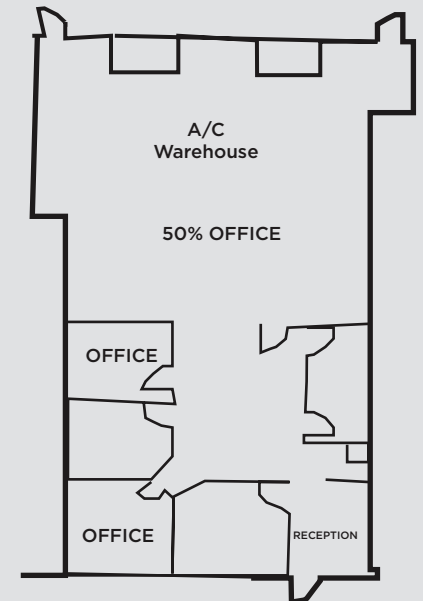
Showroom Space
Illuminated Signage Permitted



BUILDING 4836 #100
±4,599 SF*



BUILDING 4836 #101
±3,578 SF*



***Contiguous ± 8,177 SF**

