



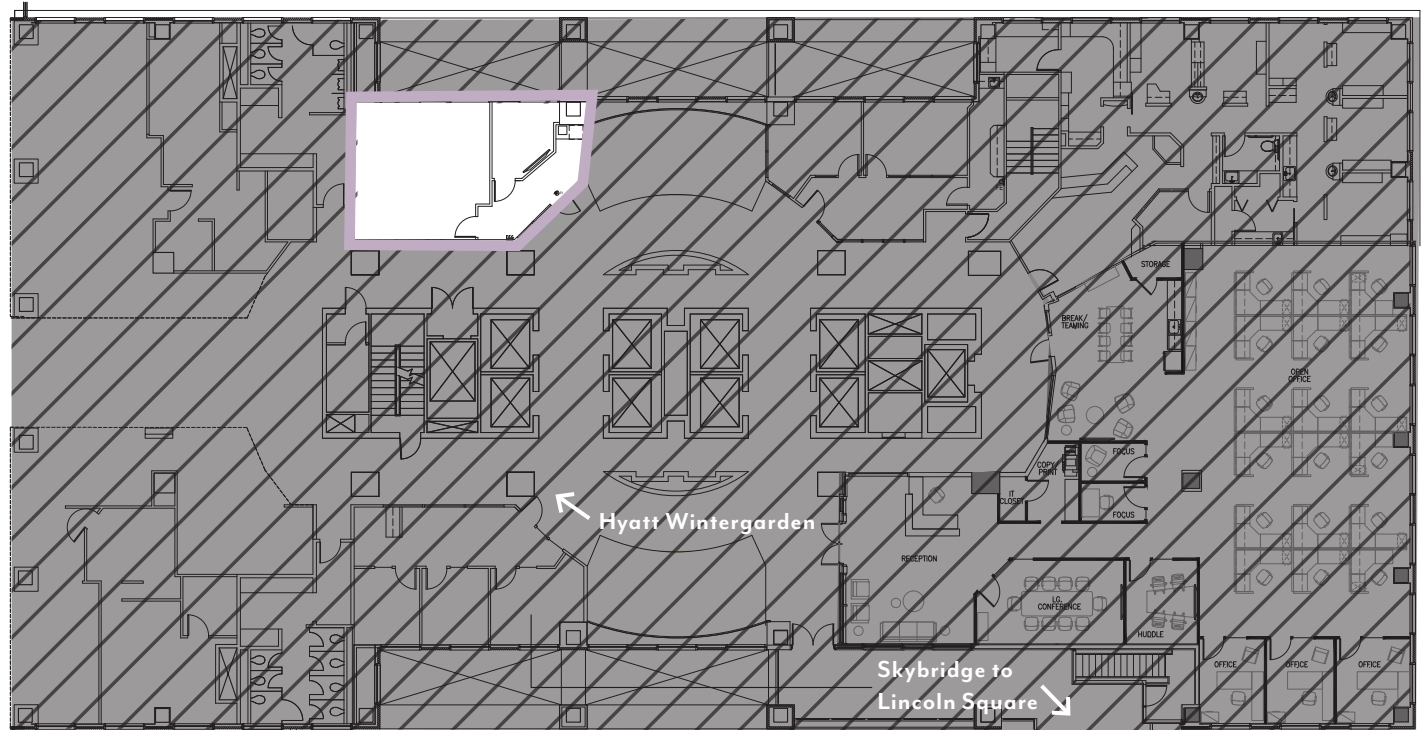
BELLEVUE PLACE BUILDING
 10500 NE 8th Street
 Bellevue, WA

BELLEVUE PLACE BUILDING

2nd Floor • Suite 212 • 796 RSF

SPACE FEATURES

- Available Now
- Direct access to 2nd floor elevator lobby
- Small and large conference / meeting space



For more information or to schedule a tour, please contact:

PAUL SWEENEY
 425.646.5225
sweeney@broderickgroup.com

JIM KINERK
 425.646.5221
kinerk@broderickgroup.com

CLAYTON HOLM
 425.274.4287
holm@broderickgroup.com

The information contained herein has been given to us by the owner or sources which we deem reliable. We have no reason to doubt its accuracy, but we do not guarantee it. Prospective tenants should carefully verify all information contained herein.

↑ BACK TO AVAILABLE SPACE



NORTH