

CBRE



255 E Fifth Street | Cincinnati, OH



## PROPERTY HIGHLIGHTS

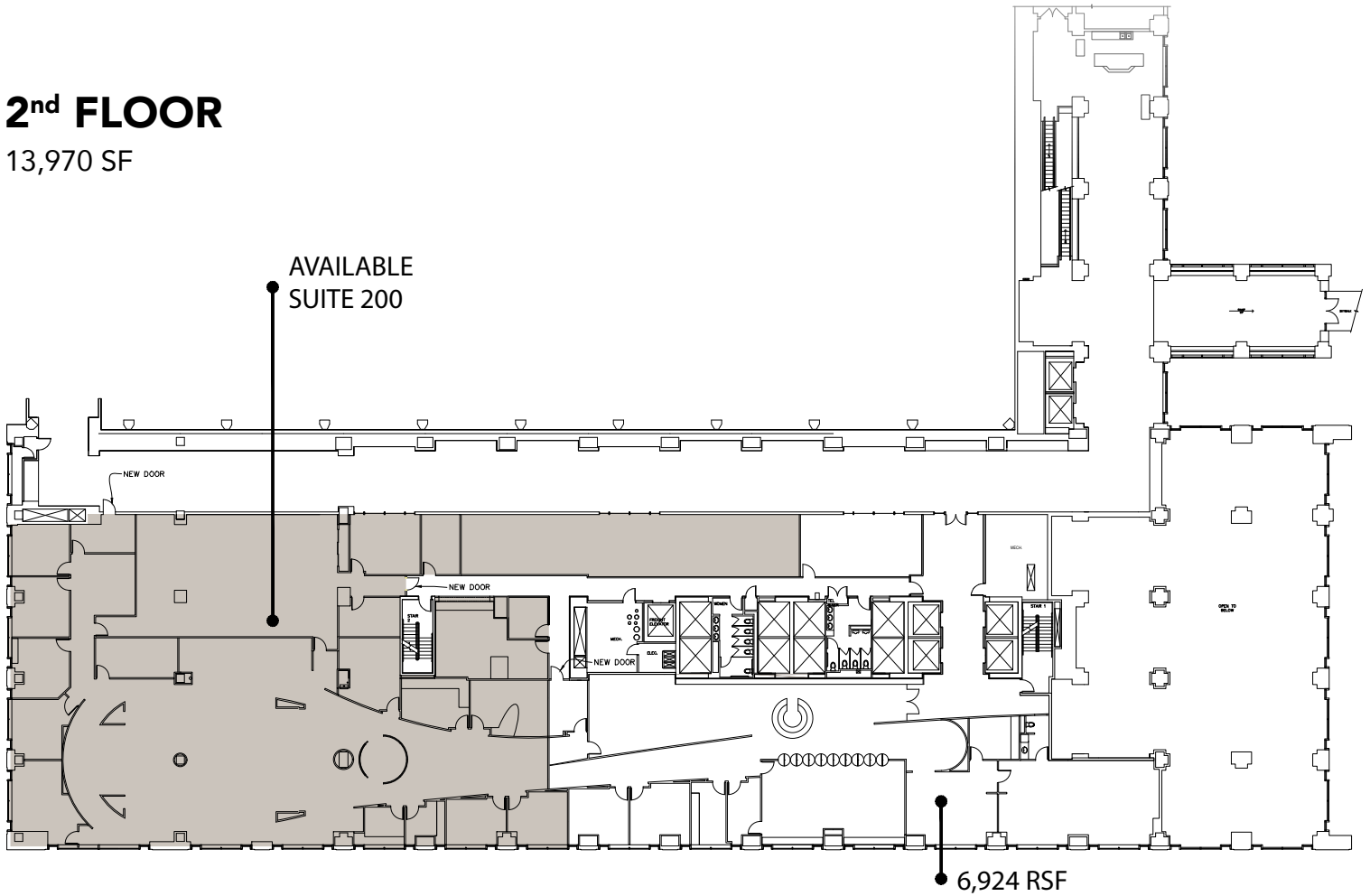
- Iconic class A building in Cincinnati's skyline
- Located in the heart of the CBD
- Onsite parking garage
  - » 1,233 Spaces
- Onsite amenities
  - » Bagel Stop Cafe'
  - » Wicked Wich
  - » Curly Girl Coffee shop
  - » Skyline Chili
- Onsite conference facilities (multiple rooms with seating for 8 - 40 people)
- 32 floor building comprised of 522,000 Square Feet
  - » Suite 200 - 13,970 SF
  - » Suite 1100 - 20,189 SF
  - » Suite 1300 - 20,189 SF
  - » Suite 2200 - 8,039 SF
  - » Suite 2350 - 11,521 SF
- 64,190 Square Feet
- One block to the Streetcar
- Walking distance to The Banks and Fountain Square
- Part of the Skywalk system
  - » \$14.50 Net Floors 2-11
  - » \$15.50 Net Floor 22
  - » \$9.89 O.E. + Ele.



## 2<sup>nd</sup> FLOOR

13,970 SF

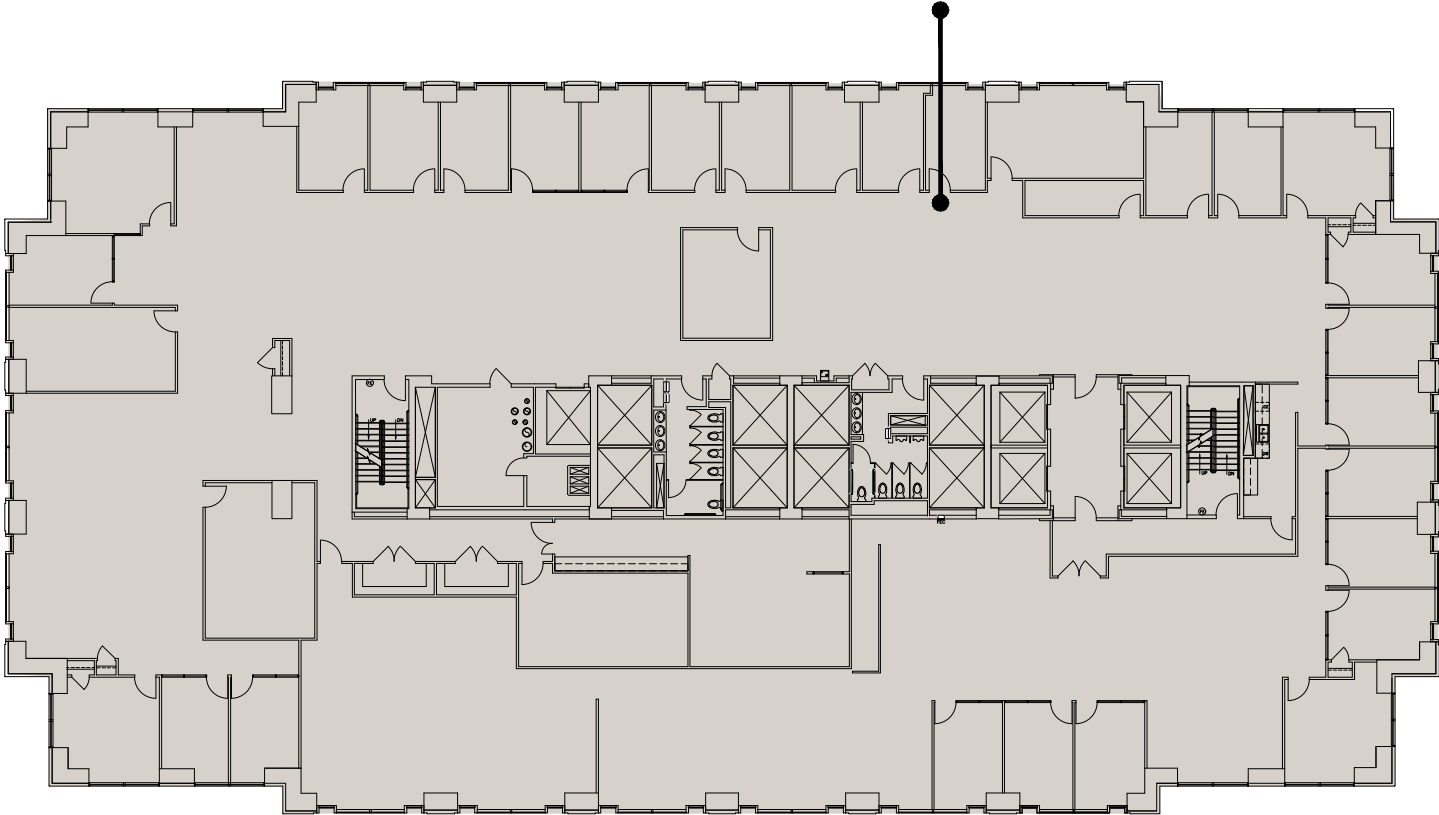
AVAILABLE  
SUITE 200



# 11th FLOOR

20,189 SF

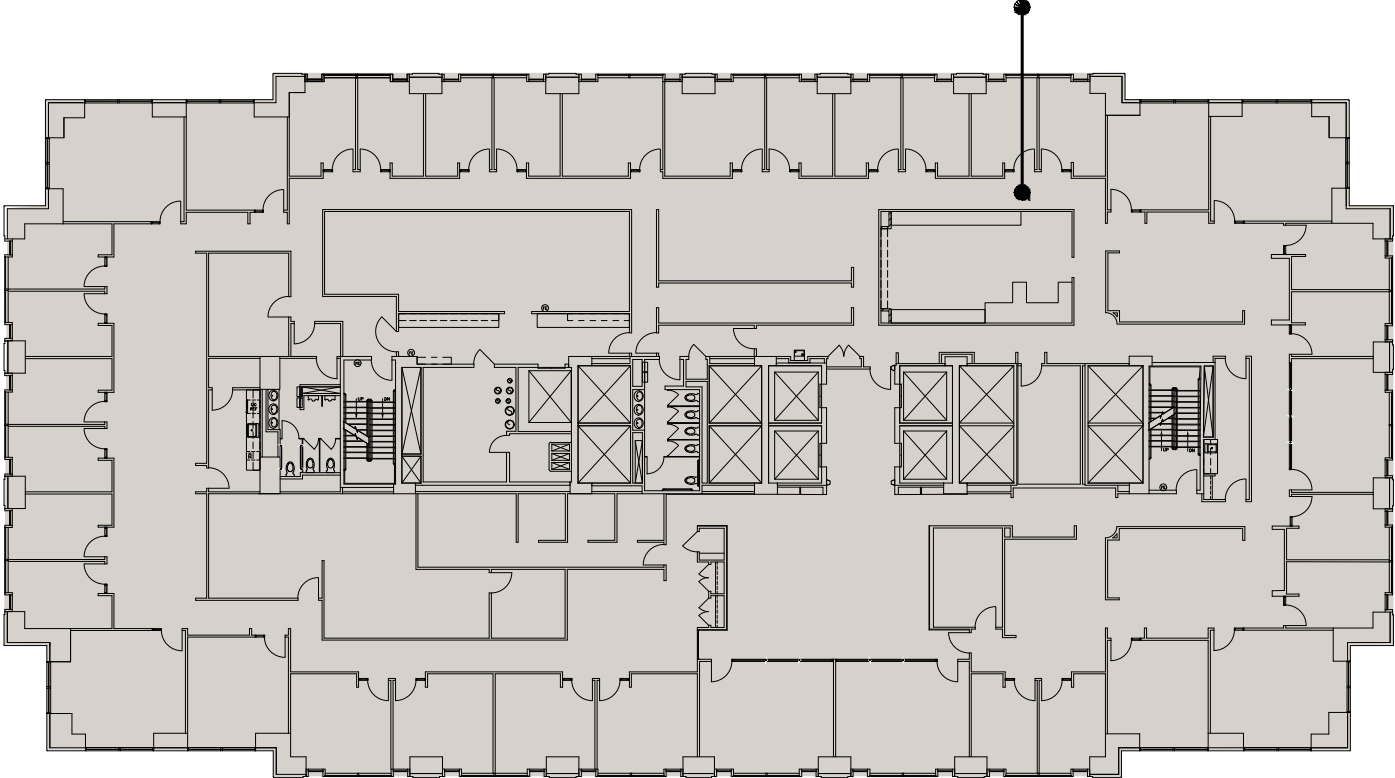
AVAILABLE  
SUITE 1100



# 13th FLOOR

20,189 SF

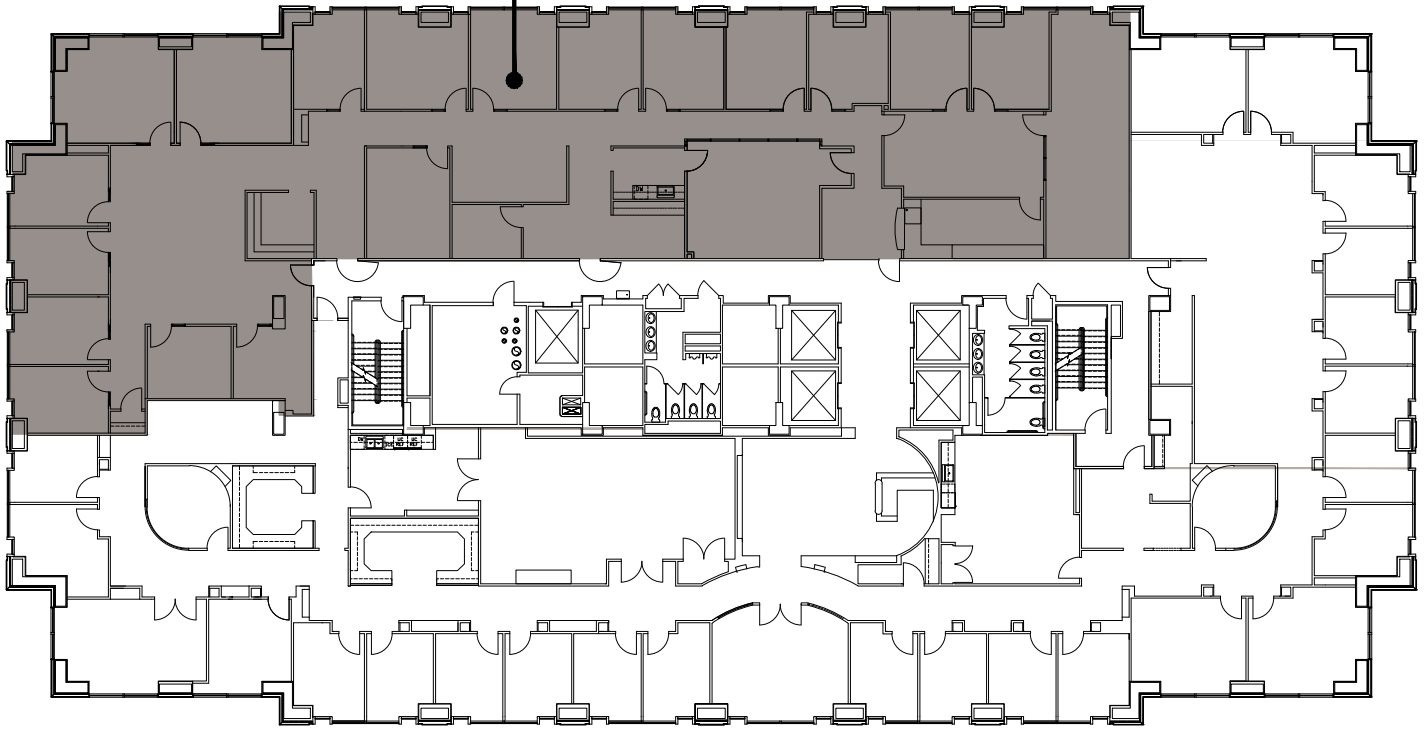
AVAILABLE  
SUITE 1300



# 22<sup>nd</sup> FLOOR

8,039 SF

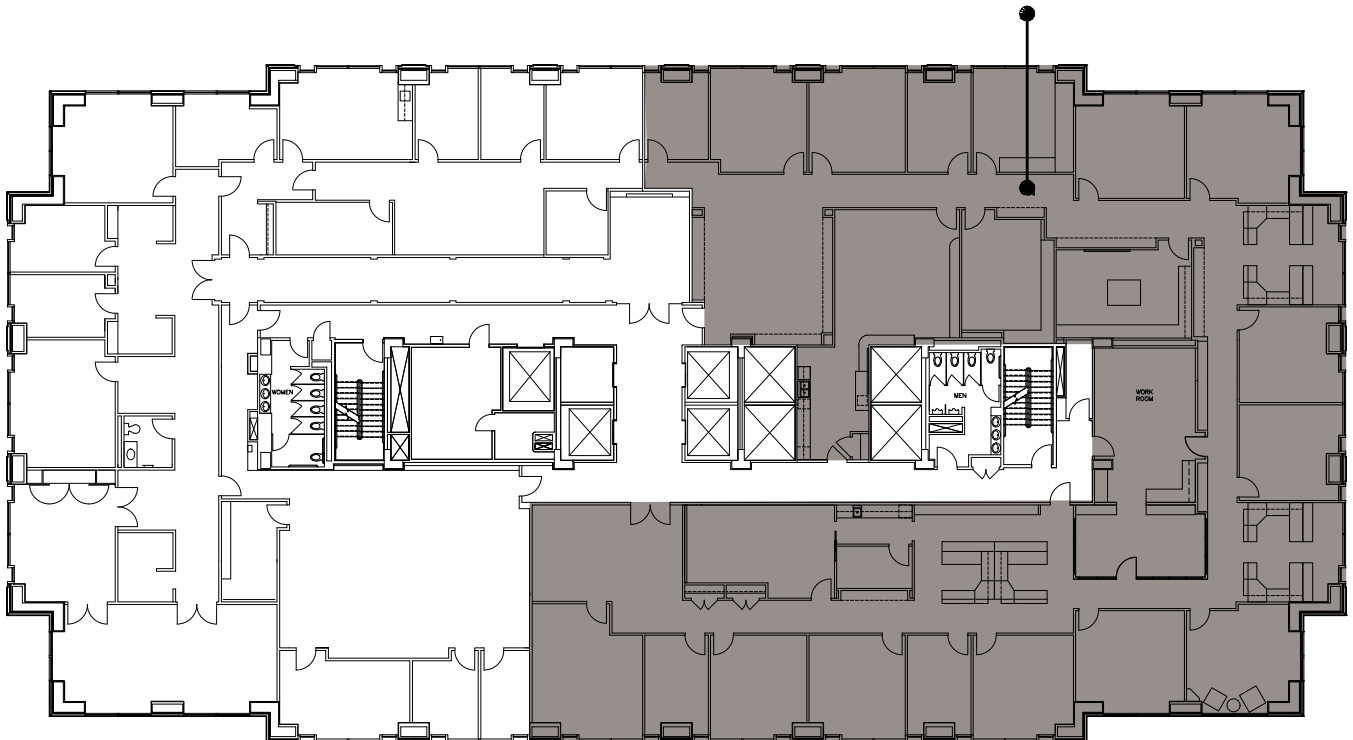
AVAILABLE  
SUITE 2200



# 23<sup>rd</sup> FLOOR

11,521 SF

AVAILABLE  
SUITE 2350



# PARKING MAP

1 QUEEN CITY SQUARE GARAGE  
2,288 SPACES

2 250 E 5TH STREET  
494 SPACES

3 580 WALNUT GARAGE  
450 SPACES

4 CENTER AT 600 VINE  
452 SPACES

5 FOUNTAIN SQUARE GARAGE NORTH  
604 SPACES

6 FOUNTAIN SQUARE GARAGE SOUTH  
408 SPACES

7 MABLEY PLACE  
775 SPACES

8 309 VINE STREET  
350 SPACES

9 312 WALNUT STREET  
590 SPACES

10 LOT #1644  
300 SPACES

11 THE BANKS GARAGE  
3,387 SPACES

12 443 E PETE ROSE WAY  
1,185 SPACES



# AMENITIES MAP



- 1 BOCCA; SOTTO; IGBYS; NADA; ARONOFF
- 2 MR. SUSHI; STARBUCKS; SILVER LADLE; PRIME CINCINNATI; TRATTORIA ROMA
- 3 VIA VITE; GRAETER'S ICE CREAM; BRU BURGER; ROCK BOTTOM; POTBELLY; SERVATII'S; PANERA; CHIPOTLE JIMMY JOHNS
- 4 SUBWAY; CURRITO
- 5 ORCHIDS AT PALM COURT; MORTONS STEAKHOUSE; STARBUCKS
- 6 STARBUCKS
- 7 SKYLINE; WICKED WICH
- 8 BURRITO JOE'S
- 9 O'MALLEYS IN THE ALLEY; THE BLIND PIG
- 10 PIES & PINTS; TASTE OF BELGIUM
- 11 HOWL AT THE MOON; HOLY GRAIL; TIN ROOF
- 12 YARDHOUSE
- 13 JEFFERSON SOCIAL; TERVIS; BURGER FI; JIMMY JOHNS; THE STRETCH; AC HOTEL; MOERLEIN LAGER HOUSE

# CBRE

## CONTACTS

Travis Likes  
First Vice President  
+1 513 369 1364  
travis.likes@cbre.com

Chris Carey  
Associate  
+1 513 369 1369  
chris.carey@cbre.com

© 2017 CBRE, Inc. This information has been obtained from sources believed reliable. We have not verified it and make no guarantee, warranty or representation about it. Any projections, opinions, assumptions or estimates used are for example only and do not represent the current or future performance of the property. You and your advisors should conduct a careful, independent investigation of the property to determine to your satisfaction the suitability of the property for your needs

Photos herein are the property of their respective owners and use of these images without the express written consent of the owner is prohibited. CBRE and the CBRE logo are service marks of CBRE, Inc. and/or its affiliated or related companies in the United States and other countries. All other marks displayed on this document are the property of their respective owners.

