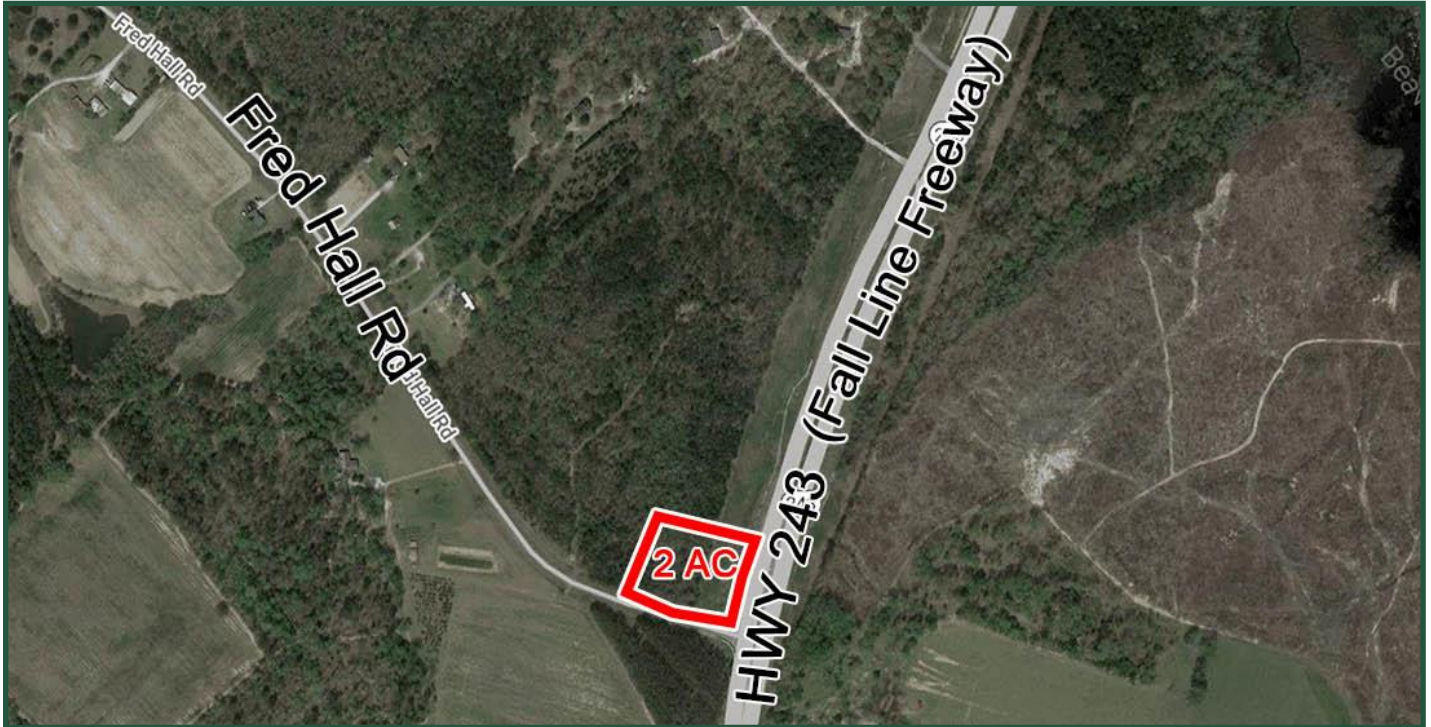


Commercial Lot

Highway 243 @ Fred Hall Road
Gordon, GA 31031 (Wilkinson Co)



Size: 2± Acres (Corner Lot)
Zoning: None
Utilities: Septic, County Water
Traffic: 3,630 VPD

Sales Price:
\$150,000

Notes: This site is located in the path of growth on the new Fall Line Freeway. The Fall Line Freeway goes from East to West connecting Columbus, Macon and Augusta. Ideal location for a retail store, strip center, restaurant and truck stop.

Heavy truck traffic. Home to Arcilla Mining & Land Company, B-H Transfer Company, BASF, CARBO Ceramics, Howard Sheppard Trucking, Industrial Machine & Welding, ISM Steel & Machinery, Mason Pallet Inc., MIC Steel, Mills Industrial Construction, Sellers Construction, SnowCo General Contractors, Unimin Corporation, and Zschimmer and Schwarz (under construction).

**FOR MORE
INFORMATION
CONTACT**

Trip Wilhoit, CCIM, ALC
478-746-9421 (O)
478-960-4080 (C)
trip@fickling.com

Patty Burns, CCIM, ALC
478-746-9421 (O)
478-951-5100 (C)
patty@fickling.com

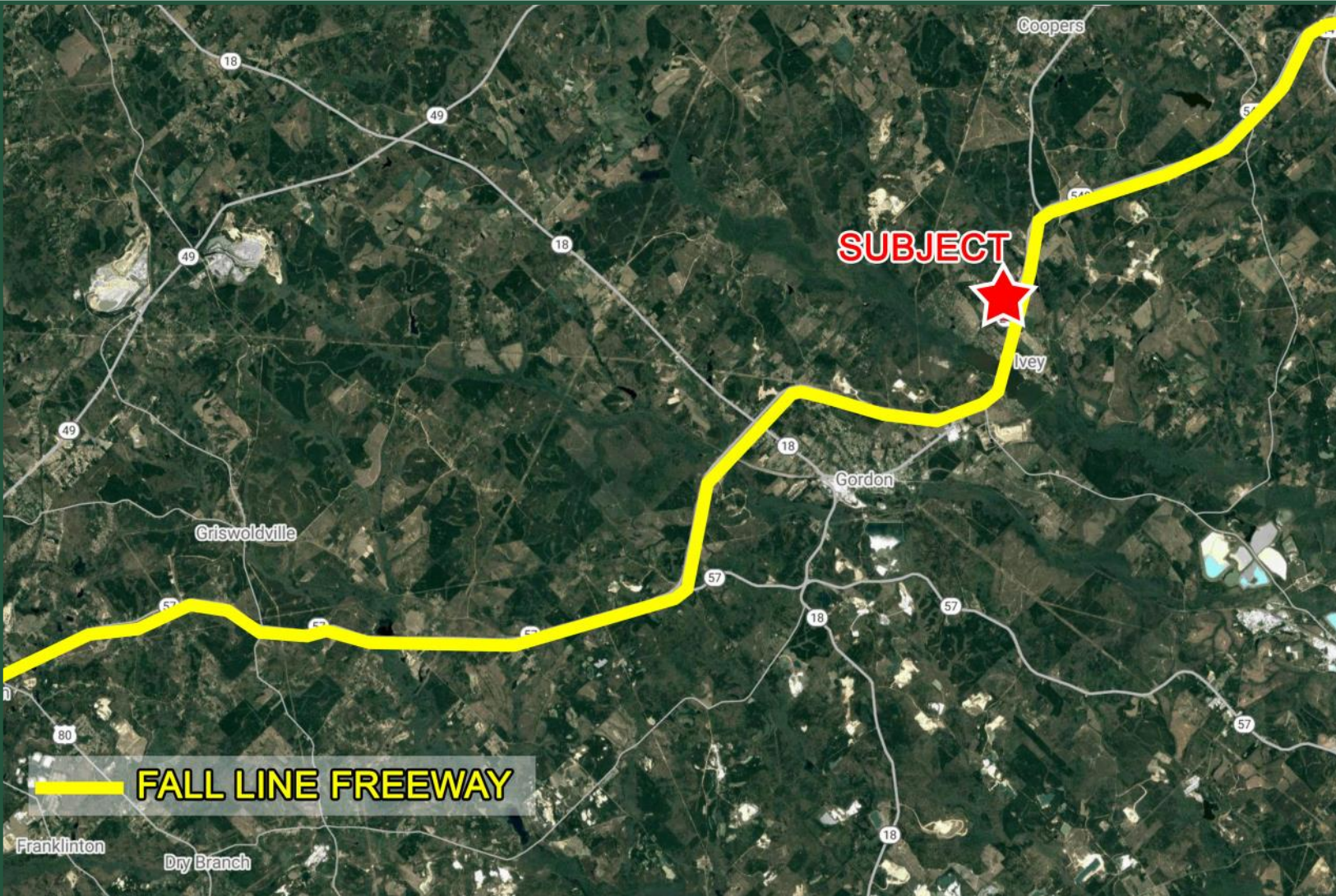
georgiacommercialrealestate.net | commercial.fickling.com

577 Mulberry St, Suite 1100 * P.O. Box 310 * Macon, GA 31202 | Phone (478) 746-9421 | Fax (478) 742-2015

This information is from resources deemed to be reliable, no warranties or guarantees for accuracy are made by Fickling and Company

Commercial Lot

Highway 243 @ Fred Hall Road
Gordon, GA 31031 (Wilkinson Co)



2018 Demos	5 Mile	10 Mile	15 Mile
Population	5,472	21,000	63,645
Avg. HHI	\$64,056	\$57,034	\$56,503
Median Age	38.5	38.8	36.3

**FOR MORE
INFORMATION
CONTACT**

Trip Wilhoit, CCIM, ALC
478-746-9421 (O)
478-960-4080 (C)
trip@fickling.com

Patty Burns, CCIM, ALC
478-746-9421 (O)
478-951-5100 (C)
patty@fickling.com

georgiacommercialrealestate.net | commercial.fickling.com

577 Mulberry St, Suite 1100 * P.O. Box 310 * Macon, GA 31202 | Phone (478) 746-9421 | Fax (478) 742-2015

This information is from resources deemed to be reliable, no warranties or guarantees for accuracy are made by Fickling and Company