

# 4 CHARLES PLACE

BUSHWICK, BROOKLYN



RETAIL SPACE  
FOR LEASE



# BUSHWICK BROOKLYN

# 4 CHARLES PLACE

## SPACE HIGHLIGHTS

### LOCATION

Between Myrtle Ave  
and Bushwick Ave

### SPACE

500 SF

### CEILING HEIGHT

10 FT

### FRONTAGE

12 FT

### DIMENSIONS

42 FT x 12 FT

### ZONING

R6/C2-3

### OCCUPANCY

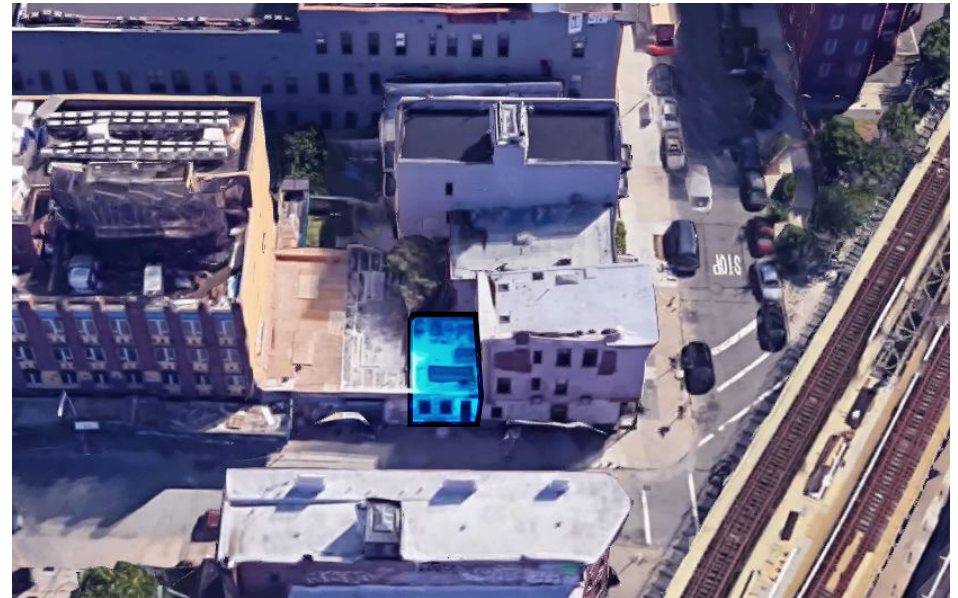
Immediate

### ASKING RENT

Upon Request

## HIGHLIGHTS

- Prime Bushwick
- High Traffic (Very busy intersection)
- Central Location
- Ideal for all usage
- Close proximity to J/M Subway lines



# BUSHWICK BROOKLYN

# 4 CHARLES PLACE

## EXISTING CONDITION



# BUSHWICK BROOKLYN

# 4 CHARLES PLACE

## NEIGHBORHOOD DEMOGRAPHICS



**183,227**

POPULATION  
WITHIN 1-MILE  
RADIUS

---



**35 Years**

AVERAGE  
POPULATION  
AGE

---



**10.35%**

POPULATION  
GROWTH  
SINCE 2010

---



**\$64,974**

AVERAGE HHI  
WITHIN 1-MILE  
RADIUS

---



**4,361**

TOTAL BUSINESSES  
WITHIN 1-MILE  
RADIUS

---



**\$1.2 bn**

ANNUAL SPENDING  
WITHIN 1-MILE  
RADIUS

---



# BUSHWICK BROOKLYN

# 4 CHARLES PLACE

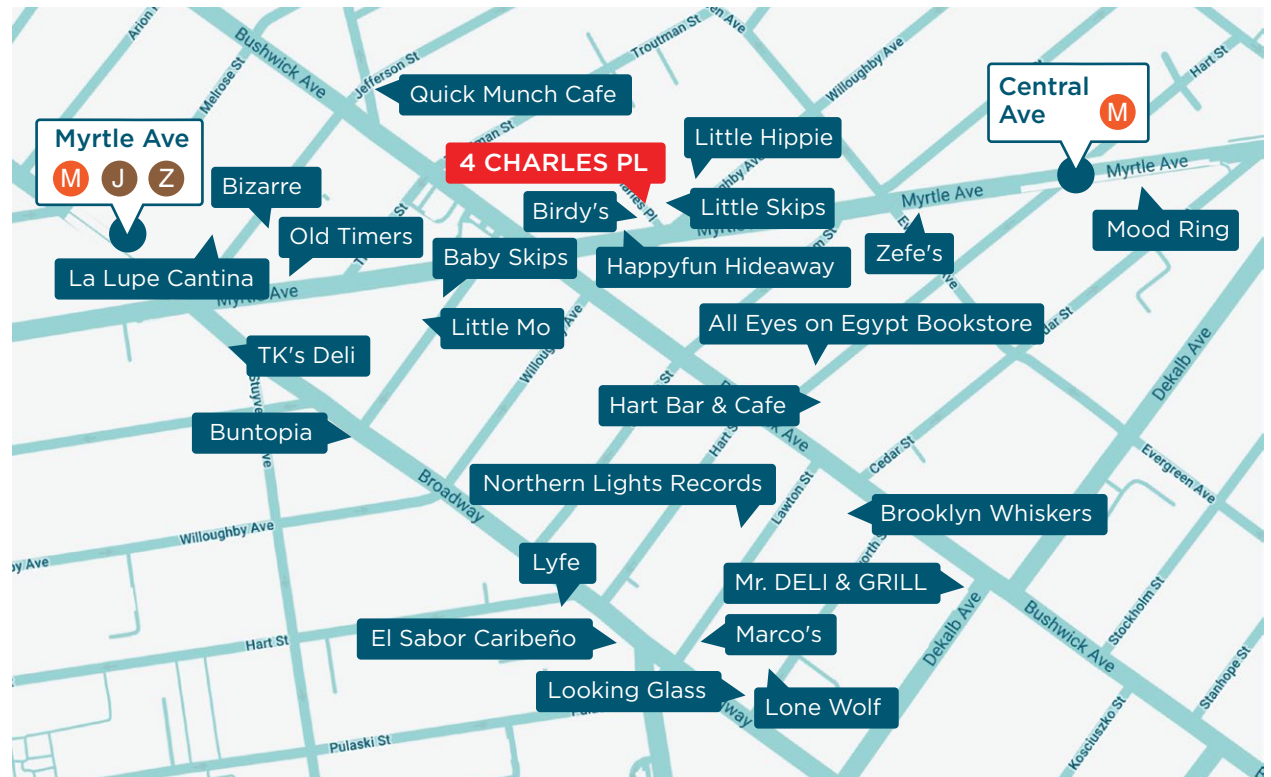
## NEIGHBORHOOD & TRANSPORTATION

### NEIGHBORHOOD TENANTS

- Little Skips
- Birdy's
- Hart Bar & Cafe
- Lone Wolf
- Looking Glass
- Zefe's
- Little Hippie
- Baby Skips
- Happyfun Hideaway
- Little Mo
- Old Timers
- Bizarre
- Mood Ring
- Brooklyn Whiskers
- Mr. DELI & GRILL
- TK's Deli
- La Lupe Cantina
- Quick Munch Cafe
- Buntopia
- Lyfe
- Marco's
- Northern Lights Records
- All Eyes on Egypt Bookstore

### TRANSPORTATION

- 5 Min Walk at Myrtle Avenue (0.2 mi)
- 6 Min Walk at Central Avenue (0.3 mi)
- 9 Min Walk at Kosciuszko Street (0.4 mi)
- 16 Min Walk at Morgan Avenue (0.8 mi)



# BUSHWICK BROOKLYN

# 4 CHARLES PLACE

## CONTACT



JOHN BLAISE  
201-844-2773  
[jblaise@exrny.com](mailto:jblaise@exrny.com)

