

FOR SUBLEASE - PLUG & PLAY

# CATALINA TERRACES

7878 N 16TH STREET, SUITE 100 & 215  
PHOENIX, AZ 85020



## CONTACT US

### **ASHLEY BROOKS**

Senior Vice President  
+1 602 735 1758  
ashley.brooks@cbre.com

### **KATE MORRIS**

First Vice President  
+1 602 735 1790  
kate.morris@cbre.com

[www.cbre.us](http://www.cbre.us)

**CBRE**

# FOR SUBLEASE CATALINA TERRACES

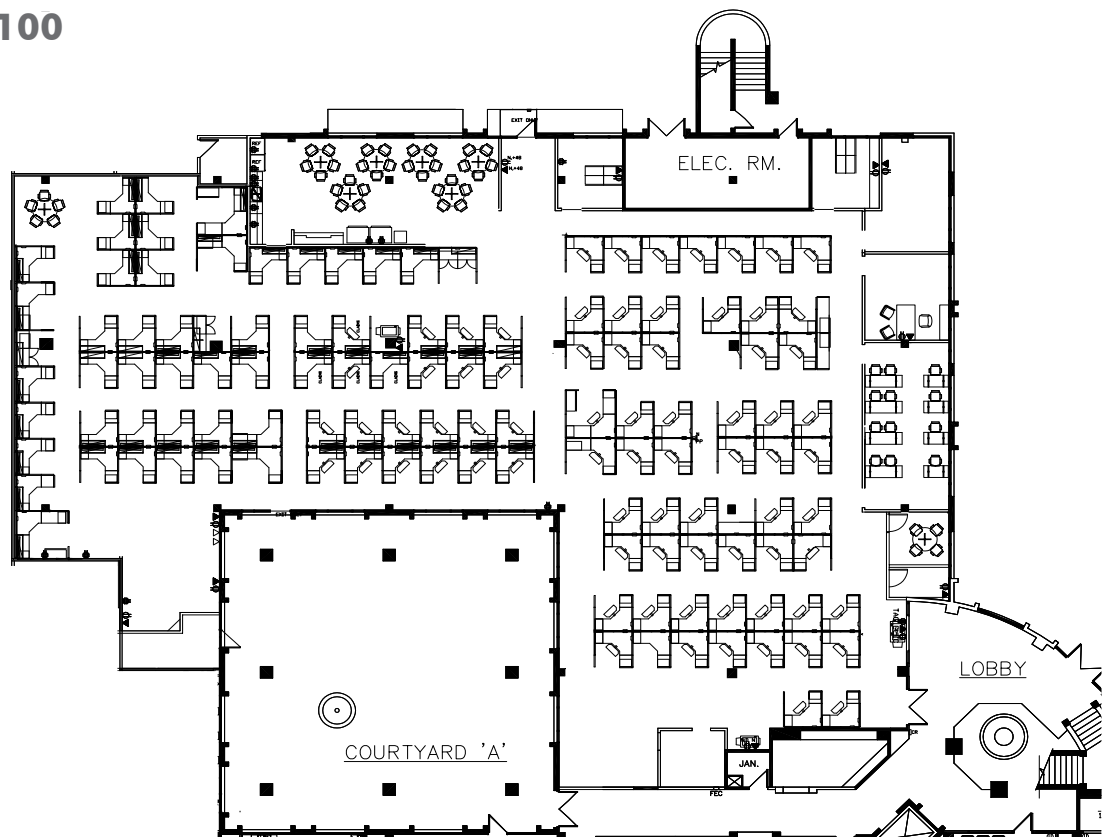


## SPACE FEATURES

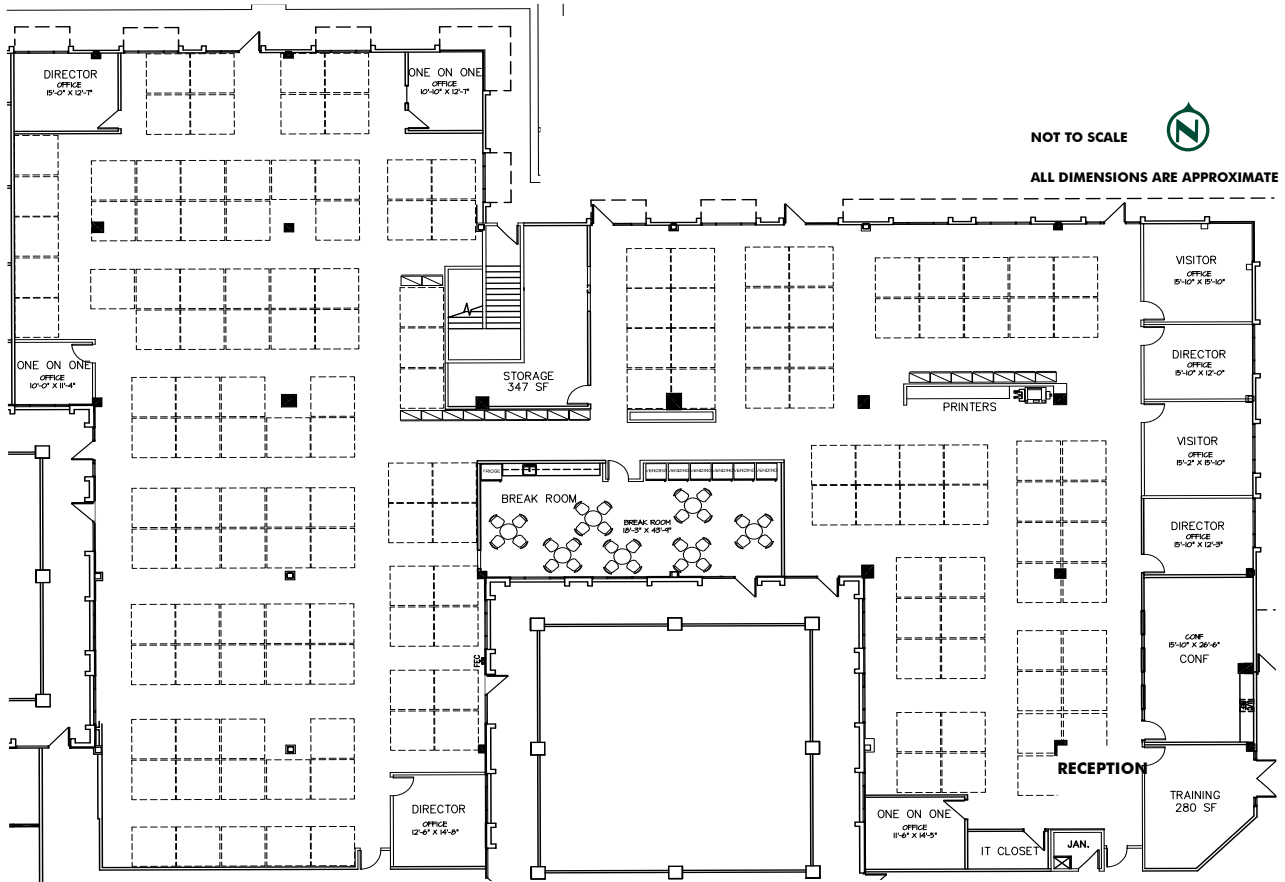
- + Suite 100: ±13,484 SF
- + Suite 215: ±18,990 RSF. Square footage is subject to verification
- + Lease Expiration: 11/30/2019
- + 157 6x6 workstations in place in Suite 215
- + 123 6x6 workstations in place in Suite 100
- + Cubicle manufacturer Haworth, office furniture and chairs Global
- + Office/conference furniture is available as part of sublease
- + Signage available
- + Convenient access to Northern Ave & SR 51
- + Close to retail, restaurants and hotels
- + Natural light throughout space
- + 5.5/1000 Parking ratio including 29 covered/reserved



## SUITE 100



SUITE 215





# FOR SUBLEASE CATALINA TERRACES

7878 N 16TH STREET  
PHOENIX, AZ 85020



NOT TO SCALE



## CONTACT US

### ASHLEY BROOKS

Senior Vice President  
+1 602 735 1758  
ashley.brooks@cbre.com

### KATE MORRIS

First Vice President  
+1 602 735 1790  
kate.morris@cbre.com

© 2017 CBRE, Inc. All rights reserved. This information has been obtained from sources believed reliable, but has not been verified for accuracy or completeness. You should conduct a careful, independent investigation of the property and verify all information. Any reliance on this information is solely at your own risk. CBRE and the CBRE logo are service marks of CBRE, Inc. All other marks displayed on this document are the property of their respective owners. Photos herein are the property of their respective owners. Use of these images without the express written consent of the owner is prohibited.