

AERIAL



PROPERTY OVERVIEW

- Best value in Downtown
- Flexible lease terms
- Turn-key deals
- Numerous food carts within walking distance
- Parking available nearby at 1:1,000 SF

CONTACT Josh Schweitz
503.221.2297
josh@kiddermathews.com

Travis Parrott
503.721.27.35
tparrott@kiddermathews.com

CONTACT Josh Schweitz
503.221.2297
josh@kiddermathews.com

Travis Parrott
503.721.27.35
tparrott@kiddermathews.com

AVAILABILITIES

SUITE	RSF	RATE
155	595	\$25.00
316	3,445	\$25.00
318	566	\$25.00
402	570	\$25.00
420	3,190	\$25.00
500	30,223 (divisible)	\$25.00



FEATURES

- Portland bike share just steps outside the building

- Bike parking available in basement

- 24/7 on-site security

- On-site management

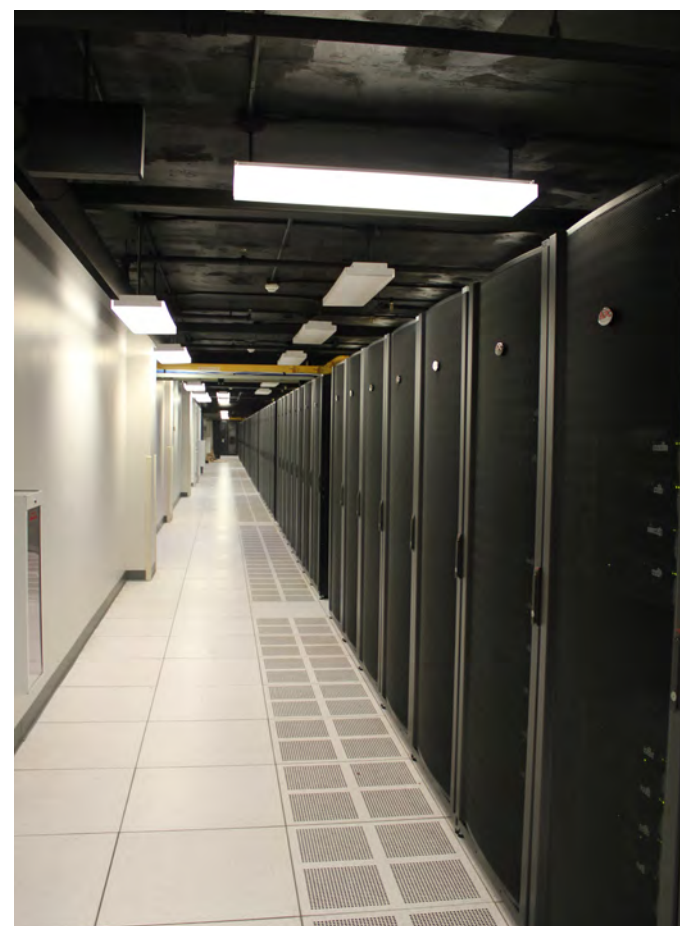
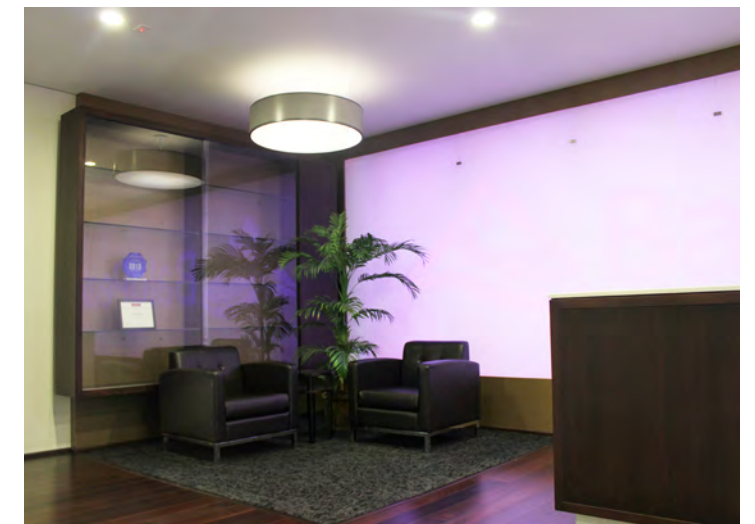
- Operable windows

- On-site retail

- Historic downtown building spanning full city block

- Three complimentary conference rooms available in building

- Just two blocks south of the Pearl District



DATA CENTER

- Site of Portland's Internet Exchange Point (IEP)

- Offers most internet service providers in the city

- Offers highest bandwidth capability at lowest cost in Oregon

- Ability to collocate server within data center space in building

