

6795-6825

East Tennessee Ave
Denver, CO 80224

DENVER

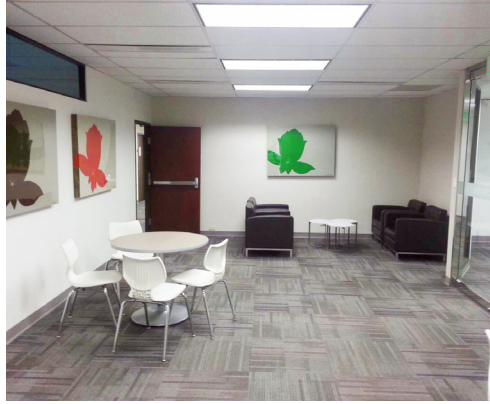


Leasing@BoxerProperty.com

303-422-RENT (7368)

www.BoxerProperty.com

PROPERTY SUMMARY



6795 - 6825 EAST TENNESSEE AVE Denver, CO 80224

BUILDING AMENITIES

- Suites available in a wide range of sizes & configurations
- Ample parking
- 24-hour secure key card access
- Security cameras & video surveillance
- On-site maintenance, management, & leasing
- Tenant conference rooms

AREA AMENITIES

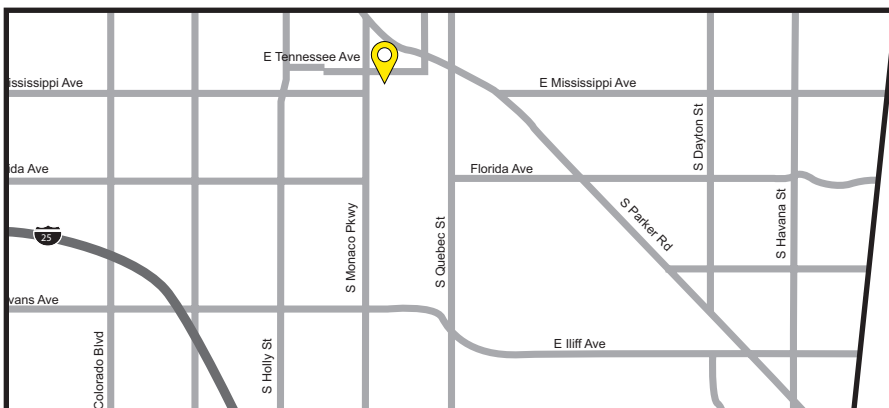
- Downtown Denver, Tech Center, & Cherry Creek Shopping Center
- Restaurants, shopping, hotels, & banks nearby
- Easy access to I-225 & I-25
- RTD bus line

DIRECTIONS

Traveling Northwest on I-25, turn right onto E Hamden Ave, turn left onto S Monaco Pkwy, turn right onto E Tennessee Ave, properties will be on the left

THE BOXER ADVANTAGE

- Janitorial service & maintenance included in rent
- Competitive rental rates
- Flexible lease terms
- Short & simple lease
- Move-in ready space options
- Free in-house space planning services
- Flexible expansion opportunities
- Tenant tools available via website & mobile app



SCHEDULE A TOUR TODAY

303.422.RENT (7368)

Leasing@BoxerProperty.com

www.BoxerProperty.com

BOXER PROPERTY®