

FOR LEASE

140<sup>th</sup>

PLAZA

14030 NE 24th St. | Bellevue, WA 98007

**David Marks**

Director

425.753.6759

david.marks@nmrk.com

**Mike Schreck**

Executive Managing Director

206.850.7000

mike.schreck@nmrk.com

**NEWMARK**





# Building Highlights

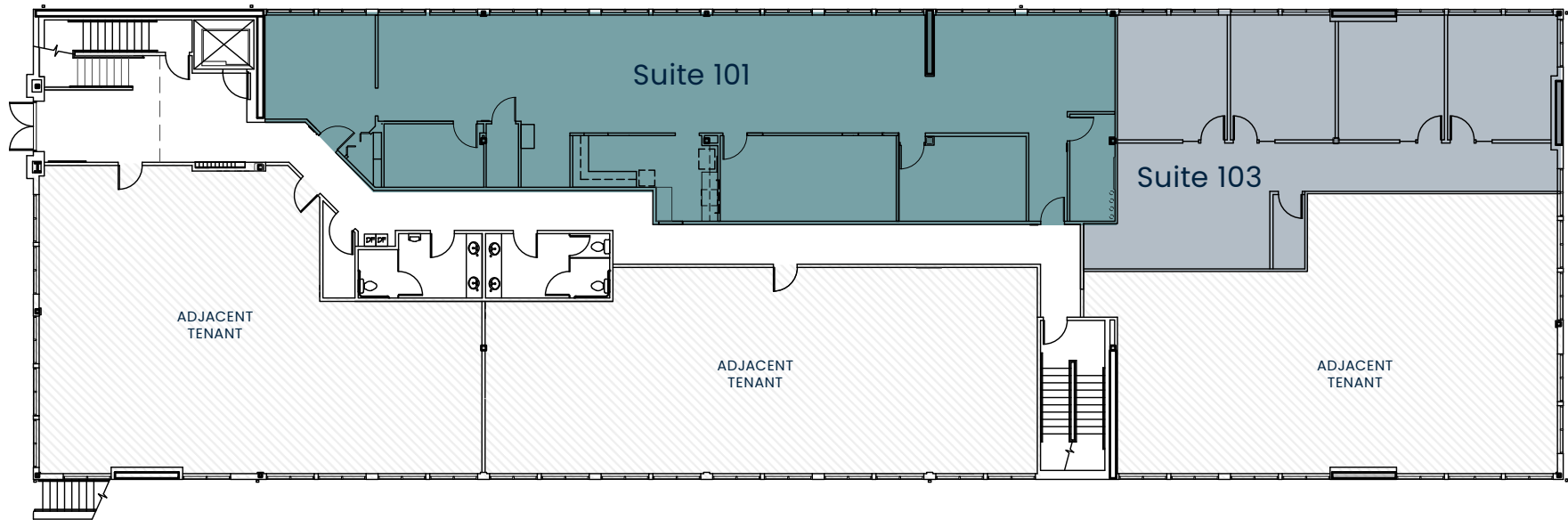
- 2-story medical/office building
- Easy access to SR-520
- Surface and Covered Parking (4.15/1,000 SF)
- Near Microsoft World Headquarters
- Close to retail and restaurant amenities



# First Floor

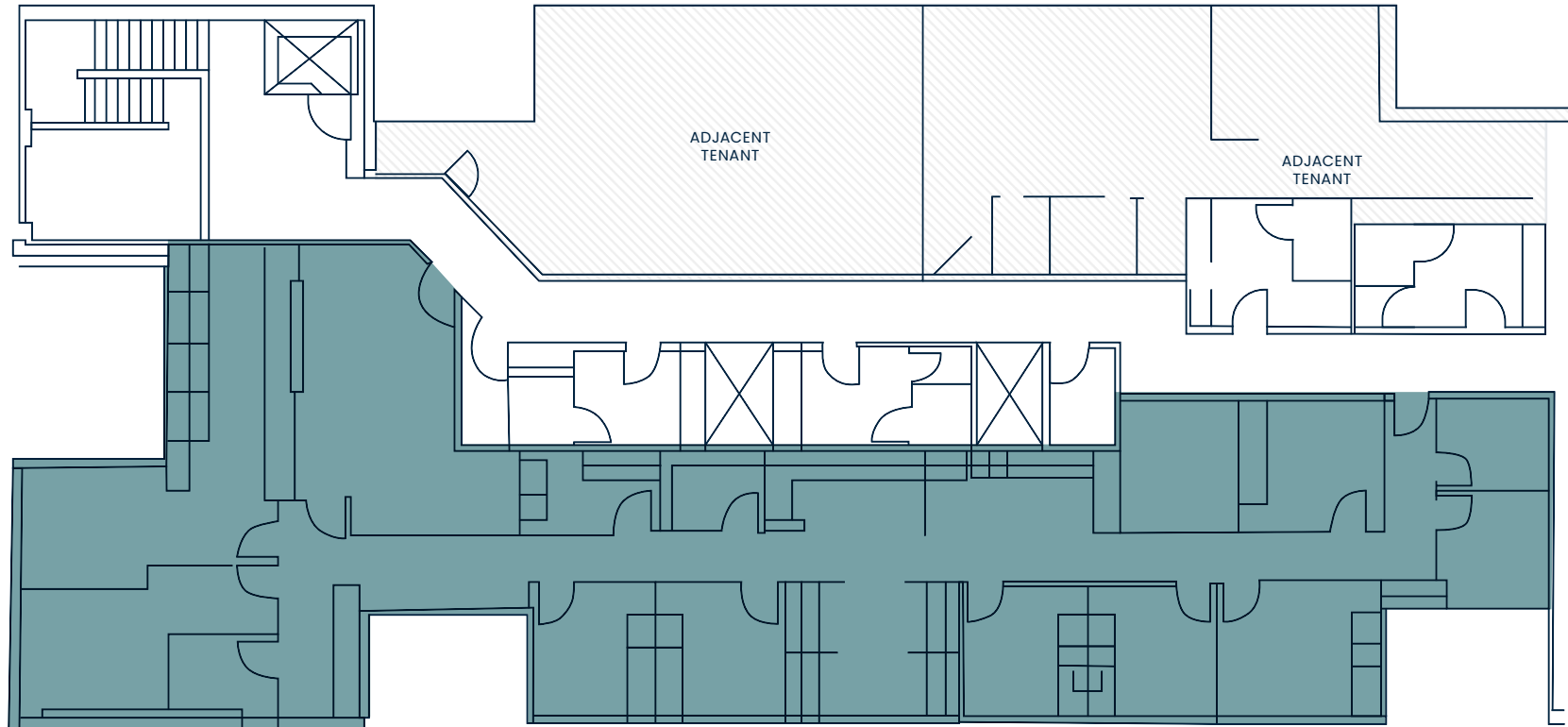
<b>Suite 101*</b>	2,886 SF	Traditional Office	Available June 1st, 2022
<b>Suite 103*</b>	1,469 SF	Traditional Office	Available Now

\***Suites 101** and **103** can be combined for a total of 4,355 SF.



# Second Floor

**Suite 200**   3,568 SF   Medical Office   Available Now



# 140<sup>th</sup>

— PLAZA —

## **David Marks**

Director

425.753.6759

[david.marks@nmrk.com](mailto:david.marks@nmrk.com)

## **Mike Schreck**

Executive Managing Director

206.850.7000

[mike.schreck@nmrk.com](mailto:mike.schreck@nmrk.com)

# NEWMARK

The distributor of this communication is performing acts for which a real estate license is required. The information contained herein has been obtained from sources deemed reliable but has not been verified and no guarantee, warranty or representation, either express or implied, is made with respect to such information. Terms of sale or lease and availability are subject to change or withdrawal without notice. 18-1023