

FOR LEASE

301 High Street, Palo Alto, CA



PREMIER
PROPERTIES
COMMERCIAL REAL ESTATE



DOWNTOWN PALO ALTO CLASS-A RETAIL FOR LEASE
±1,772 Sq. Ft. - Available Immediately

JON GOLDMAN
Partner

Phone: 650.618.3003
jon.goldman@prprop.com
bre license #01295503

BRAD EHIKIAN
Partner

Phone: 650.618.3001
brad.ehikian@prprop.com
bre license #01736391

JESSE EBNER
Associate

Phone: 650.618.3017
jesse.ebner@prprop.com
bre license #02055989

FOR PROPERTY DETAILS AND MORE LISTINGS

PremierPaloAlto.com

FOR LEASE

301 High Street, Palo Alto, CA



PREMIER
PROPERTIES
COMMERCIAL REAL ESTATE

PROPERTY DESCRIPTION

- Class-A Building Built in 2015
- Impressive Architecture, High-End Finishes & Modern Building
- Ground Floor Retail Space For Lease: \pm 1,772 Sq. Ft.
- Exposed Concrete Floors
- Private Restroom
- Great Window Line
- LED Lighting, Pre-Wired for Phones, Network & Sound
- On-Site Private Parking Lot
- Walking Distance to Downtown Amenities, Restaurants & One Block from Caltrain Station



JON GOLDMAN
Partner

Phone: 650.618.3003
jon.goldman@prprop.com
bre license #01295503

BRAD EHIKIAN
Partner

Phone: 650.618.3001
brad.ehikian@prprop.com
bre license #01736391

JESSE EBNER
Associate

Phone: 650.618.3017
jesse.ebner@prprop.com
bre license #02055989

FOR PROPERTY DETAILS AND MORE LISTINGS

PremierPaloAlto.com

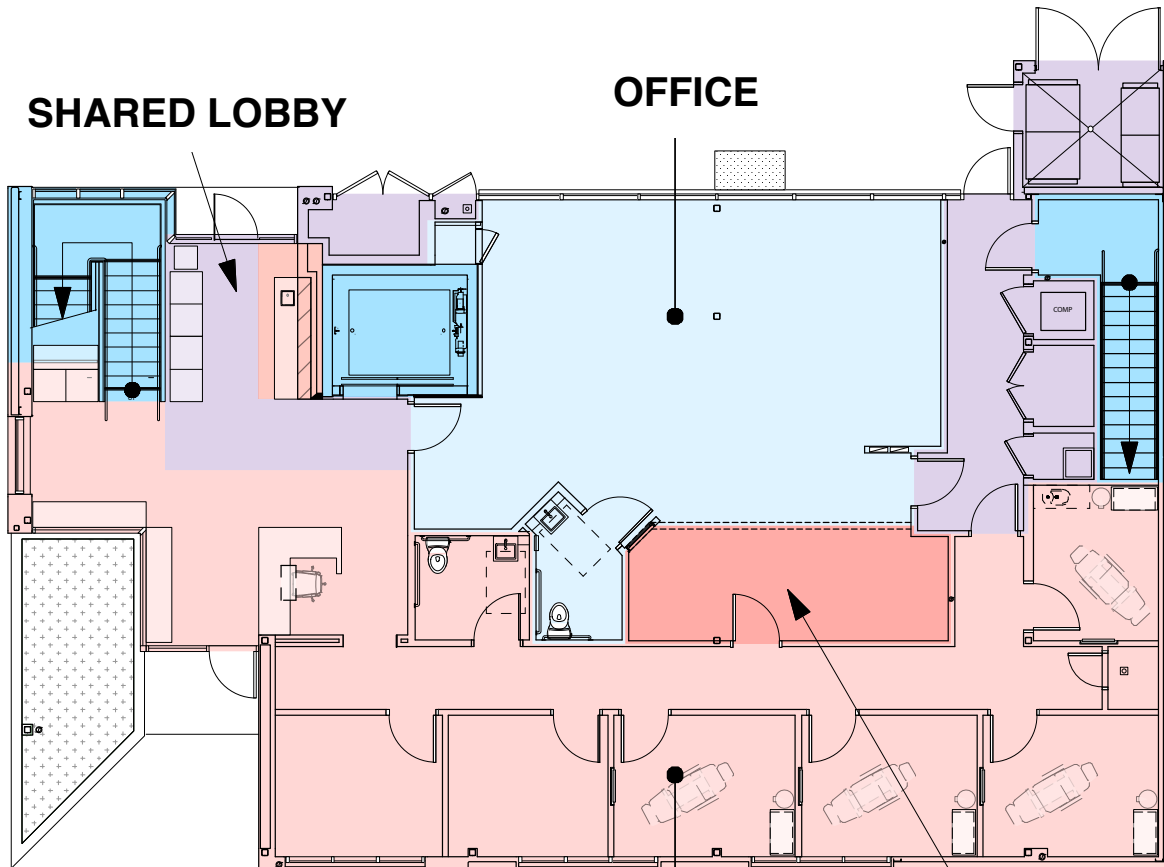
FOR LEASE

301 High Street, Palo Alto, CA



PREMIER
PROPERTIES
COMMERCIAL REAL ESTATE

PROPOSED FLOOR PLAN - FIRST FLOOR



**RETAIL AVAILABLE
±1,772 SQ. FT.**

MAY NOT BE ACCURATE / TO SCALE

BRAD EHIKIAN
Partner

Phone: 650.618.3001
brad.ehikian@prprop.com
bre license #01736391

JON GOLDMAN
Partner

Phone: 650.618.3003
jon.goldman@prprop.com
bre license #01295503

JESSE EBNER
Associate

Phone: 650.618.3017
jesse.ebner@prprop.com
bre license #2055989

FOR PROPERTY DETAILS AND MORE LISTINGS

PremierPaloAlto.com

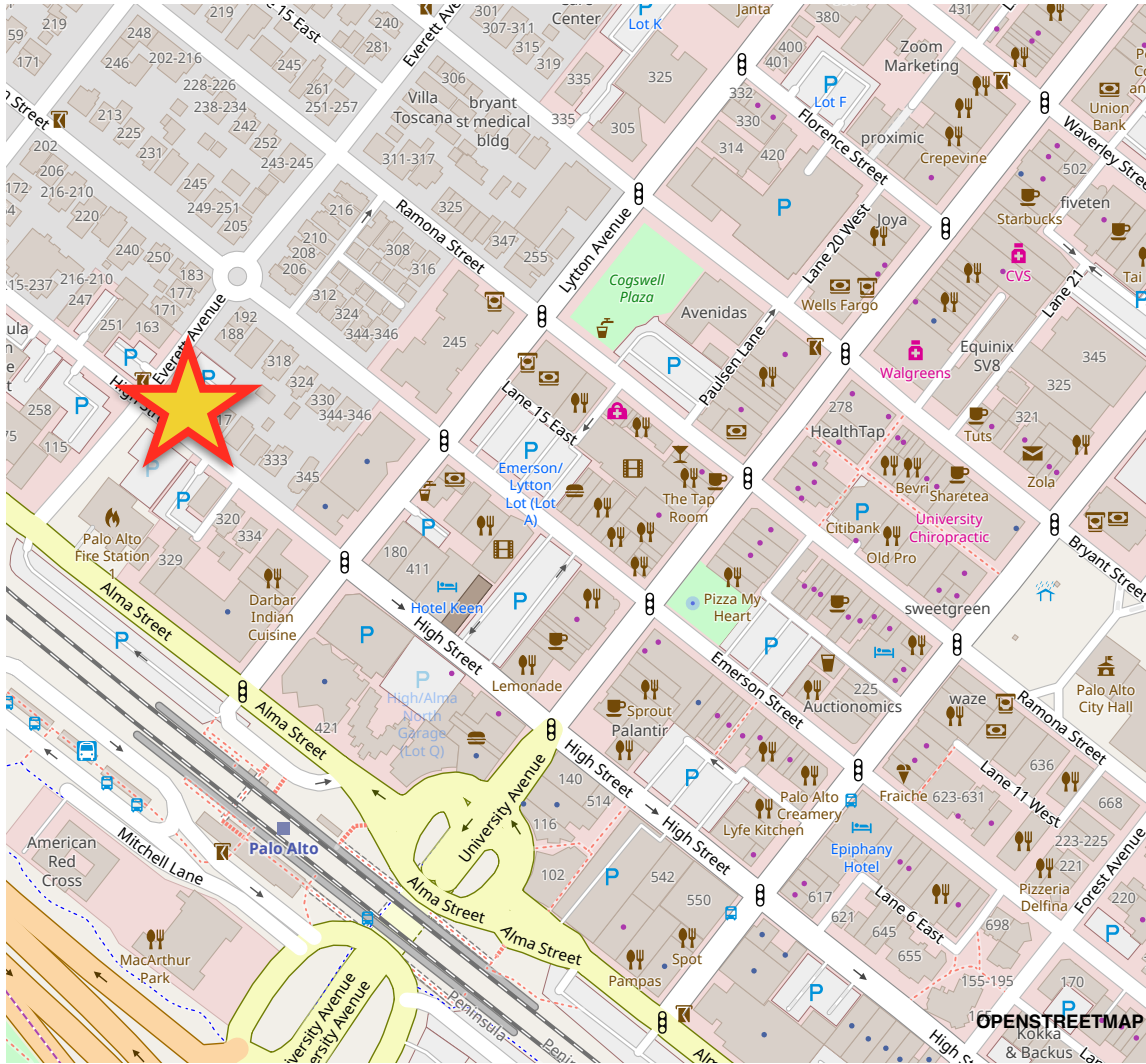
FOR LEASE

301 High Street, Palo Alto, CA



PREMIER
PROPERTIES
COMMERCIAL REAL ESTATE

SITE LOCATION



Neither the property owner nor Premier Property Management make any representation or warranty with regard to the information contained within this advertising flyer and the information contained herein should not be relied upon for validity, accuracy or completeness. Prior to submitting an offer, prospective purchasers or tenants should perform their own due diligence including consultation with their legal and tax counsel in order to arrive at an independent evaluation of the property.

BRAD EHIKIAN
Partner

Phone: 650.618.3001
brad.ehikian@prprop.com
bre license #01736391

JON GOLDMAN
Partner

Phone: 650.618.3003
jon.goldman@prprop.com
bre license #01295503

JESSE EBNER
Associate

Phone: 650.618.3017
jesse.ebner@prprop.com
bre license #02055989

FOR PROPERTY DETAILS AND MORE LISTINGS

PremierPaloAlto.com