

Weyman Plaza

300 Weyman Road, Pittsburgh, PA 15236



Available Premises

Ground Floor

- 500 RSF

Second Floor

- 869 RSF
- 1,612 RSF

Third Floor

- 2,035 RSF

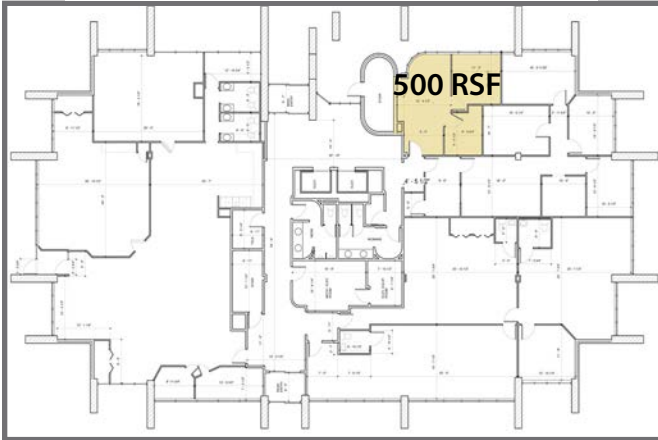
Fourth Floor

- 2,276 RSF

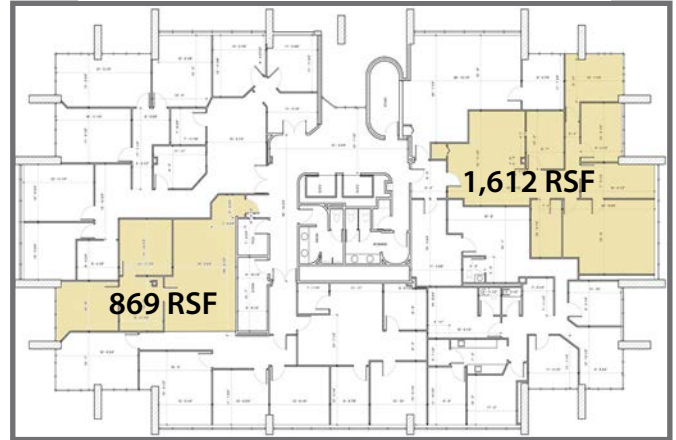
Property Highlights

- 4-Stories - 40,857 SF Total
- Class A Office Building
- Extremely convenient location - just steps from Caste Village in the heart of the South Hills marketplace - offering easy access to shopping, banking and a variety of eateries
- Aggressive rental rates and build-out packages
- Free and abundant parking
- Flexible floor plan providing extensive natural light
- Professional management

Ground Floor



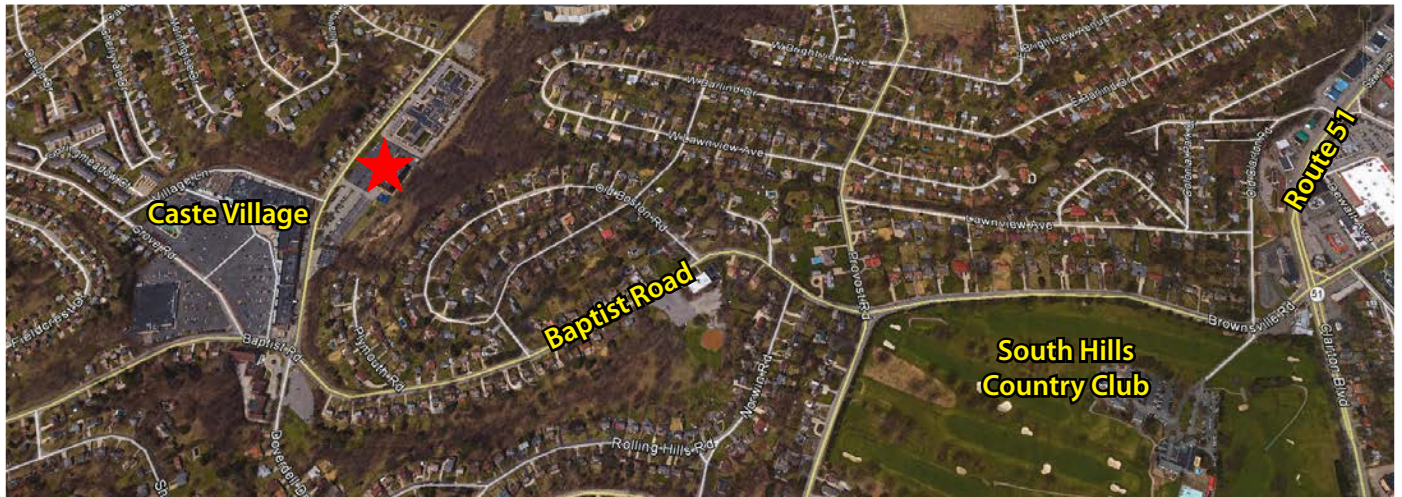
Second Floor



Third Floor



Fourth Floor



For more information please contact:

Spencer L. Baker
Associate

Oxford Realty Services, Inc.
412.261.0200, ext 3460
sbaker@oxfordrealtyservices.com

Taylor N. Iaboni
Associate

Oxford Realty Services, Inc.
412.261.0200, ext 3493
tiaboni@oxfordrealtyservices.com

OXFORD
REALTY SERVICES, INC.

2545 Railroad Street - Suite 300
Pittsburgh, PA 15222
www.oxfordrealtyservices.com

Although all information furnished regarding property for sale, rental or financing is from sources deemed reliable, such information has not been verified, and no express representation is made nor is any to be implied as to the accuracy thereof, and it is submitted subject to errors, omissions, change of price, rental or other conditions, prior sale, lease or financing, or withdrawal without notice. Rental terms and all dimensions are approximate and specifications are subject to change without notice. Oxford Realty Services, Inc., an independent real estate services company.