

Golden Triangle Industrial Park - Building B

4850 Statz Street, Suite 103 | North Las Vegas, NV 89081



PROPERTY FEATURES

- ±5,050 SF Existing Office Space
- 7,500 Amps available thru two switch gears
- 277/480 Volts, 3-Phase Power, 4-Wire Electrical
- ±30' Clear Height
- ESFR Fire Sprinkler System
- Nineteen (19) Dock High Loading Doors
- Ten (10) Dock Levelers
- One (1) Grade Level Loading Door
- M-2 Zoning
- 50' x 52' Column Spacing

Donna Alderson
Executive Managing Director
+1 702 683 3330
donna.alderson@cushwake.com
LIC #S.0017096

Tina Bartholomew
Brokerage Specialist
+1 702 605 1738
tina.bartholomew@cushwake.com
LIC #S.0172715

Cushman & Wakefield | Las Vegas
6725 Via Austi Parkway, Suite 275
Las Vegas, NV 89119
Main +1 702 796 7900
cushmanwakefield.com

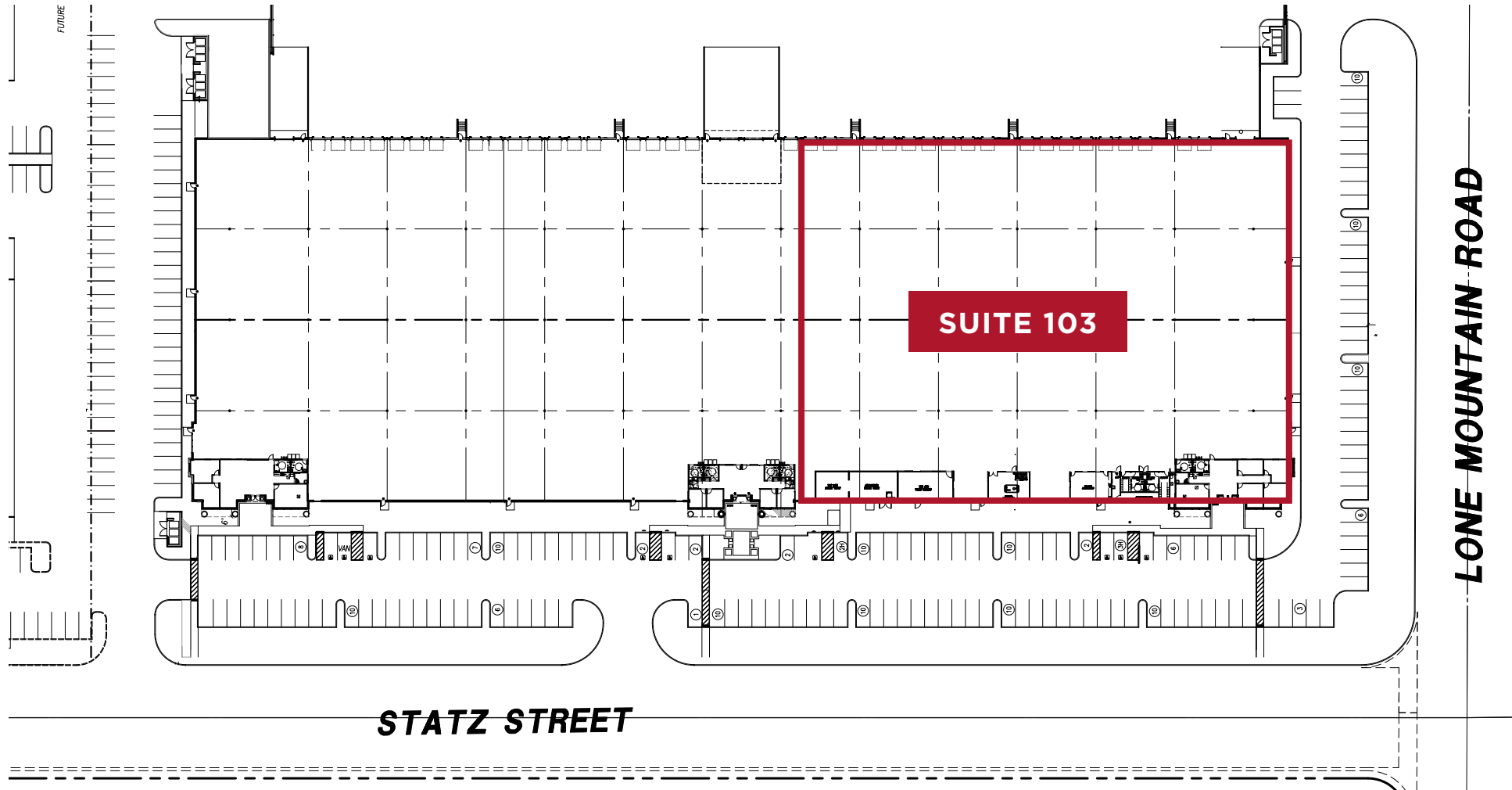




Golden Triangle Industrial Park - Building B

4850 Statz Street, Suite 103 | North Las Vegas, NV 89081

SITE PLAN

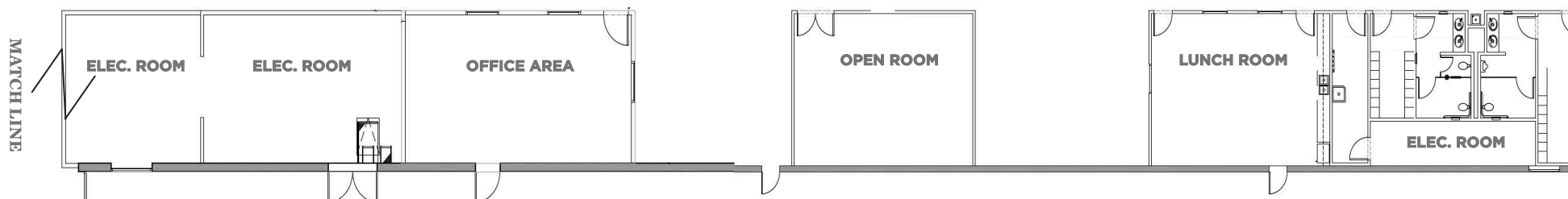
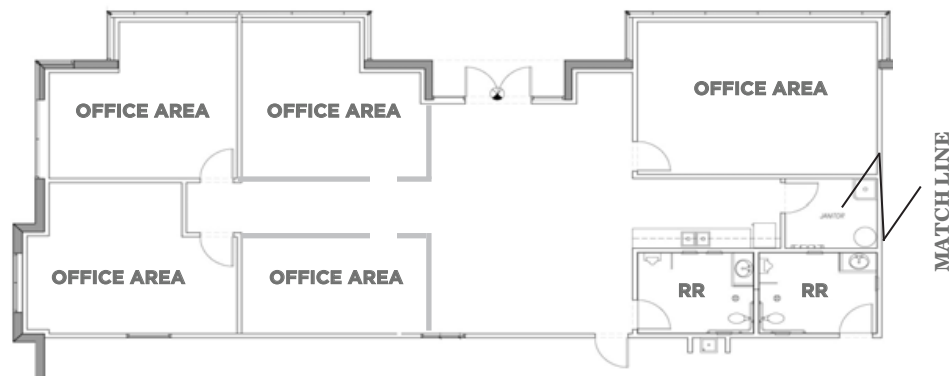


Donna Alderson
Executive Managing Director
+1 702 683 3330
donna.alderson@cushwake.com
LIC #S.0017096

Tina Bartholomew
Brokerage Specialist
+1 702 605 1738
tina.bartholomew@cushwake.com
LIC #S.0172715

Cushman & Wakefield | Las Vegas
6725 Via Austi Parkway, Suite 275
Las Vegas, NV 89119
Main +1 702 796 7900
cushmanwakefield.com

OFFICE LAYOUT



Donna Alderson
Executive Managing Director
+1 702 683 3330
donna.alderson@cushwake.com
LIC #S.0017096

Tina Bartholomew
Brokerage Specialist
+1 702 605 1738
tina.bartholomew@cushwake.com
LIC #S.0172715

Cushman & Wakefield | Las Vegas
6725 Via Austi Parkway, Suite 275
Las Vegas, NV 89119
Main +1 702 796 7900
cushmanwakefield.com