



Super 8

1202 & 801 S. Kniss Avenue, Luverne, MN 56156

Property Features

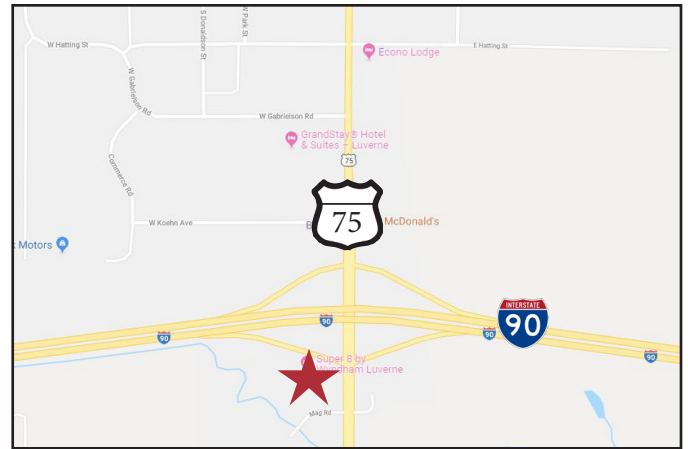
- Building size: 7,710 sq. ft.
- Lot size: 2.28 acres (99,123 sq. ft.)
- 36 rooms
- 50 paved, on-site parking spaces
- Year built: 1979
- 2018 Room Revenue: \$380,189
- ADR: \$63.55
- Occupancy Rate: 46.26%
- Rev Par: \$25.59

Pricing

- Super 8 list price: \$850,000 (\$23,611.11/ key)
- 2018 Real Estate Taxes: \$7,839.72

Location

- Located just off of I-90 in Luverne, MN
- Area neighbors include: Bluestem Restaurant, McDonald's, Holiday Station, Taco John's, Vern Drive-In



Dennis Breske

Senior Vice President

605 444 7100 direct

605 310 6666 mobile

dbreske@naisiouxfalls.com



Dale Zomer

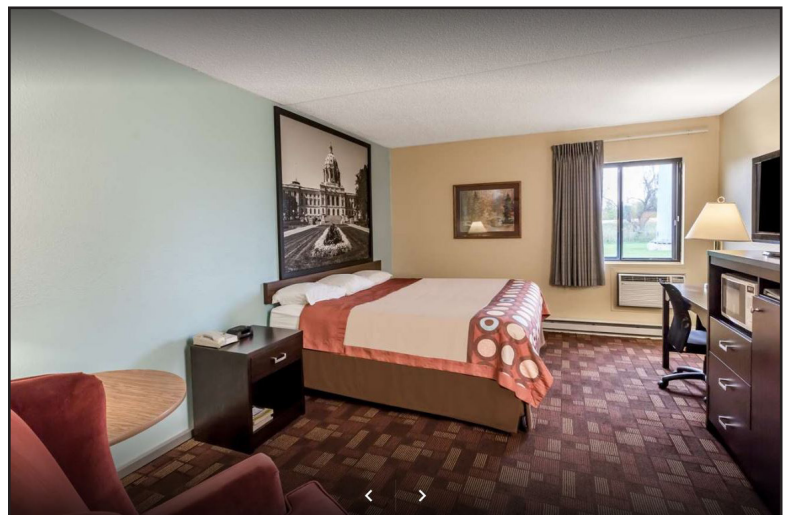
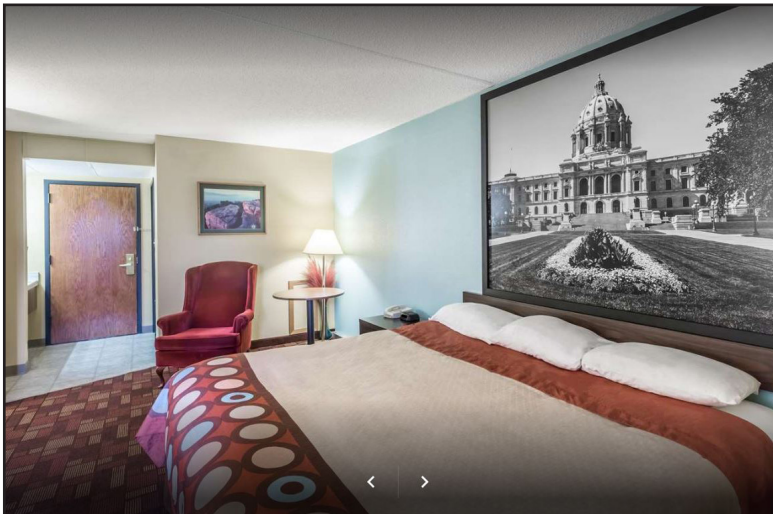
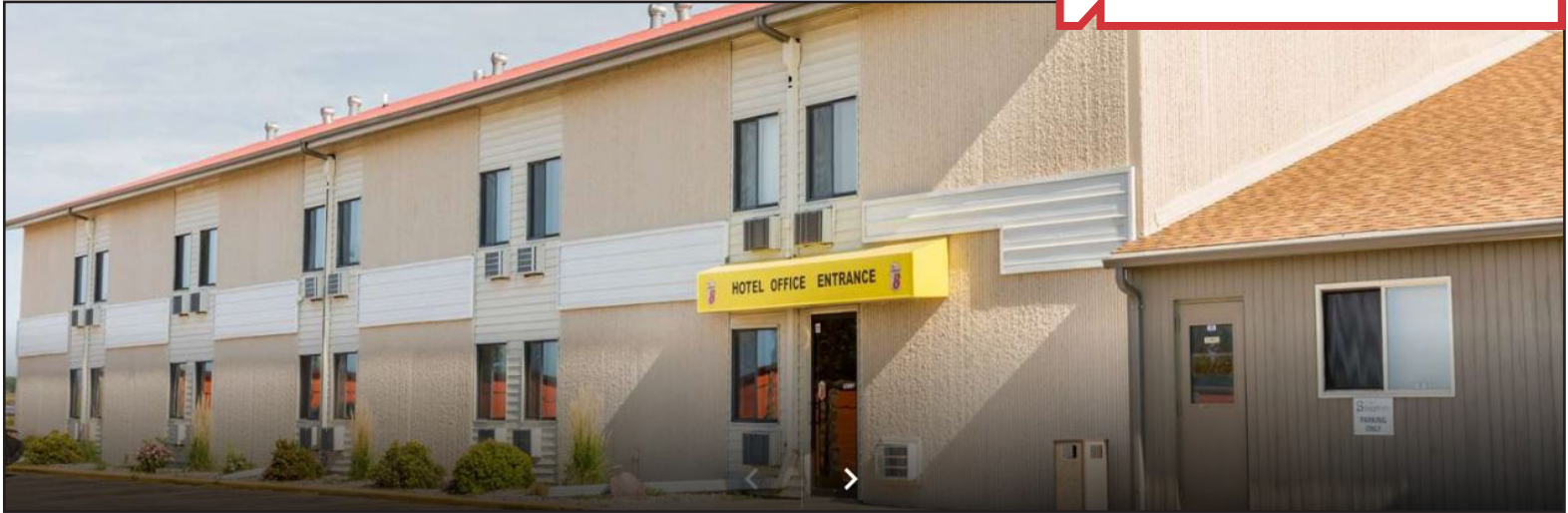
Senior Vice President

605 444 7117 direct

605 351 1218 mobile

dzomer@naisiouxfalls.com

For Sale
Hotel



For Sale
Hotel

