



PROPERTY HIGHLIGHTS

- As of 2014, Concord Township's population is 18,245 people. Since 2000, it has had a population growth of 46.76 percent.
- 1 mile average household income = \$146,685
- Located within this exciting new retail & residential growth trade area
- Ideal retail space with a unique opportunity for warehouse/office
- Retail: 1633 SF; Warehouse: Up to 12,000 SF

TRADE AREA DEMOGRAPHICS

	POPULATION	AVG. HH INCOME	DAYTIME EMPLOYEES
7 Minutes	42,087	\$100,890	18,896
15 Minutes	184,561	\$90,461	102,640
20 Minutes	304,073	\$84,721	155,486

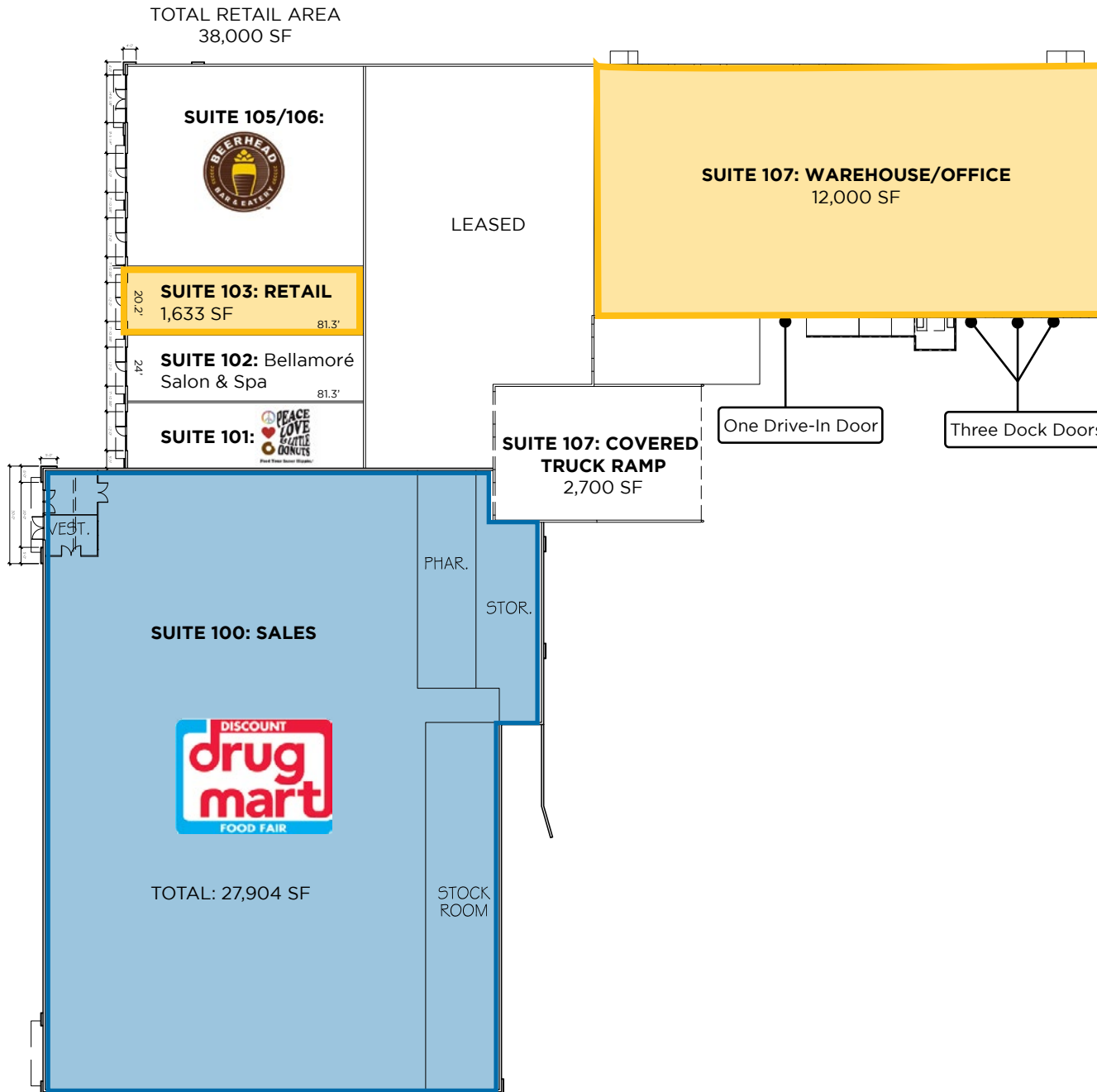
QUICK LINKS *(click to view)*

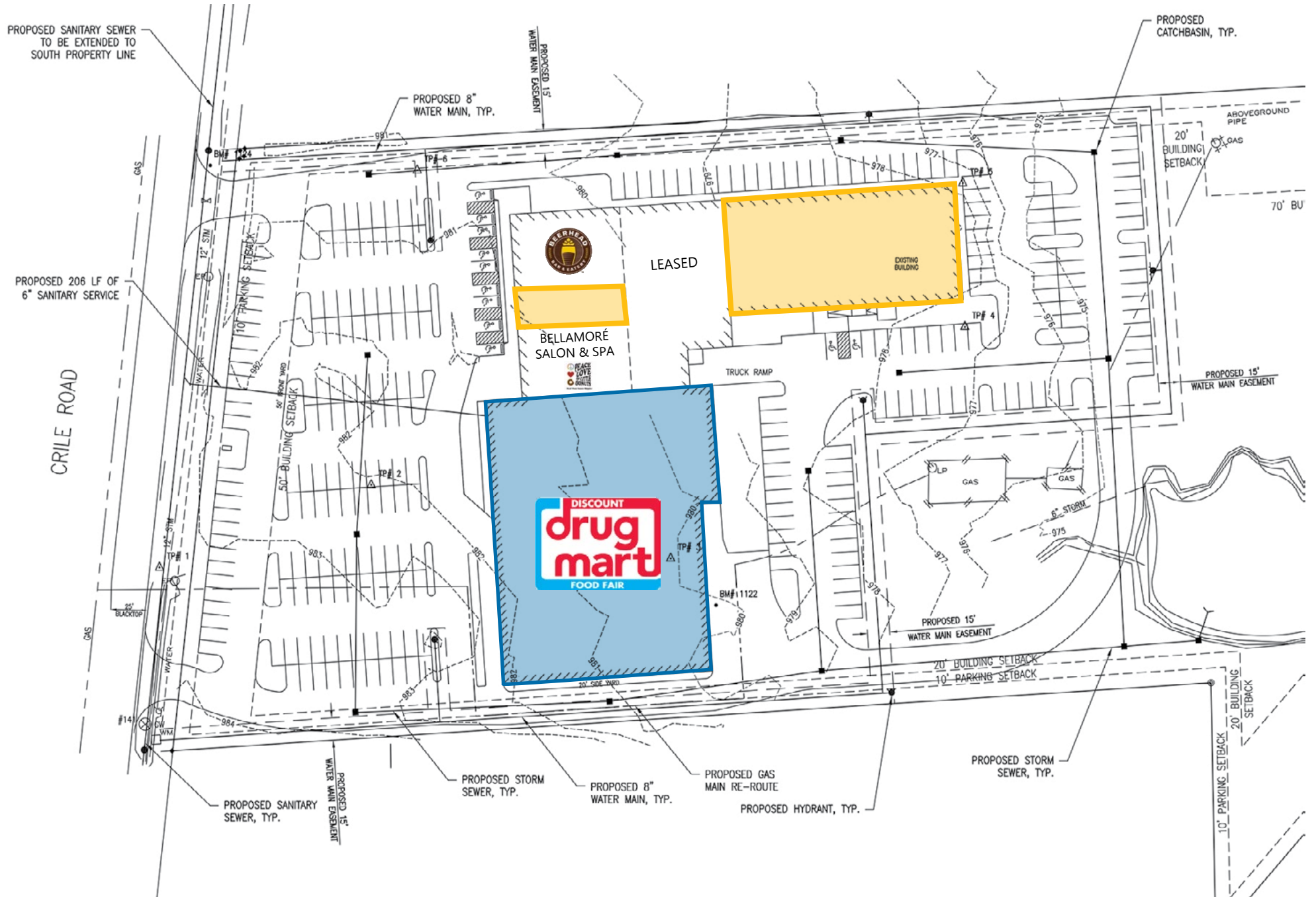
3401 Richmond Rd., Suite 200
Beachwood, OH 44122

www.passovgroup.com

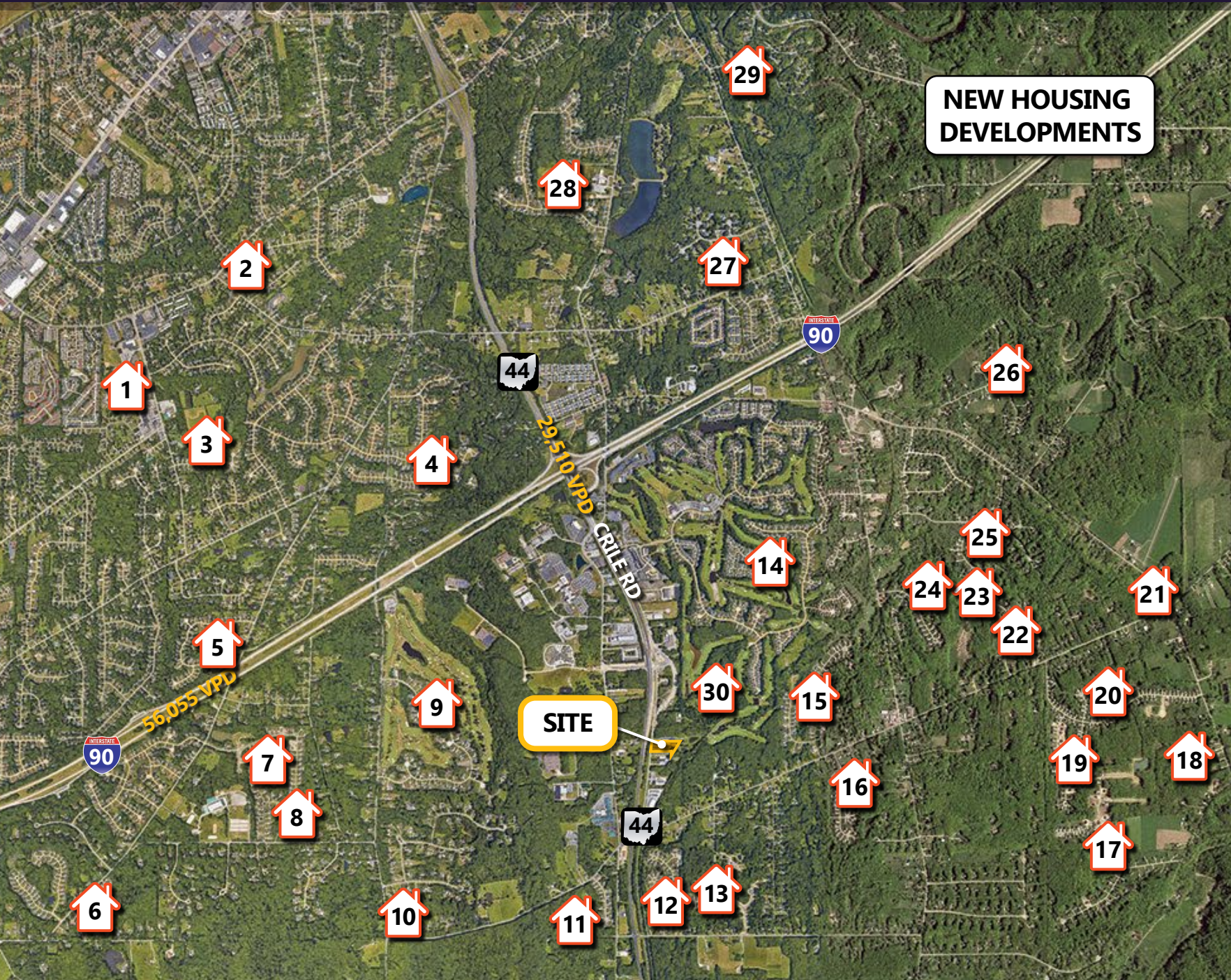
FOR MORE INFORMATION, CONTACT: 216.831.8100

David Stein / dstein@passovgroup.com









NEW HOUSING DEVELOPMENTS

#	Subdivision	Lot
1	Gabriel's Edge	58
2	Aria's Wayt	37
3	Brookfield	35
4	Hermitage Bluffs	72
5	Concord Farms	9
6	Little Mountain Preserve	14
7	Mountainside Farms	109
8	Mountaintop Estates	14
9	Little Mountain Country Club	80
10	Hermitage Woods	6
11	18th Century Village	25
12	Cambden Creek	56
13	Orchard Springs	48
14	Quail Hollow Ph 10	51
14	Quail Hollow Ph 11	48
14	Quail Hollow Ph 12	18
14	Quail Hollow Ph 5	13
14	Quail Hollow Ph 9	47
15	Nature Preserve N	97
16	Nature Preserve S	42
17	Concord Ridge	74
18	Concord Ridge Splits	10
19	Crossroads at Summerwood	25
20	Summerwood	125
21	Concord Glen Splits	10
22	Woodcrest	22
23	Stoneridge Estates	52
24	Noble Ridge	48
25	Cali Woods	56
26	Ledgewood Crossing	37
27	Bridgecreek Estates	13
28	Ellison Creek	120
29	Vie'en Provence	5
30	Hygrove Villas	50