

FOR LEASE



SouthPark Commerce Center Building 3

4401 Freidrich Ln.
Austin, Texas 78744



PROPERTY OVERVIEW

Space available	Suite 307 - 9,111 SF
Rate	Negotiable
Operating expenses	\$3.70 PSF Year EST.

Building features:

- Office / Lab Space
- 100% climate control
- Heavy power (3 phase; 480/277 Volt)
- 24' clear height
- Available on 1/1/2019*
- * Could be earlier



KBS

KBS.com

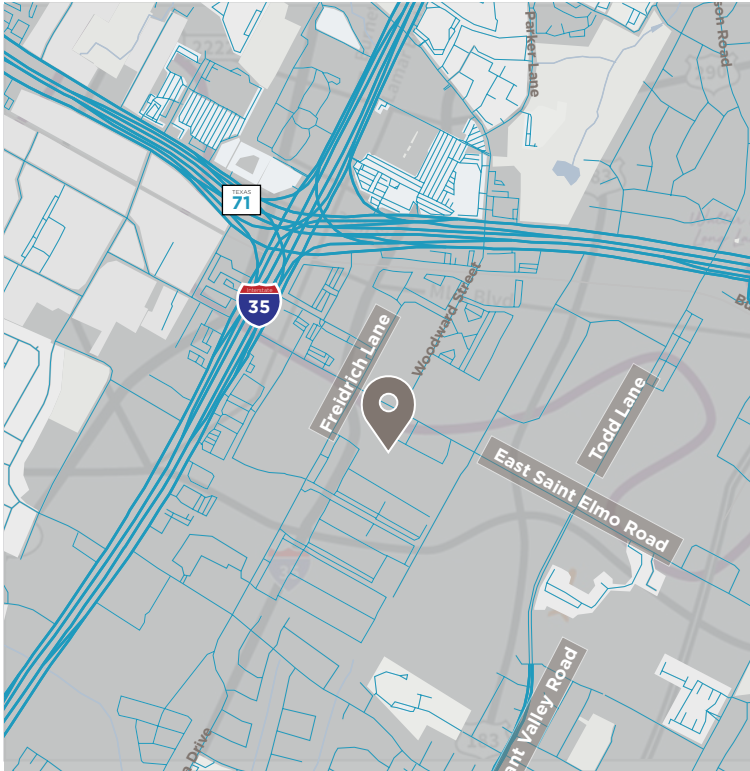
FOR MORE INFORMATION

Ace Schlameus
512.225.2709
Ace.Schlameus@am.jll.com



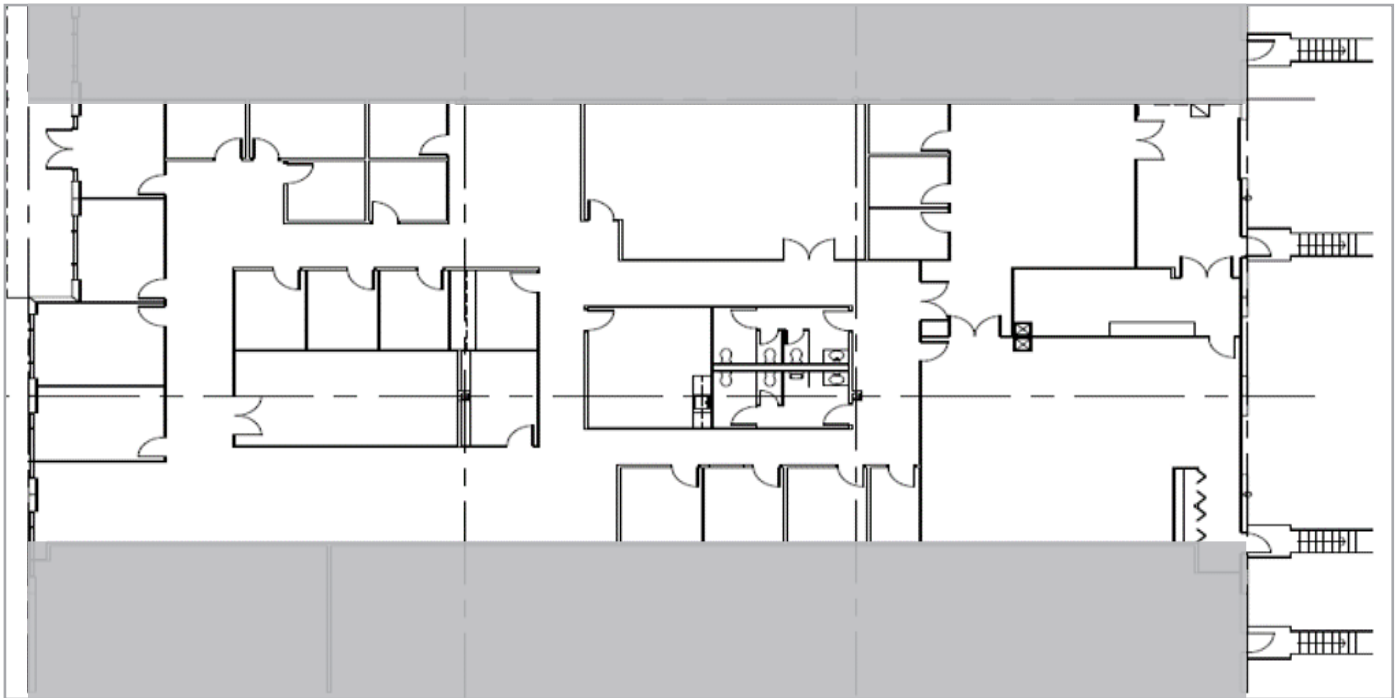
www.jll.com/austin

SUITE 307 | 9,111 SF
SOUTHPARK COMMERCE CENTER 3



Suite highlights

- Office/lab
- 100% climate control
- Heavy power (3 phase; 480/277 Volt)
- Dock high loading



KBS

KBS.com

FOR MORE INFORMATION

Ace Schlameus

512.225.2709

Ace.Schlameus@am.jll.com



www.jll.com/austin