

LAND FOR SALE

*Located on the
west side of
Route 13,
Smyrna, DE*

*\$300,000
per acre*

**R & R COMMERCIAL
REALTY**

46 S. State Street
Dover, DE 19901

Phone: 302-674-3400

Fax: 302-674-8479

E-mail: ccrod1@aol.com

Property Known As: McAllister

Location: West side of Route 13

Jurisdiction: Smyrna **County:** Kent **State:** DE

Type of Space: Land Only

Buildings: n/a

Acreage: 12.8241 +/- acres

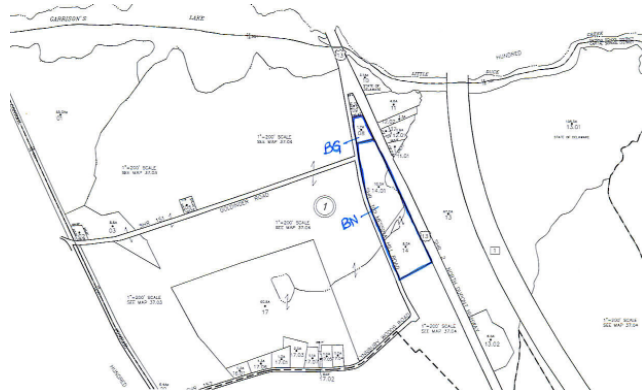
Zoning: BG & BN

Nearest Intersection: Route 13 & Messina Hill Road

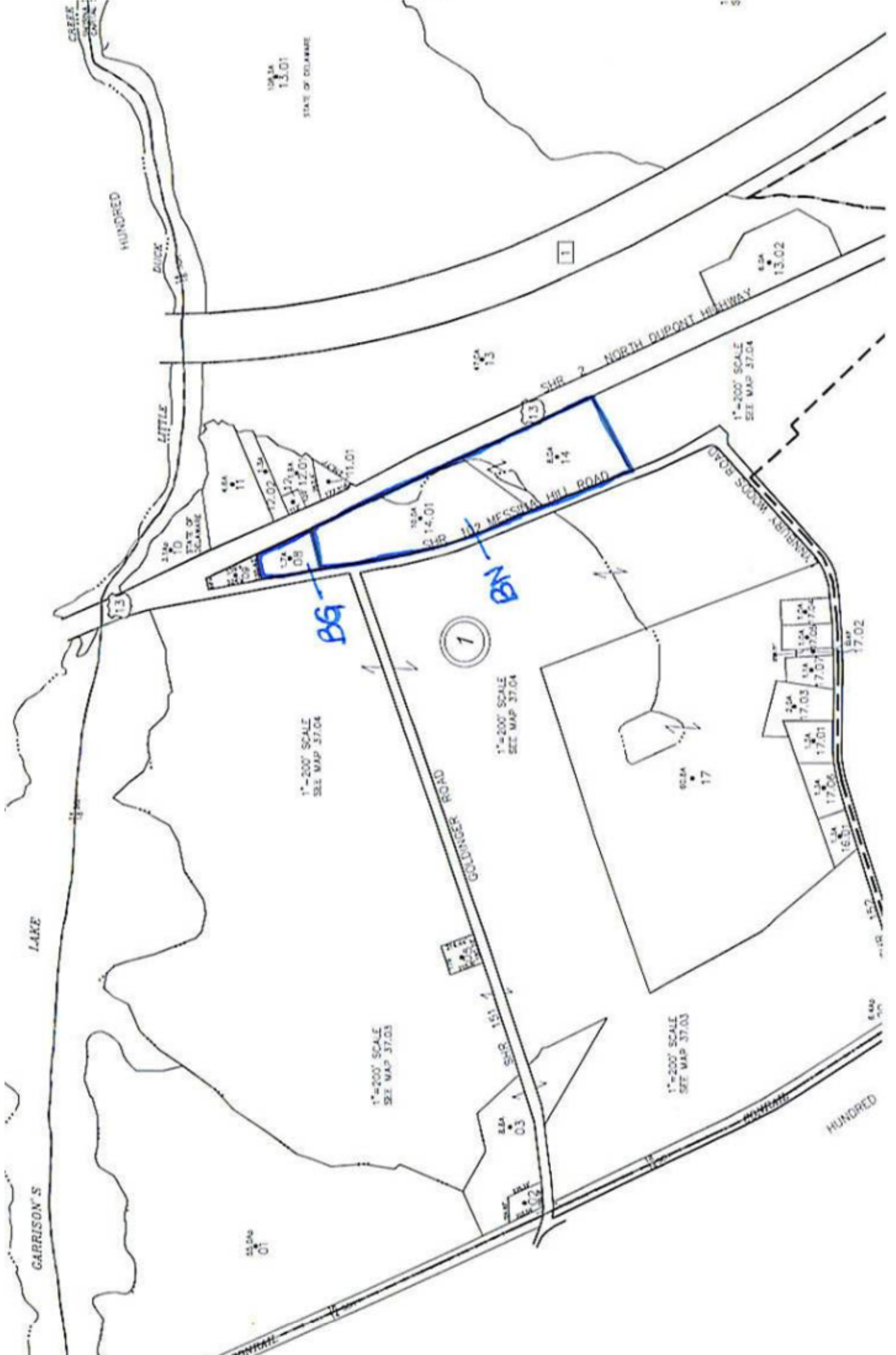
Character of Area: Commercial

Linkage Routes: Route 13

Additional Information: Road frontage on Route 13 & Messina Hill Road



All information contained herein is believed to be accurate, however was obtained from third parties and R & R Commercial Realty, Inc. Does not warrant as to the accuracy submitted subject to changes or modifications without notice. Listing Broker represents the Seller's interest.



Garrisons
Lake

Route 13

Route 1

