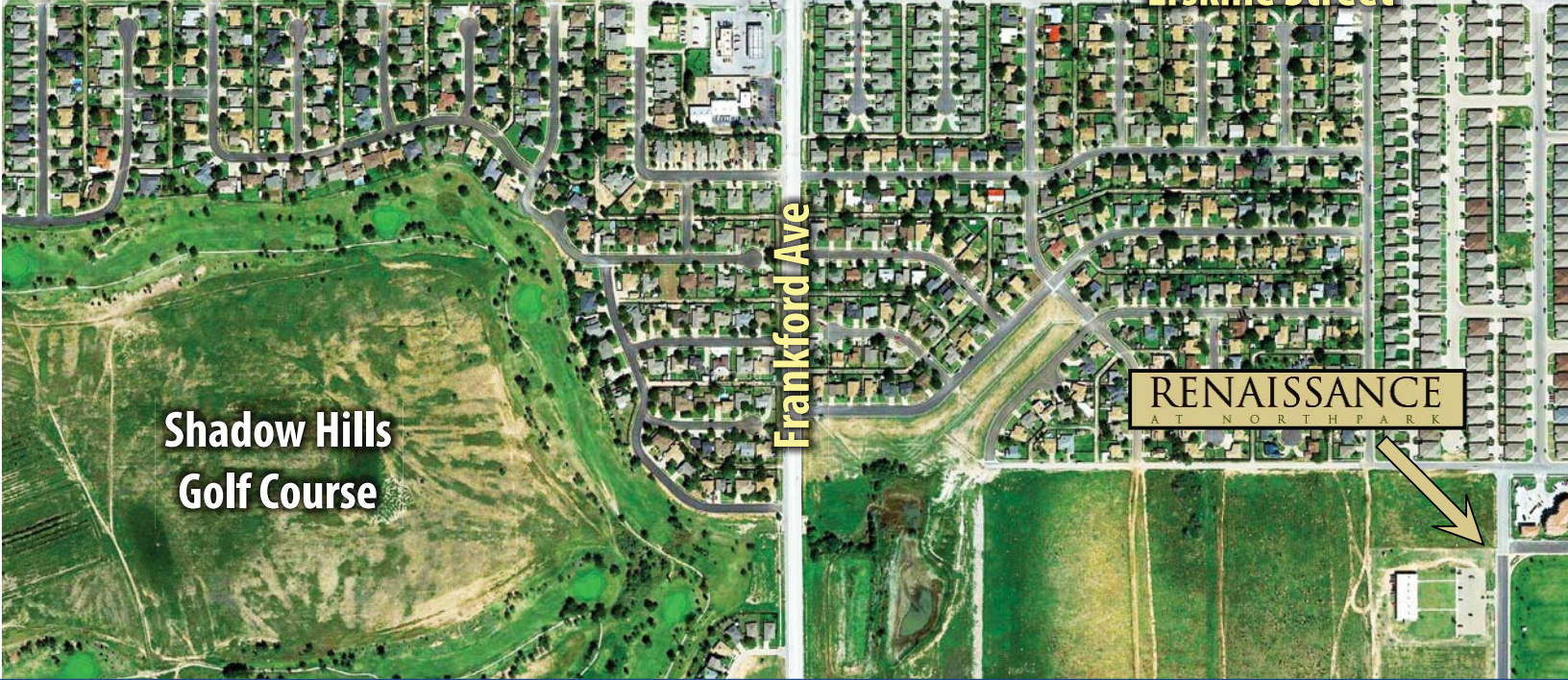
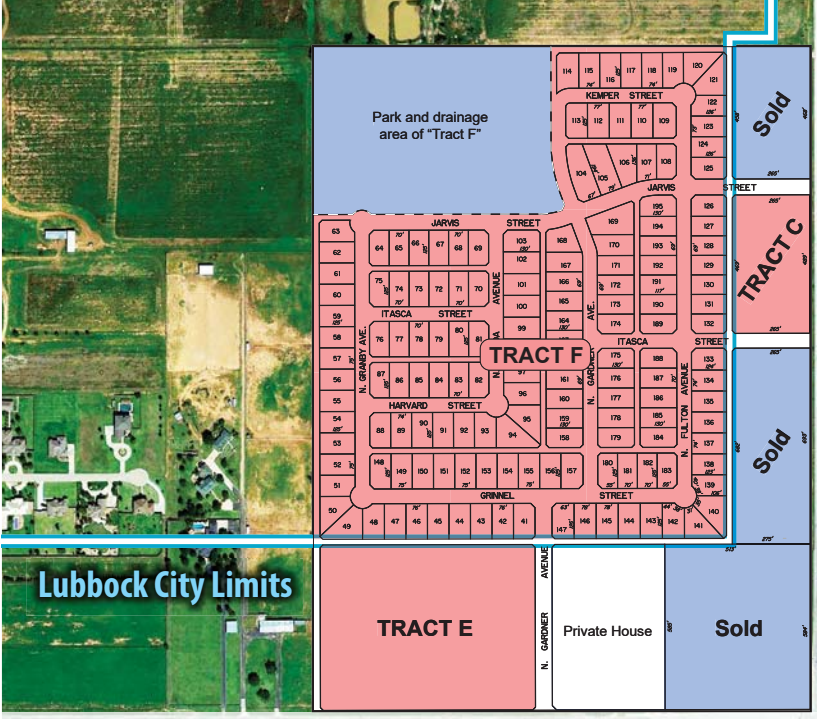


RICK CANUP, REALTORS®
Each office is Independently Owned and Operated

LAND DEVELOPMENT



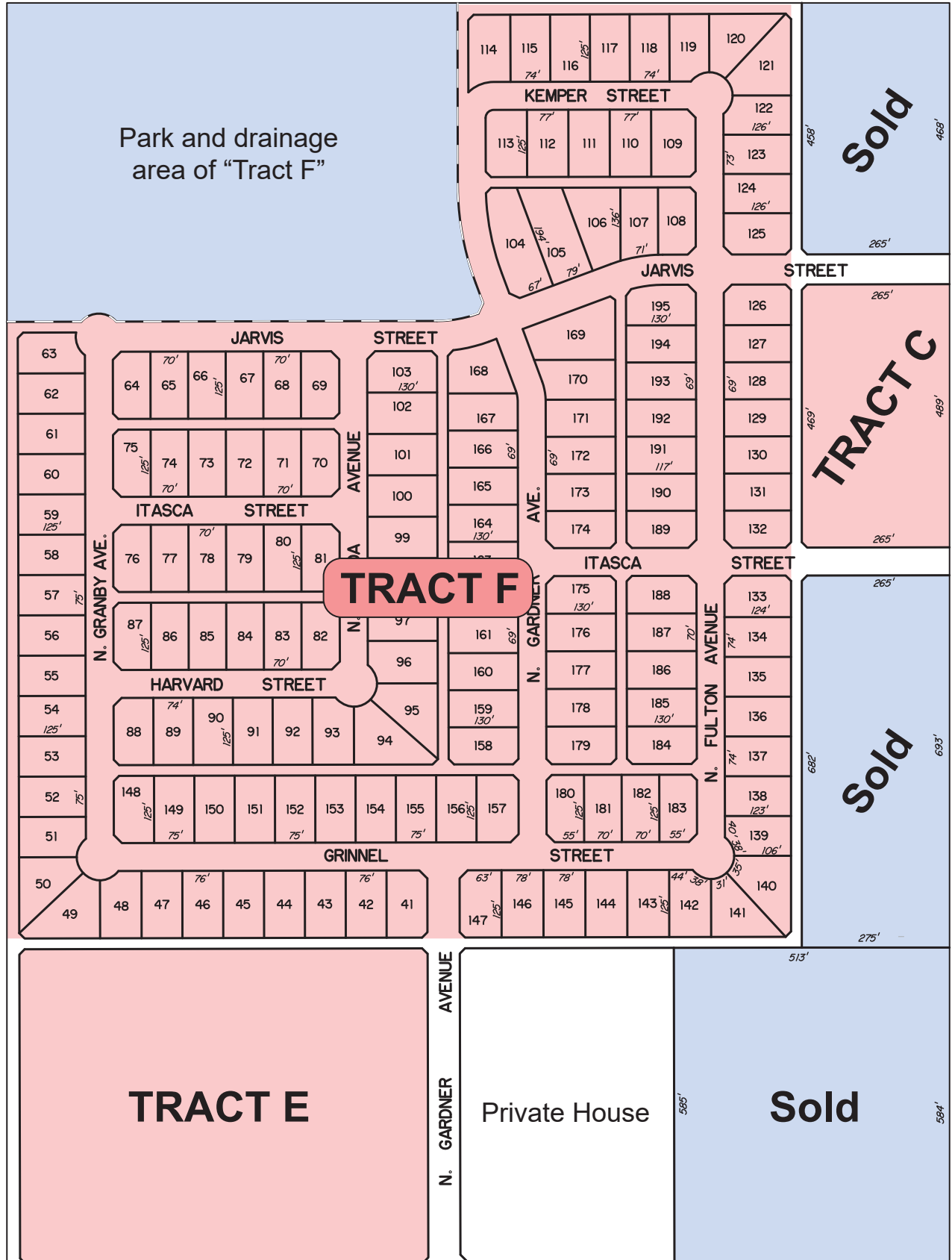
NWC OF FRANKFORD AVENUE & ERSKINE STREET

5802 Erskine Street
Lubbock, TX 79416

CBClubbock.com
CBCWorldwide.com

Coldwell Banker Commercial
Rick Canup, Realtors®

4924 S. Loop 289
Lubbock, TX 79414
806.793.0888





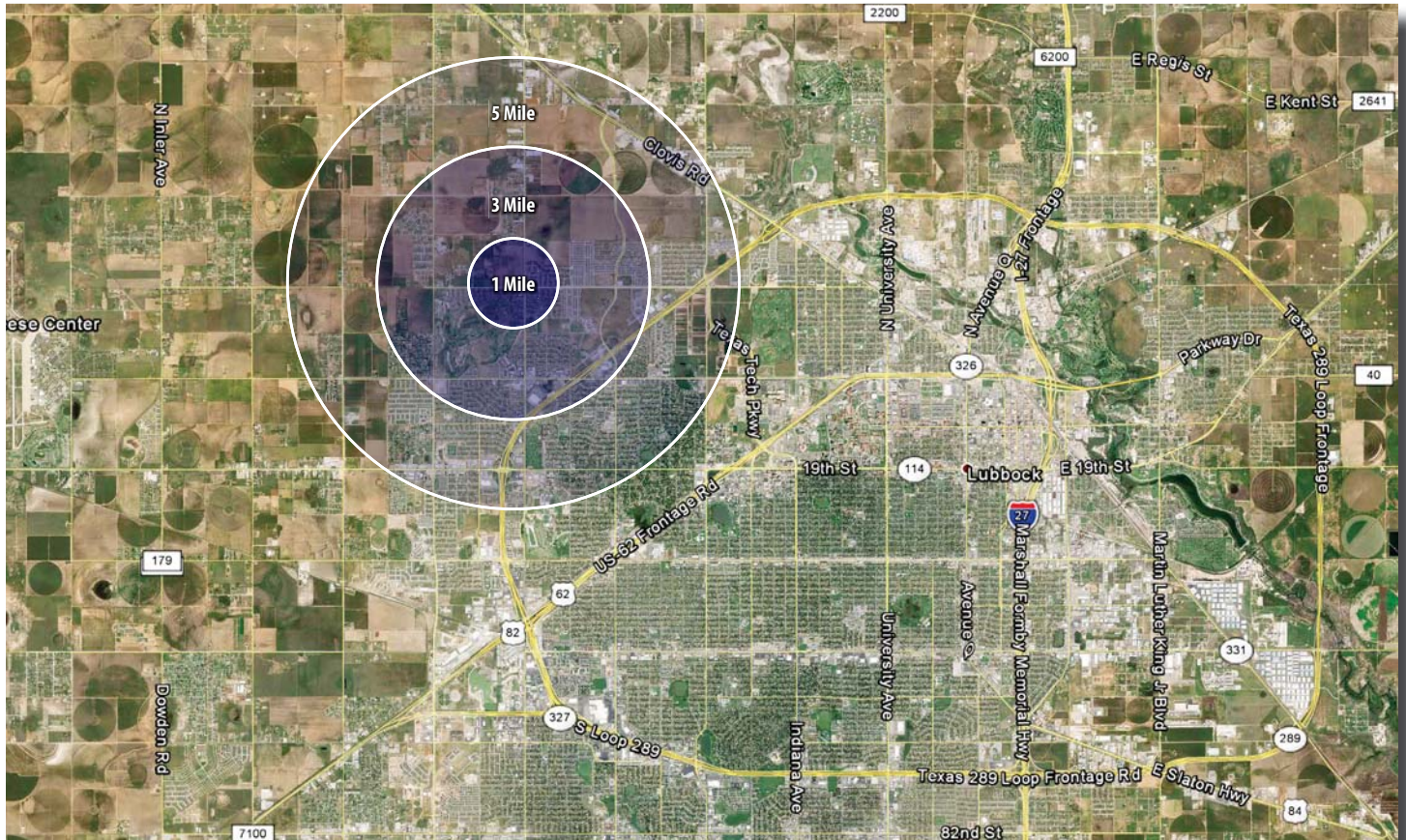
DESCRIPTION OF TRACTS

TRACT A:	SIZE:	SOLD
	PRICE:	
TRACT B:	SIZE:	SOLD
	PRICE:	
TRACT C:	SIZE:	2.96 acres - with 486 feet fronting Frankford Ave.
	PRICE:	\$4.00 per SF
TRACT D:	SIZE:	SOLD
	PRICE:	
TRACT E:	SIZE:	9.71 acres - with 755 feet fronting Erskine St.
	PRICE:	\$1.50 per SF
TRACT F:	SIZE:	53.5 acres
	PRICE:	\$15,000 per acre

The sizes of the tracts are **APPROXIMATE** with exact size to be determined by final survey.

LUBBOCK, TX DEMOGRAPHICS

CITY MAP



POPULATION	1 MILE	3 MILES	5 MILES
TOTAL POPULATION	2,080	38,757	89,878
MEDIAN AGE	35.3	27.9	27.7
MEDIAN AGE (MALE)	33.4	26.1	25.5
MEDIAN AGE (FEMALE)	37.3	27.5	28.1
HOUSEHOLDS & INCOME	1 MILE	3 MILES	5 MILES
TOTAL HOUSEHOLDS	847	14,623	33,120
# OF PERSONS PER HH	2.4	2.5	2.4
AVERAGE HH INCOME	\$67,322	\$53,355	\$52,536
AVERAGE HOUSE VALUE	\$171,886	\$103,494	\$93,735

For Additional
Information Contact:



Beau Tucker, CCIM
The Land Man
 806.784.3298 direct
 806.470.3944 cell
 BTucker@CBCWorldwide.com



RICK CANUP, REALTORS®
 Each office is Independently Owned and Operated

Coldwell Banker Commercial and the Coldwell Banker Commercial Logo are registered service marks licensed to Coldwell Banker Real Estate LLC. Each Office is Independently Owned and Operated.