

BERING/ZANKER BUSINESS PARK

2367 BERING DRIVE, SAN JOSE, CALIFORNIA | ±7,200 SF FOR LEASE



For more information, please contact:

Liam Martin
Associate
+1 408 436 3619
liam.martin@cushwake.com
LIC #02081625

Steve Pace
Executive Director
P +1 408 615 3419
steve.pace@cushwake.com
LIC #00817396

Dan Hollingsworth
Executive Managing Director
P +1 408 615 3431
dan.hollingsworth@cushwake.com
LIC #01117716



DOLLINGER PROPERTIES

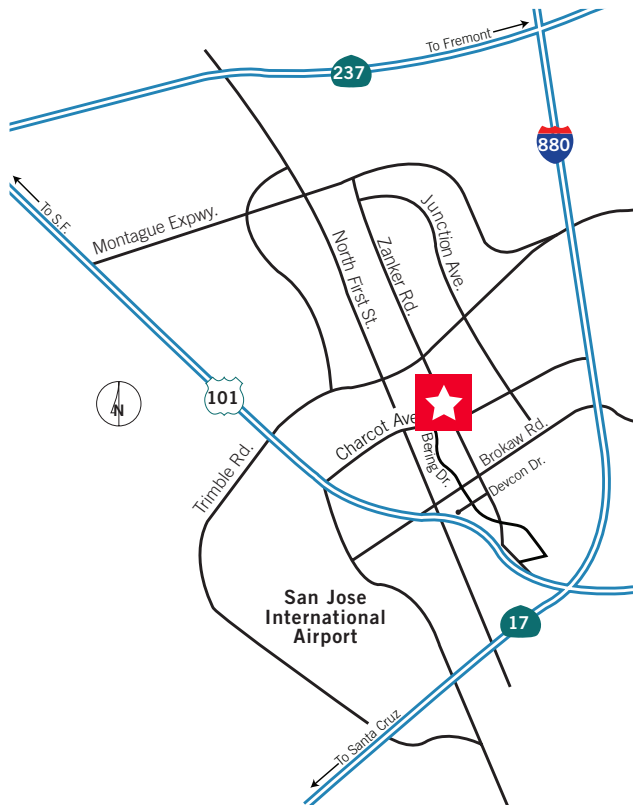


BERING/ZANKER BUSINESS PARK

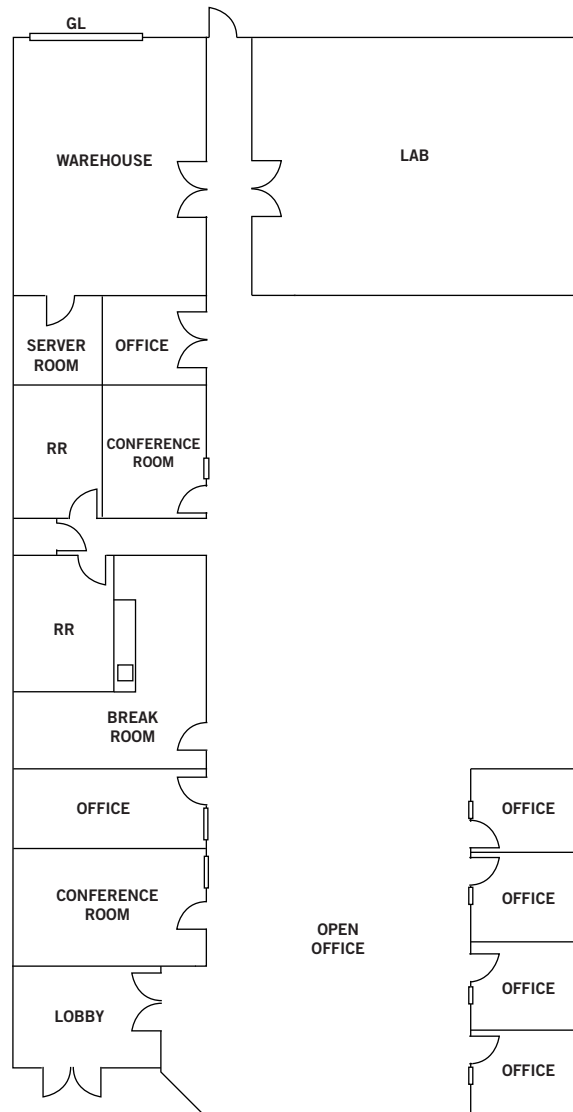
San Jose, California

Highlights

- Office/R&D
- High Image North San Jose location
- 4/1,000 Parking
- Easy Access to Highways 101 & 880
- Walk to Light Rail Station



Floor Plan



2367 BERING DRIVE, SAN JOSE ±7,200 SF

- **Power:**
400 Amps @ 480 Volts
- **100% HVAC**
- **Description**
Reception, perimeter privates,
break room, large conference room,
labs, server room, grade level loading

BERING/ZANKER BUSINESS PARK

San Jose, California

PHOTOS



BERING/ZANKER BUSINESS PARK

San Jose, California

Public Transit and Amenities

