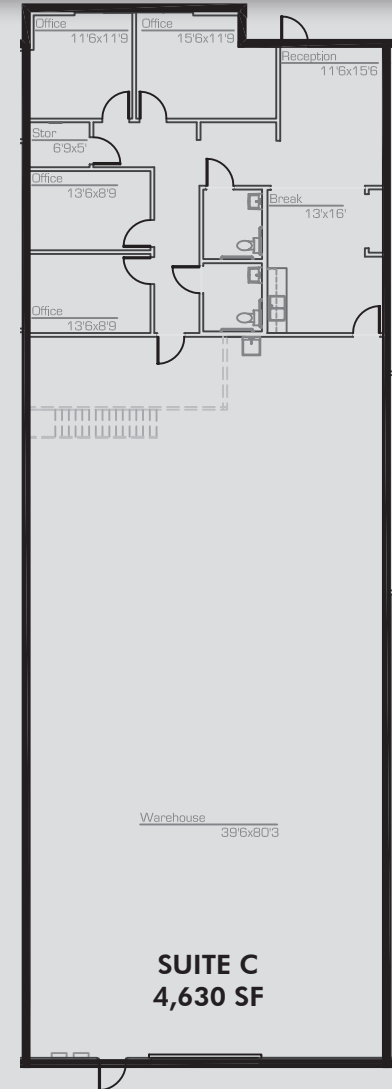


2401 W PHELPS RD
SUITE C: PHOENIX, AZ 85203

4,630 SF
INDUSTRIAL SPACE FOR SUBLEASE



Property Details

- ±4,630 SF
- 2 Acres
- Evap Warehouse
- 16' Clear Height
- 1 GLD; 12' x 14'
- Power: 120/208v, 200a, 3p
- Reception
- 4 Offices
- Conference Room
- Break Room
- Bull Pen
- 2 Restrooms

Sublease Rates (NNN):
02/19/18-07/01/18: \$2,546.50
01/01/18-06/30/19: \$2,622.90
07/01/19-06/30/20: \$2,701.50

SUITE C
4,630 SF

Andy Jaffe
 D: 480.214.1132
 M: 602.330.8777
 ajaffe@cpiaz.com

Rex Griswold
 M: 480.244.7222
 rgriswold@cpiaz.com

COMMERCIAL PROPERTIES INC.
 Locally Owned. Globally Connected. CFR PAC

TEMPE: 2323 W. University Drive, Tempe, AZ 85281 | 480.966.2301
 SCOTTSDALE: 7025 N. Scottsdale Rd., Suite 220, Scottsdale, AZ 85253 | www.cpiaz.com

The information contained herein has been obtained from various sources. We have no reason to doubt its accuracy; however, J & J Commercial Properties, Inc. has not verified such information and makes no guarantee, warranty or representation about such information. The prospective buyer or lessee should independently verify all dimensions, specifications, floor plans, and all information prior to the lease or purchase of the property. All offerings are subject to prior sale, lease, or withdrawal from the market without prior notice. Effective 03 12 18