

**\$2,100** monthly modified gross

**Unit B for Lease**

**Available**

**FOR LEASE**



**Property Features**

**443 W Morton Avenue  
Porterville, TULARE COUNTY, CA**

- Offices (4) available: see reverse side
  - office 4 could be used as a conference room or breakroom
- Fenced w/ 1 Handicap space & side parking
- Shared: gated parking, trash, & recycle
- Utilities: sewer, trash, & water included
- Past use: medical
- Zoning: PO-D



(see reverse side for more pictures & floor plan)

**Lisa May Anderson, GRI**  
REALTOR®  
Sales Associate  
DRE License # 01833976  
559-356-6177  
lisamay@whitlatch.net

# Available Unit B

Waiting area and  
Reception office

443 W Morton Ave

Porterville, TULARE COUNTY, CA

FOR LEASE \$2,100



# Available Unit B

Waiting area and  
Reception office

443 W Morton Ave

Porterville, TULARE COUNTY, CA

Entrance to waiting area



Reception area and hallway to offices



FOR LEASE \$2,100

**3 Offices w/ sink**

**443 W Morton Ave.  
Porterville, TULARE COUNTY, CA**

**FOR LEASE \$2,100**



**Available**



**1 Private office  
w/ private entrance in back**

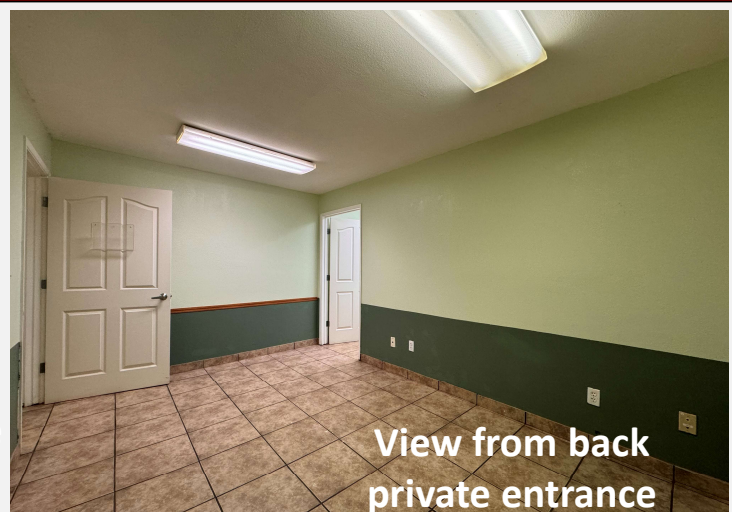
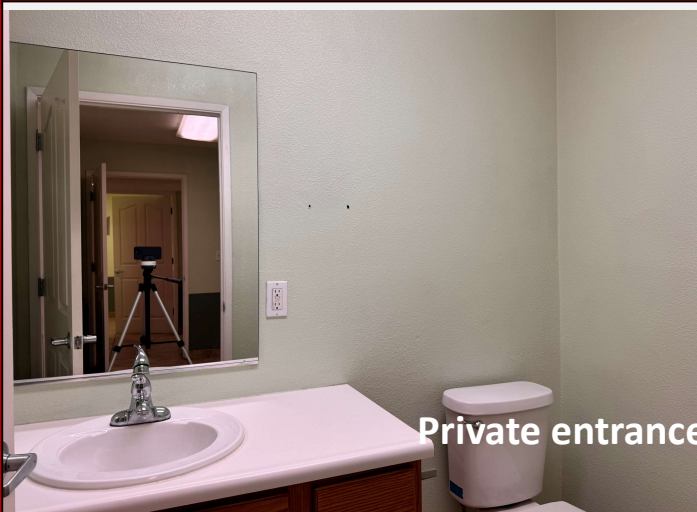
**Available**

**443 W Morton Ave.  
Porterville, TULARE COUNTY, CA**

**FOR LEASE \$2,100**



**Office 4 w/ private back entrance**



# FOR LEASE

443 West Morton Avenue, Porterville, CA, USA

West Morton Avenue

Automatic Gate

Handicap  
Parking here

For Lease  
\$2,100

SIZE AND DIMENSIONS ARE APPROXIMATE; ACTUAL MAY VARY.

LEASED

LEASED

443 W Morton Ave

-  = Available
-  = Pending
-  = LEASED



Side Parking here

For an interactive tour Scan with  
your smartphone camera



## Floor Plan 4 offices available

Lisa May Anderson, GRI  
REALTOR®

Sales Associate

DRE License # 01833976

559-356-6177

[lisamay@whitlatch.net](mailto:lisamay@whitlatch.net)

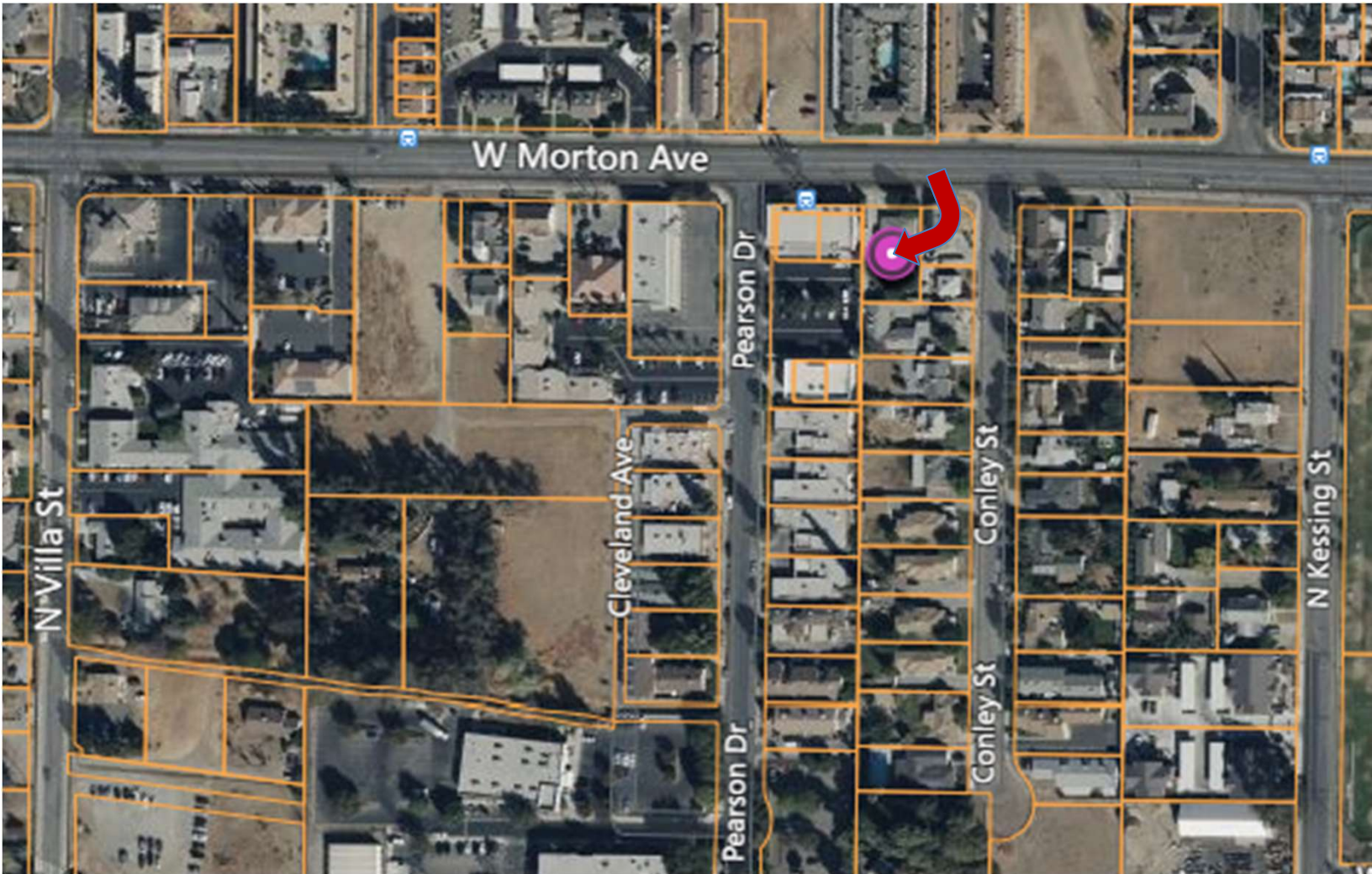


NO WARRANTY OR REPRESENTATION, EXPRESS OR IMPLIED, IS MADE AS TO THE ACCURACY OF THE INFORMATION CONTAINED HEREIN, AND THE SAME IS SUBMITTED SUBJECT TO ERRORS, OMISSIONS, CHANGE OF PRICE, RENTAL OR OTHER CONDITIONS, PRIOR SALE, LEASE OR FINANCING, OR WITHDRAWAL WITHOUT NOTICE, AND OF ANY SPECIAL LISTING CONDITIONS IMPOSED BY OUR PRINCIPALS NO WARRANTIES OR REPRESENTATIONS ARE MADE AS TO THE CONDITION OF THE PROPERTY OR ANY HAZARDS CONTAINED THEREIN ARE ANY TO BE IMPLIED.

# FOR LEASE

443 West Morton Avenue, Porterville, CA, USA

1 Private office w/ 3 offices w/ sink



For an interactive tour Scan with  
your smartphone camera



**Lisa May Anderson, GRI**  
REALTOR®

Sales Associate

DRE License # 01833976

559-356-6177

[lisamay@whitlatch.net](mailto:lisamay@whitlatch.net)

NO WARRANTY OR REPRESENTATION, EXPRESS OR IMPLIED, IS MADE AS TO THE ACCURACY OF THE INFORMATION CONTAINED HEREIN, AND THE SAME IS SUBMITTED SUBJECT TO ERRORS, OMISSIONS, CHANGE OF PRICE, RENTAL OR OTHER CONDITIONS, PRIOR SALE, LEASE OR FINANCING, OR WITHDRAWAL WITHOUT NOTICE, AND OF ANY SPECIAL LISTING CONDITIONS IMPOSED BY OUR PRINCIPALS NO WARRANTIES OR REPRESENTATIONS ARE MADE AS TO THE CONDITION OF THE PROPERTY OR ANY HAZARDS CONTAINED THEREIN ARE ANY TO BE IMPLIED.